

| | | | |
|--|------------------------|---|---|
| WAAS CH 72828 W02A | APP CRS 018° | Rwy Idg TDZE 1151 Apt Elev 1165 | 5000 1151 1165 |
|--|------------------------|---|---|

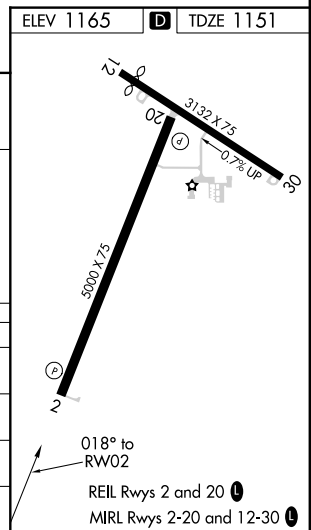
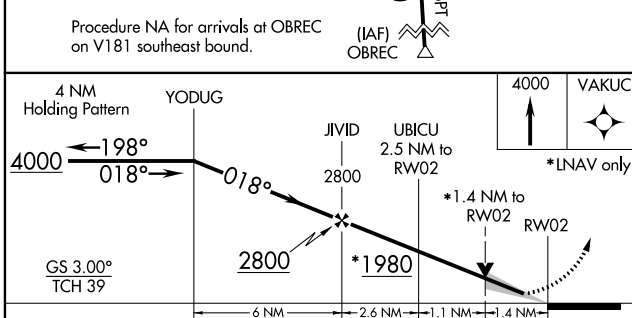
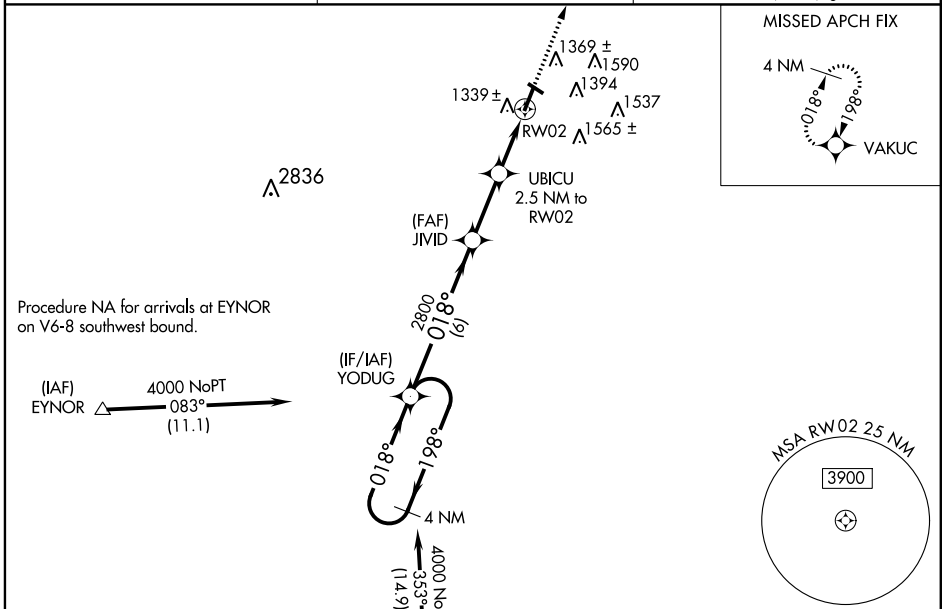
RNAV (GPS) RWY 2

ATLANTIC MUNI (AIO)

⚠ Baro-VNAV and VDP NA when using Harlan altimeter setting. For uncompensated Baro-VNAV systems, LNAV/VNAV NA below -17°C (2°F) or above 54°C (130°F). DME/DME RNP -0.3 NA. When local altimeter setting not received, use Harlan altimeter setting and increase all DA 49 feet and all MDA 60 feet, increase LPV visibility to 1 all Cats, increase LNAV/VNAV visibility to 1¾ all Cats, increase LNAV Cat C visibility to 1½, increase Circling Cat C visibility to 1¾. When VGSI inop, Circling Rwy 12 NA at night. Circling to Rwy 30 NA at night.

MISSED APPROACH:
Climb to 4000 direct VAKUC and hold.

| | | |
|--------------------------|--|---------------------------------|
| AWOS-3 127.825 | MINNEAPOLIS CENTER 119.6 290.4 | UNICOM 122.7 (CTAF) 0 |
|--------------------------|--|---------------------------------|



| CATEGORY | A | B | C | D |
|--------------|------------------------|---|----------------------|----|
| LPV DA | 1401-7/8 250 (300-7/8) | | | NA |
| LNAV/VNAV DA | 1514-1¼ 363 (400-1¼) | | | NA |
| LNAV MDA | 1620-1 469 (500-1) | | 1620-1¾ 469 (500-1¾) | NA |
| CIRCLING | 1720-1 555 (600-1) | | 1760-1½ 595 (600-1½) | NA |

NC-3, 26 JUN 2014 to 24 JUL 2014

NC-3, 26 JUN 2014 to 24 JUL 2014