

WAAS CH 82528 W20A	APP CRS 198°	Rwy Idg TDZE 1151 Apt Elev 1165	5000
--	------------------------	---	-------------

RNAV (GPS) RWY 20

ATLANTIC MUNI (AIO)

⚠ Baro-VNAV and VDP NA when using Harlan altimeter setting. For uncompensated Baro-VNAV systems, LNAV/VNAV NA below -17°C (2°F) or above 54°C (130°F). DME/DME RNP-0.3 NA. **⚠** When local altimeter setting not received, use Harlan altimeter setting and increase all DA 49 feet and all MDA 60 feet, increase LPV visibility to 1½ all Cats, increase LNAV/VNAV visibility to 2¼ all Cats, increase LNAV Cat C visibility to 1½, increase Circling Cat C visibility to 1¾. When VGSi inop, Circling Rwy 12 NA at night. Circling Rwy 30 NA at night.

MISSED APPROACH:
Climb to 4000 direct YODUG and hold.

AWOS-3
127.825

MINNEAPOLIS CENTER
119.6 290.4

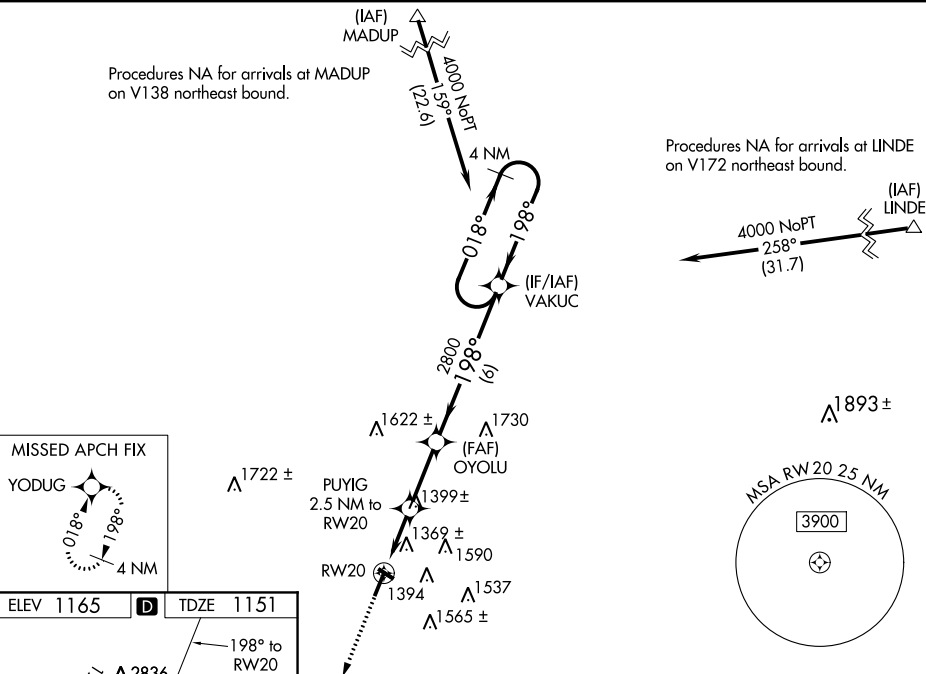
UNICOM
122.7 (CTAF) 0

Procedures NA for arrivals at MADUP on V138 northeast bound.

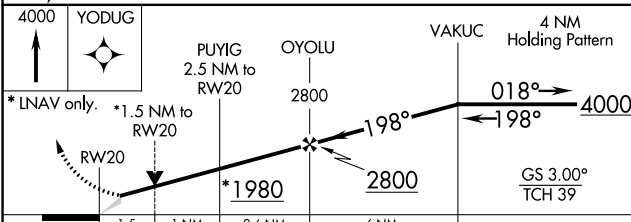
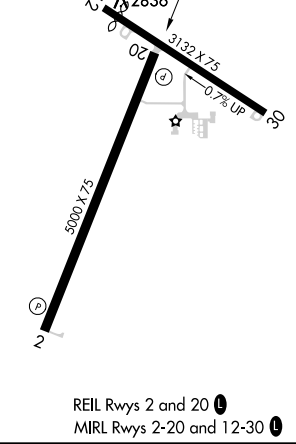
Procedures NA for arrivals at LINDE on V172 northeast bound.

NC-3, 26 JUN 2014 to 24 JUL 2014

NC-3, 26 JUN 2014 to 24 JUL 2014



ELEV 1165	D	TDZE 1151
-----------	----------	-----------



CATEGORY	A	B	C	D
LPV DA	1447-1	296 (300-1)		NA
LNAV/VNAV DA	1733-2	582 (600-2)		NA
LNAV MDA	1660-1	509 (500-1)	1660-1½ 509 (500-1½)	NA
CIRCLING	1720-1	555 (600-1)	1760-1½ 595 (600-1½)	NA