

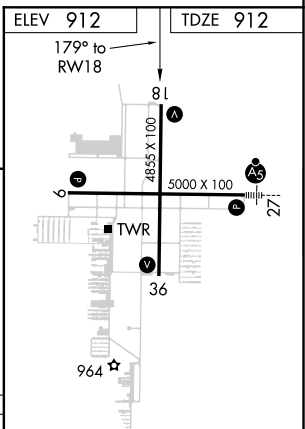
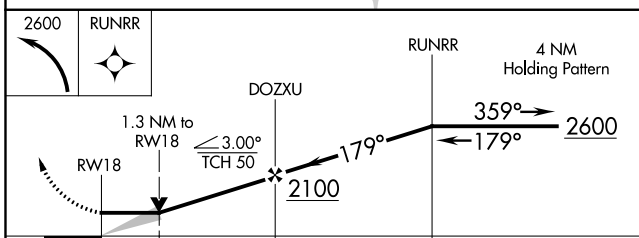
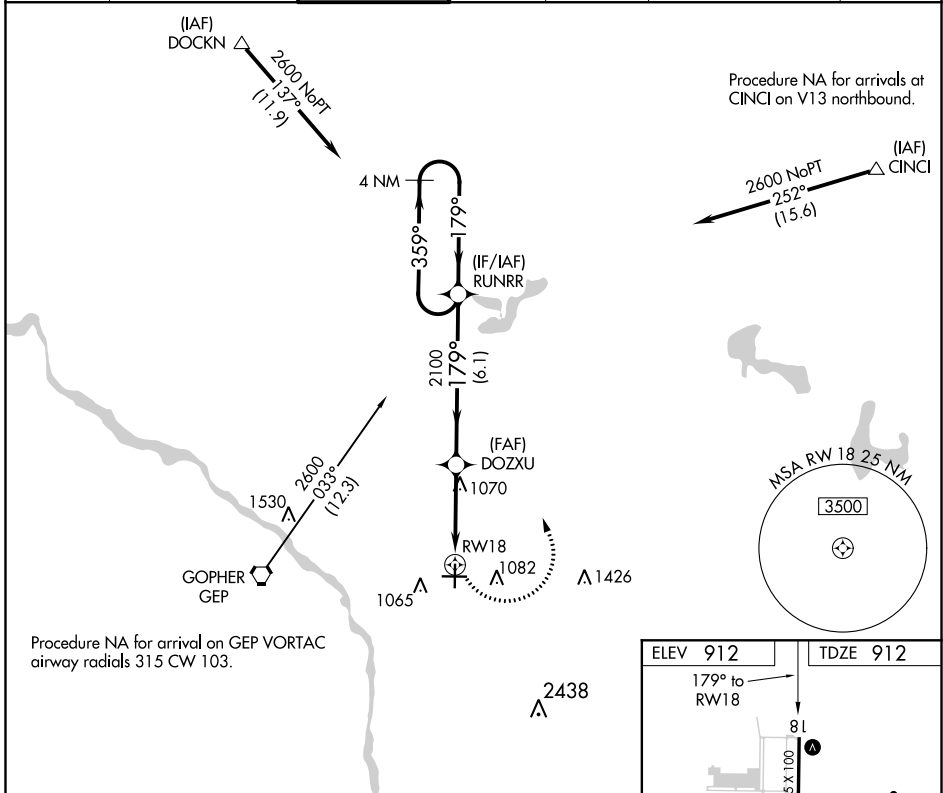
APP CRS	Rwy Idg	4855
179°	TDZE	912
	Apt Elev	912

RNAV (GPS) RWY 18

ANOKA COUNTY-BLAINE (JANES FIELD) (A.NE)

<p>▼ DME/DME RNP-0.3 NA.</p>			<p>MISSED APPROACH: Climbing left turn to 2600 direct RUNRR and hold.</p>			
-------------------------------------	--	--	---	--	--	--

ATIS	MINNEAPOLIS APP CON	ANOKA TOWER*	GND CON	CLNC DEL	MINNEAPOLIS CLNC DEL	UNICOM
120.625	126.5 335.65	132.4 (CTAF) 0	121.85	121.3	121.85 (When tower closed)	122.95



CATEGORY	A	B	C	D
LNNAV MDA	1380-1	468 (500-1)	1380-1 ³ / ₈ 468 (500-1 ³ / ₈)	1380-1 ¹ / ₂ 468 (500-1 ¹ / ₂)
C CIRCLING	1400-1	488 (500-1)	1460-1 ¹ / ₂ 548 (600-1 ¹ / ₂)	1580-2 668 (700-2)

HIRL Rwy 9-27 **0**

MIRL Rwy 18-36 **0**

REIL Rws 9, 18 and 36 **0**

NC-1, 25 FEB 2021 to 25 MAR 2021

NC-1, 25 FEB 2021 to 25 MAR 2021