

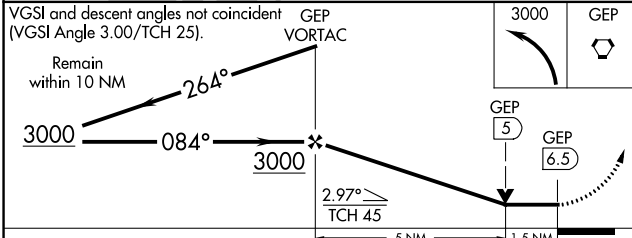
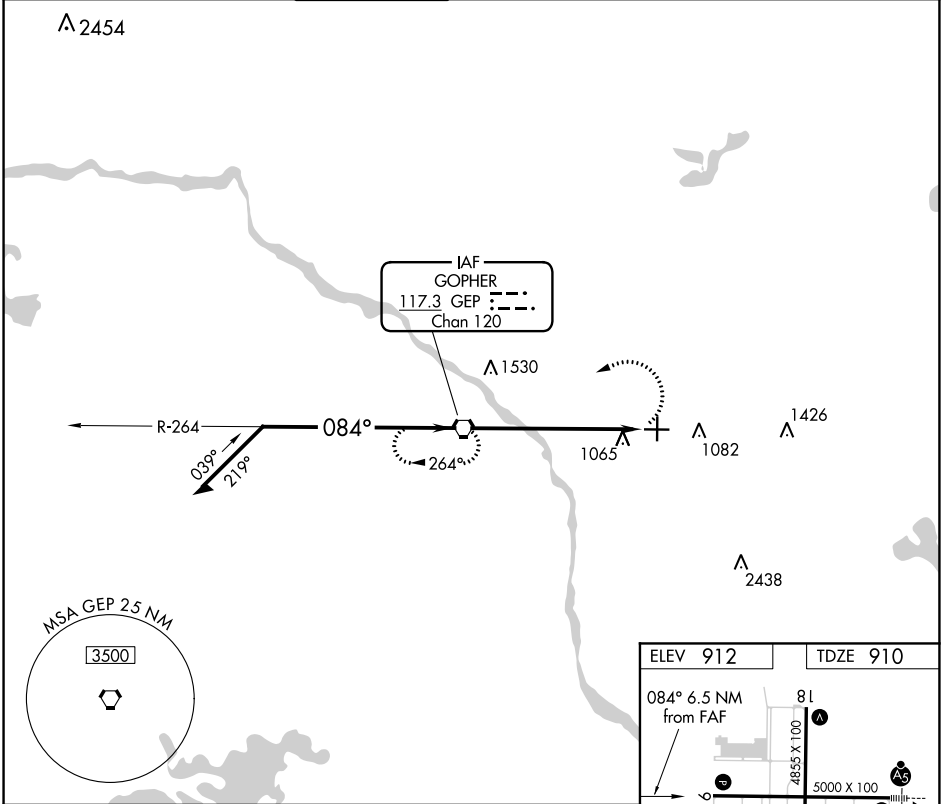
VORTAC GEP <b>117.3</b> Chan 120	APP CRS <b>084°</b>	Rwy Idg TDZE Apt Elev <b>5000</b> <b>910</b> <b>912</b>
--	------------------------	--

# VOR RWY 9

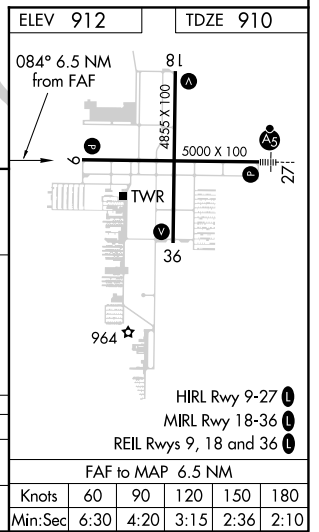
ANOKA COUNTY-BLAINE (JANES FIELD) (A.N.E.)

MISSED APPROACH: Climbing left turn to 3000 direct GEP VORTAC and hold.

ATIS <b>120.625</b>	MINNEAPOLIS APP CON <b>126.5 335.65</b>	ANOKA TOWER* <b>132.4</b> (CTAF) <b>0</b>	GND CON <b>121.85</b>	CLNC DEL <b>121.3</b>	MINNEAPOLIS CLNC DEL <b>121.85</b> (When tower closed)	UNICOM <b>122.95</b>
------------------------	--	--	--------------------------	--------------------------	--	-------------------------



CATEGORY	A	B	C	D
	1400-1 490 (500-1)		1400-1 3/8 490 (500-1 3/8)	1400-1 1/2 490 (500-1 1/2)
S-9			1460-1 1/2 548 (600-1 1/2)	1580-2 668 (700-2)
CIRCLING	1400-1 488 (500-1)			



NC-1, 25 FEB 2021 to 25 MAR 2021

NC-1, 25 FEB 2021 to 25 MAR 2021