

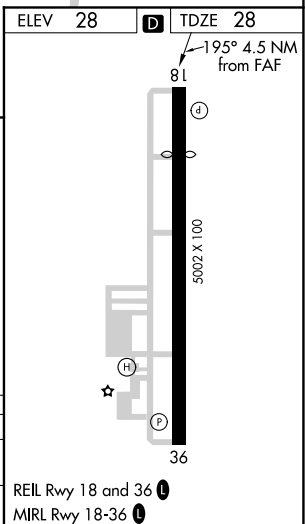
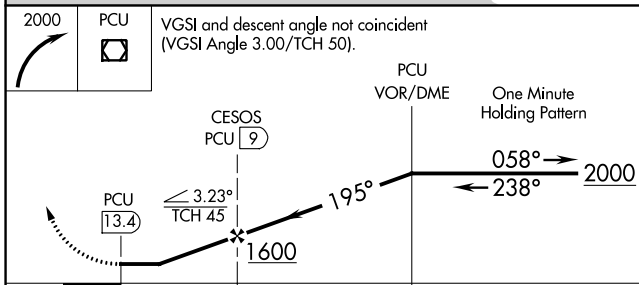
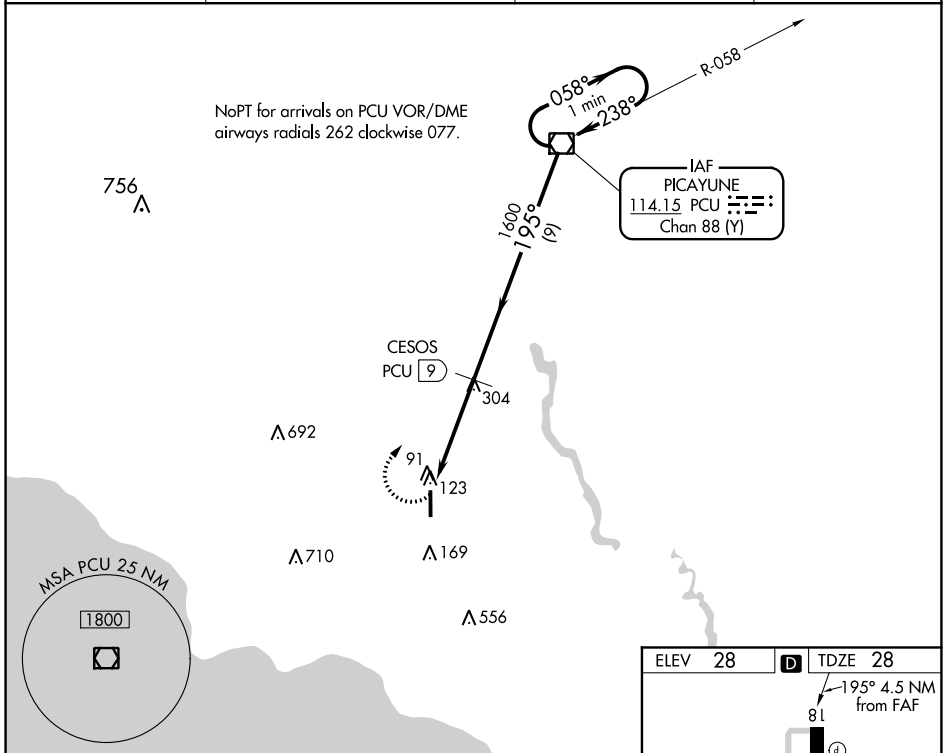
VOR/DME PCU 114.15 Chan 88 (Y)	APP CRS 195°	Rwy Idg 4058 TDZE 28 Apt Elev 28
--	------------------------	---

VOR/DME RWY 18

SLIDELL (ASD)

▼ ▲ NA	Night landing Rwy 18 NA. Helicopter visibility reduction below 1 SM NA.	MISSED APPROACH: Climbing right turn to 2000 direct PCU VOR/DME and hold.
-------------------------	--	---

ASOS 132.475	NEW ORLEANS APP CON 133.15 290.3	UNICOM 122.8 (CTAF) 0	GCO 135.075
------------------------	--	--	-----------------------



CATEGORY	A	B	C	D
S-18	460-1	432 (500-1)	460-1½ 432 (500-1½)	NA
CIRCLING	480-1	452 (500-1)	480-1½ 452 (500-1½)	NA

SC-4, 25 FEB 2021 to 25 MAR 2021

SC-4, 25 FEB 2021 to 25 MAR 2021