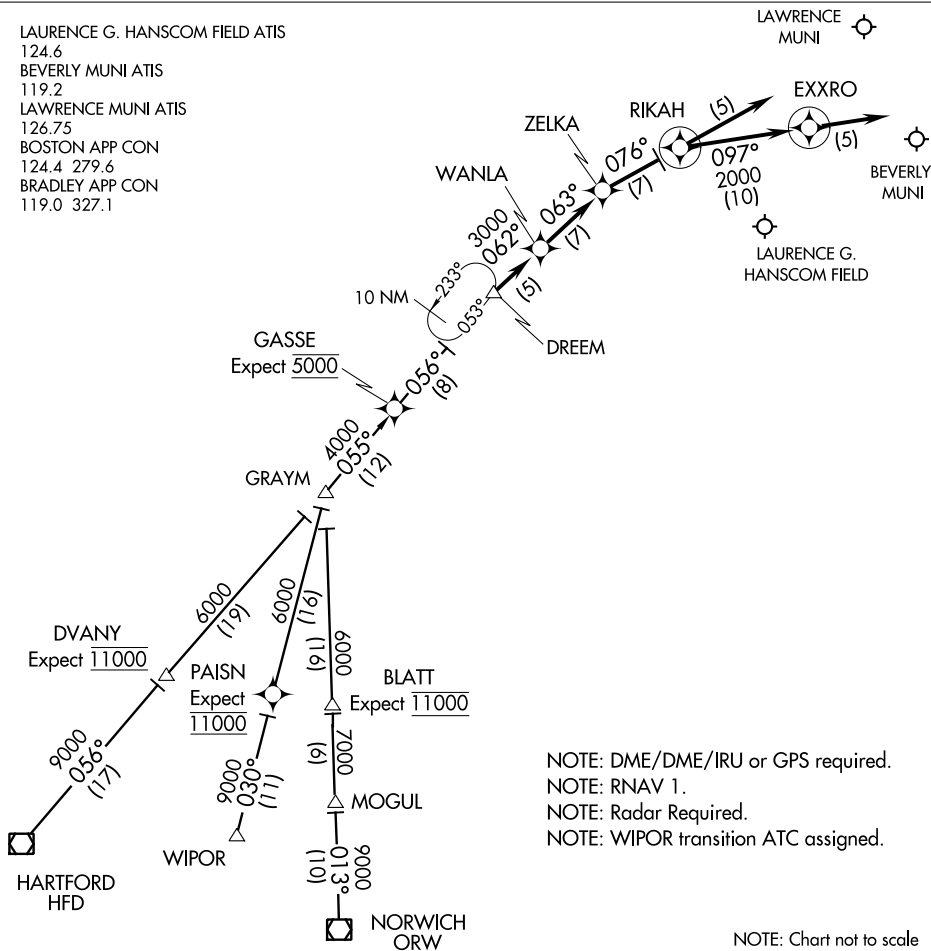


DREEM ONE ARRIVAL (RNAV)

BEDFORD, MASSACHUSETTS

LAURENCE G. HANSCOM FIELD ATIS
 124.6
 BEVERLY MUNI ATIS
 119.2
 LAWRENCE MUNI ATIS
 126.75
 BOSTON APP CON
 124.4 279.6
 BRADLEY APP CON
 119.0 327.1



NOTE: DME/DME/IRU or GPS required.
 NOTE: RNAV 1.
 NOTE: Radar Required.
 NOTE: WIPOR transition ATC assigned.

NOTE: Chart not to scale

HARTFORD TRANSITION (HFD.DREEM1):
NORWICH TRANSITION (ORW.DREEM1):

WIPOR TRANSITION (WIPOR.DREEM1):

LANDING BVY ALL RWYS and LANDING BED RWYS 23 & 29: From DREEM on track 062° to WANLA, then on track 063° to ZELKA, then on track 076° to RIKAH, then on track 097° to EXXRO, then on track 097°. Expect radar vectors to destination airport and final approach course.

LANDING BED RWY 11: From DREEM on track 062° to WANLA. Expect RNAV approach.

LANDING BED RWY 11: From DREEM on track 062° to WANLA, then on track 063° to ZELKA. Expect ILS approach.

LANDING LWM ALL RWYS: From DREEM on track 062° to WANLA, then on track 063° to ZELKA, then on track 076° to RIKAH, then on track 076°, expect radar vectors to final approach course.

NE-1, 26 JUN 2014 to 24 JUL 2014

NE-1, 26 JUN 2014 to 24 JUL 2014