


NDB SKR 251	APP CRS 297°	Rwy Idg 7011 THRE 123 Apt Elev 132
-----------------------	------------------------	--

NDB RWY 29

LAURENCE G. HANSCOM FIELD (BED)


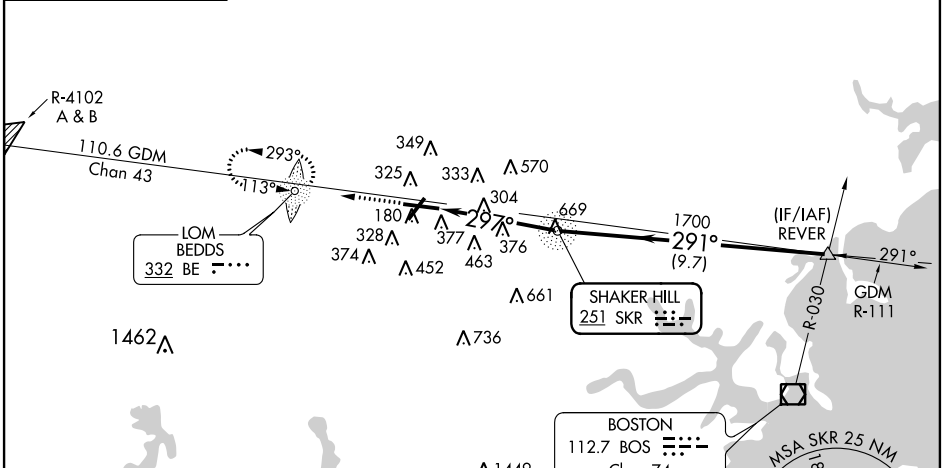
⚠ When local altimeter setting not received, use Boston altimeter setting and increase all MDA 60 feet; increase S-29 Cat C and D visibility ¼ mile, increase Circling Cat C visibility ⅛ mile and Cat D visibility ¼ mile. For inop MALSRS, increase S-23 Cat D visibility to 1⅞. For inop MALSRS when using Boston altimeter setting, increase S-23 Cat D visibility to 2.

⚠ NA

MALSRS
 MISSED APPROACH: Climb to 2000 direct BEDDS LOM and hold.

ATIS 124.6	BOSTON APP CON 124.4 279.6	HANSCOM TOWER* 118.5 (CTAF) 0 257.2	GND CON 121.7	CLNC DEL 121.85	UNICOM 122.95
----------------------	--------------------------------------	---	-------------------------	---------------------------	-------------------------

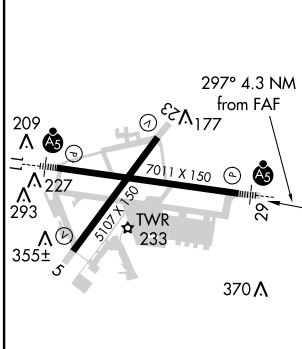
ALTERNATE MISSED APCH FIX
SHAKER HILL SKR 251

NE-1, 26 JUN 2014 to 24 JUL 2014

NE-1, 26 JUN 2014 to 24 JUL 2014

ELEV 132	D	THRE 123
----------	----------	----------

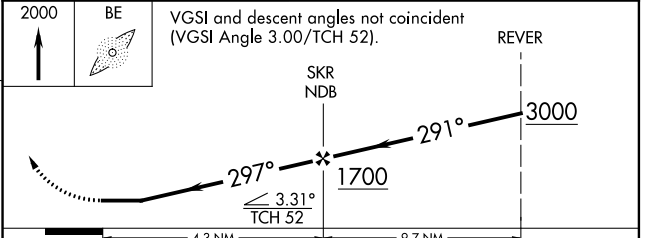


MIRL Rwy 5-23
HIRL Rwy 11-29
REIL Rwys 5 and 23

FAF to MAP 4.3 NM

Knots	60	90	120	150	180
Min:Sec	4:18	2:52	2:09	1:43	1:26

2000 BE
 VGSI and descent angles not coincident (VGSI Angle 3.00/TCH 52).



CATEGORY	A	B	C	D
S-29	780-¾ 657 (700-¾)		780-1⅜ 657 (700-1⅜)	
CIRCLING	780-1 648 (700-1)		780-1⅞ 648 (700-1⅞)	780-2 648 (700-2)