


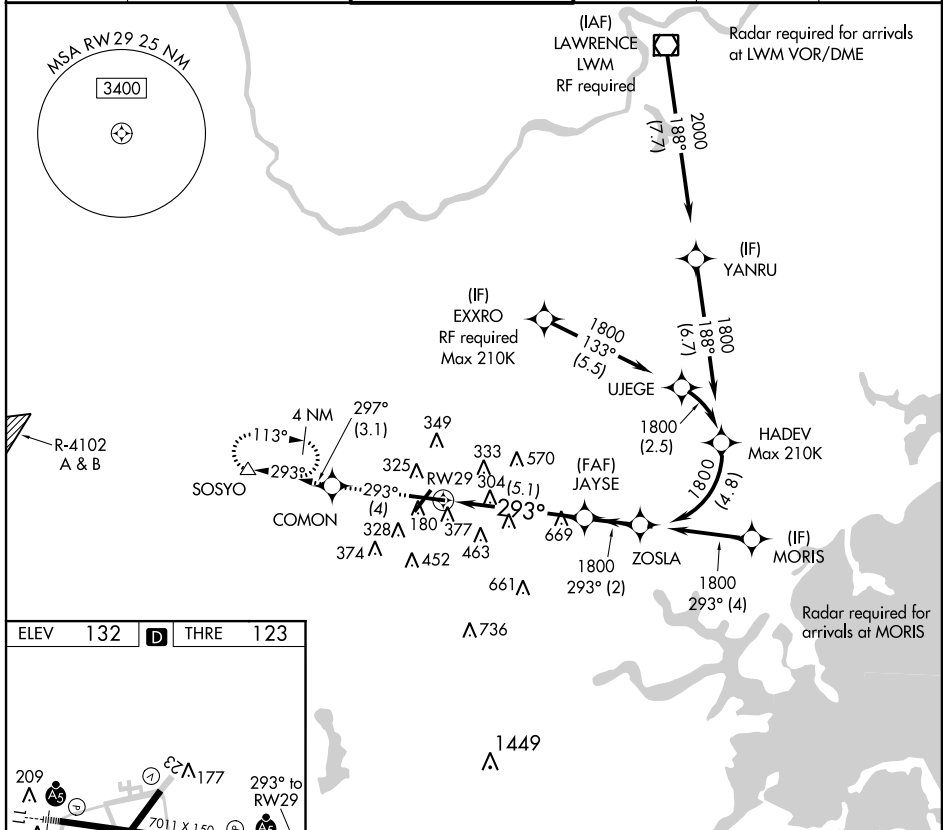
APP CRS	Rwy Idg	<b>7011</b>
<b>293°</b>	THRE	<b>123</b>
	Apt Elev	<b>132</b>

# RNAV (RNP) Y RWY 29

LAURENCE G. HANSCOM FIELD (BED)

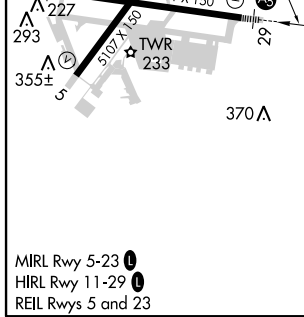
<p><b>▽</b> For uncompensated Baro-VNAV systems, procedure NA below -16°C (4°F) or above 54°C (130°F). GPS required. For inop MALSR, increase RNP 0.30 all Cats visibility to 1¾.</p>	<p>MALSR</p> 	<p>MISSED APPROACH: Climb to 2000 on track 293° to COMON and on track 297° to SOSYO and hold.</p>

ATIS	BOSTON APP CON	HANSCOM TOWER*	GND CON	CLNC DEL	UNICOM
<b>124.6</b>	<b>124.4 279.6</b>	<b>118.5 (CTAF) 0 257.2</b>	<b>121.7</b>	<b>121.85</b>	<b>122.95</b>



NE-1, 26 JUN 2014 to 24 JUL 2014

NE-1, 26 JUN 2014 to 24 JUL 2014



2000	tr 293°	COMON	tr 297°	SOSYO	See planview for multiple IF locations.	
				JAYSE	ZOSLA	
				1800	1800	
				293°	1800	
				1800		
					GP 3.00° TCH 55	
				5.1 NM	2 NM	
CATEGORY	A		B		C	D
RNP 0.30 DA	646-1¼		523 (600-1¼)			