

WAAS CH 87000 W11A	APP CRS 113°	Rwy Idg THRE Apt Elev	7011 132 132
--	------------------------	-----------------------------	---

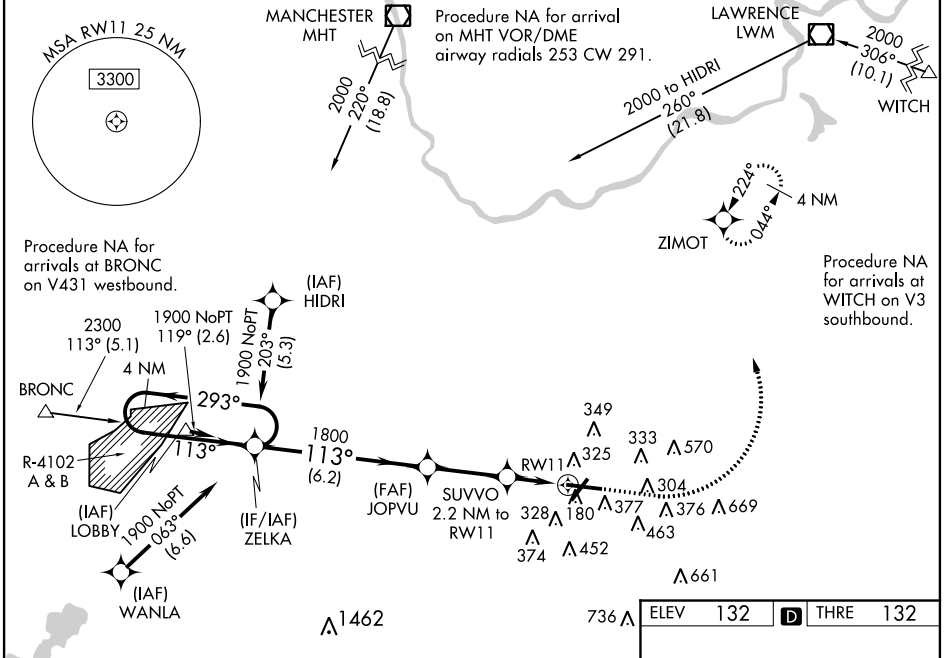
RNAV (GPS) Z RWY 11

LAURENCE G. HANSCOM FIELD (BED)

⚠ For uncompensated Baro-VNAV systems, LNAV/VNAV NA below -16°C (4°F) or above 54°C (130°F). DME/DME RNP-0.3 NA. When local altimeter setting not received, use Boston altimeter setting and increase all DA 49 feet and all MDA 60 feet; increase LNAV/VNAV all Cats visibility to RVR 4500, increase LNAV and Circling Cats C and D visibility ¼ mile. Baro-VNAV and VDP NA with Boston altimeter setting. Inop table does not apply to LPV all Cats.

MALSR MISSED APPROACH: Climb to 1000 then climbing left turn to 2000 direct ZIMOT and hold.

ATIS 124.6	BOSTON APP CON 124.4 279.6	HANSCOM TOWER* 118.5 (CTAF) 257.2	GND CON 121.7	CLNC DEL 121.85	UNICOM 122.95
----------------------	--------------------------------------	---	-------------------------	---------------------------	-------------------------



NE-1, 26 JUN 2014 to 24 JUL 2014

NE-1, 26 JUN 2014 to 24 JUL 2014

VGSI and RNAV glidepath not coincident (VGSI Angle 3.00/TCH 67).

4 NM Holding Pattern

ZELKA

JOPVU

SUVVO 2.2 NM to RW11

*LNAV only

113° to RW11

209, 293, 355±, 5197 X 150, 7011 X 150, TWR 233, 370 A

	ELEV 132	THRE 132
--	----------	----------

CATEGORY	A	B	C	D
LPV DA		382/40	250 (300-¾)	
LNAV/VNAV DA		474/40	342 (400-¾)	
LNAV MDA	660/24	528 (600-½)	660/55	528 (600-1¼)
CIRCLING	720-1	588 (600-1)	720-1½ 588 (600-1½)	780-2 648 (700-2)

MIRL Rwy 5-23
HIRL Rwy 11-29
REIL Rwy 5 and 23