

VOR/DME LWM	APP CRS	Rwy Idg	<b>5107</b>
<b>112.5</b>	<b>223°</b>	THRE	<b>128</b>
Chan <b>72</b>		Apt Elev	<b>132</b>

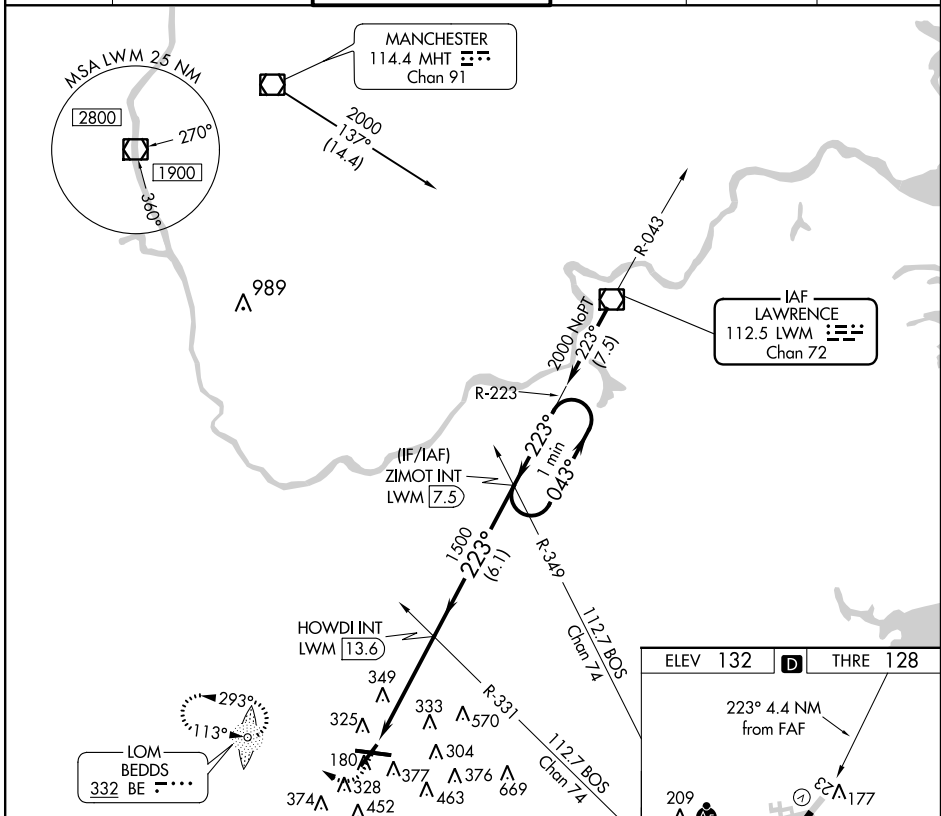
# VOR RWY 23

LAURENCE G. HANSCOM FIELD (BED)

**▼** ADF Required. Visibility reduction by helicopters NA. When VGSI inop, Straight-in/  
**▲** Circling Rwy 23 procedure NA at night. When local altimeter setting not received,  
 use Boston altimeter setting and increase all MDA 60 feet; increase S-23 Cats C  
 and D and Circling Cat C visibility 1/8 mile and Circling Cat D visibility 1/4 mile.

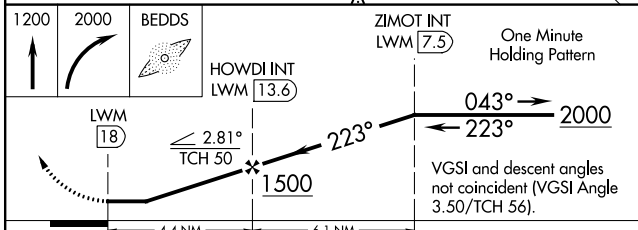
**MISSED APPROACH:** Climb to 1200 then climbing right turn to 2000 direct BEDDS LOM and hold.

ATIS <b>124.6</b>	BOSTON APP CON <b>124.4 279.6</b>	HANSCOM TOWER * <b>118.5 (CTAF) 0 257.2</b>	GND CON <b>121.7</b>	CLNC DEL <b>121.85</b>	UNICOM <b>122.95</b>
----------------------	--------------------------------------	--	-------------------------	---------------------------	-------------------------



NE-1, 26 JUN 2014 to 24 JUL 2014

NE-1, 26 JUN 2014 to 24 JUL 2014



ELEV 132	THRE 128
223° 4.4 NM from FAF	
MIRL Rwy 5-23	
HIRL Rwy 11-29	
REIL Rwys 5 and 23	
FAF to MAP 4.4 NM	
Knots	60 90 120 150 180
Min:Sec	4:24 2:56 2:12 1:46 1:28

CATEGORY	A	B	C	D
S-23	740-1	612 (700-1)	740-1 3/4	612 (700-1 3/4)
CIRCLING	740-1	608 (700-1)	740-1 3/4	780-2
			608 (700-1 3/4)	648 (700-2)