

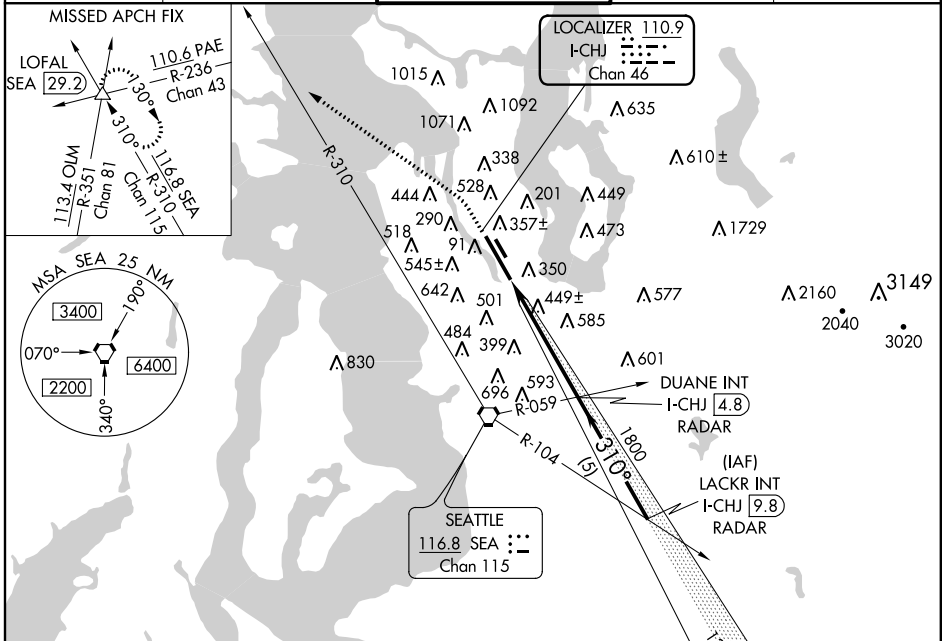
LOC/DME I-CHJ 110.9 Chan 46	APP CRS 310°	Rwy Idg 9120 TDZE 21 Apt Elev 21
--	------------------------	---

ILS or LOC RWY 31L

BOEING FIELD/KING COUNTY INTL (BFI)

⚠ MISSED APPROACH: Climb to 700 then climbing left turn to 6000 via heading 285° and SEA R-310 to LOFAL Int/SEA 29.2 DME and hold.

ATIS 127.75	SEATTLE APP CON 119.2 284.7	BOEING TOWER 120.6 257.8	GND CON 121.9	CLNC DEL 132.4
-----------------------	---------------------------------------	------------------------------------	-------------------------	--------------------------

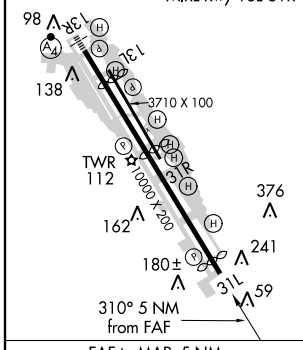


NW-1, 26 JUN 2014 to 24 JUL 2014

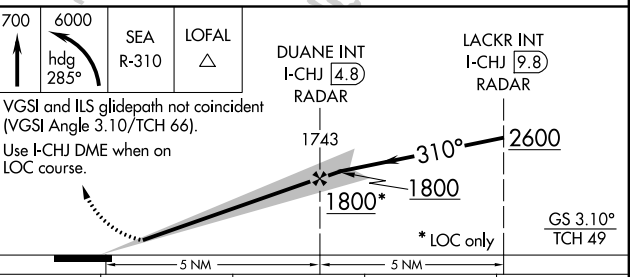
NW-1, 26 JUN 2014 to 24 JUL 2014

ELEV 21	D TDZE 21
---------	------------------

REIL Rwy 13L, 31L and 31R
HIRL Rwy 13R-31L
MIRL Rwy 13L-31R



RADAR REQUIRED



Knots	60	90	120	150	180
Min:Sec	5:00	3:20	2:30	2:00	1:40

CATEGORY	A	B	C	D
S-ILS 31L	428-1½ 407 (500-1½)			
S-LOC 31L	700-1	679 (700-1)	700-2 679 (700-2)	700-2¼ 679 (700-2¼)
CIRCLING	780-1¼ 759 (800-1¼)	840-1¼ 819 (900-1¼)	860-2½ 839 (900-2½)	960-3 939 (1000-3)