

LOC/DME I-BFI 110.9 Chan 46	APP CRS 130°	Rwy Idg TDZE Apt Elev	9120 18 21
------------------------------------------	------------------------	-----------------------------	---------------------------------------

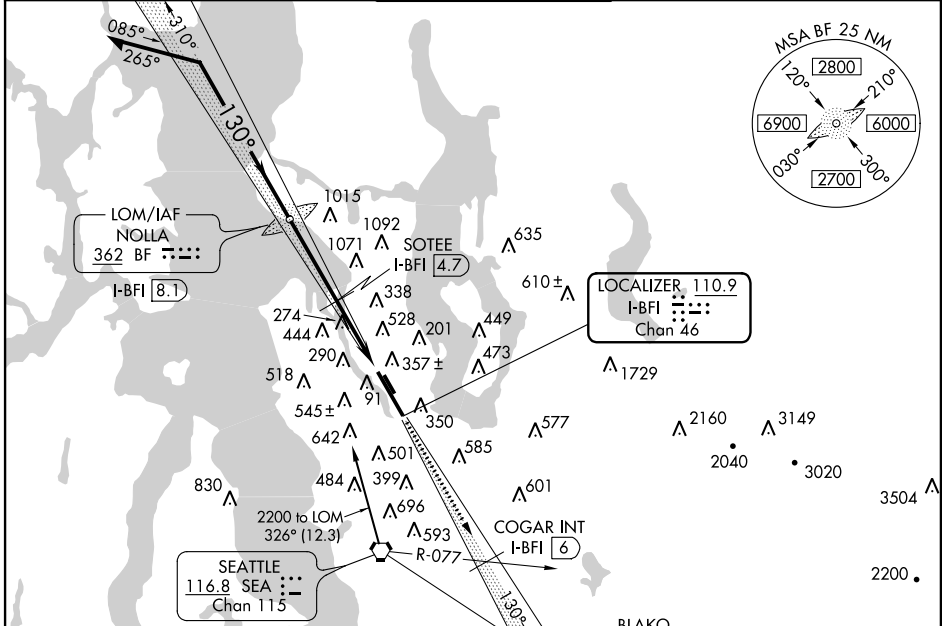
LOC/DME RWY 13R

BOEING FIELD/KING COUNTY INTL (BFI)

⚠ Inoperative table does not apply. Visibility reduction by helicopters NA. Front course unusable beyond 20 degrees left of course.

MALSF
⚠ MISSED APPROACH: Climb to 2000 via I-BFI SE course to COGAR/I-BFI 6 DME/SEA R-077, then continue climb to 6400 via I-BFI SE course and SEA R-104 to BLAKO INT/SEA 11.8 DME and hold, continue climb-in-hold to 6400.

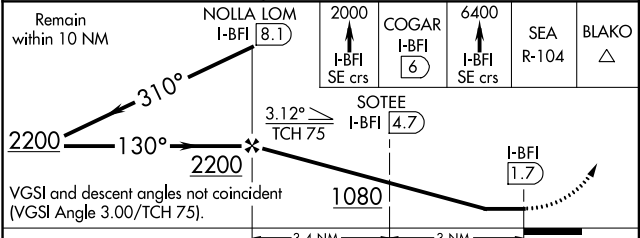
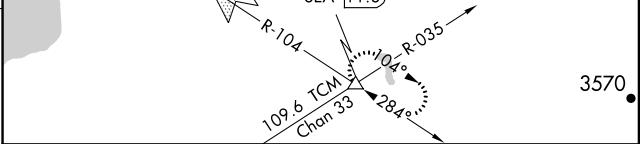
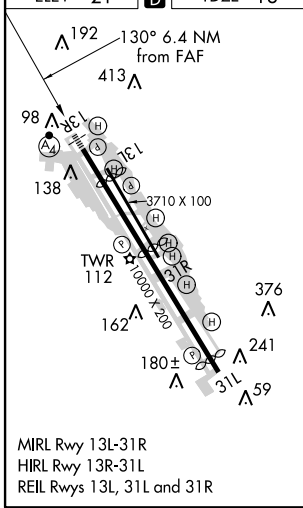
ATIS 127.75	SEATTLE APP CON 119.2 284.7	BOEING TOWER 120.6 257.8	GND CON 121.9	CLNC DEL 132.4
-----------------------	---------------------------------------	------------------------------------	-------------------------	--------------------------



NW-1, 26 JUN 2014 to 24 JUL 2014

NW-1, 26 JUN 2014 to 24 JUL 2014

ELEV 21	D	TDZE 18
---------	----------	---------



CATEGORY	A	B	C	D
S-LOC 13R	560/50	542 (600-1)	560-1½ 542 (600-1½)	560-1¾ 542 (600-1¾)
CIRCLING	780-1 759 (800-1)	840-1¼ 819 (900-1¼)	900-2½ 879 (900-2½)	960-3 939 (1000-3)