

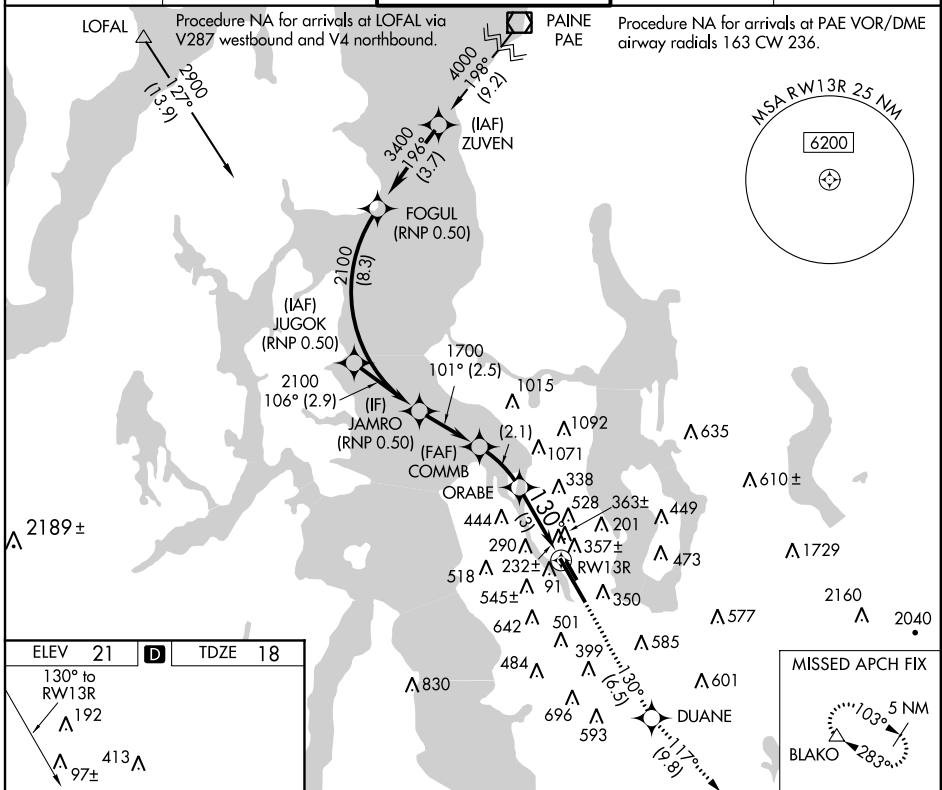
APP CRS 130°	Rwy Idg 9120
	TDZE 18
	Apt Elev 21

RNAV (RNP) Z RWY 13R

BOEING FIELD/KING COUNTY INTL (BFI)

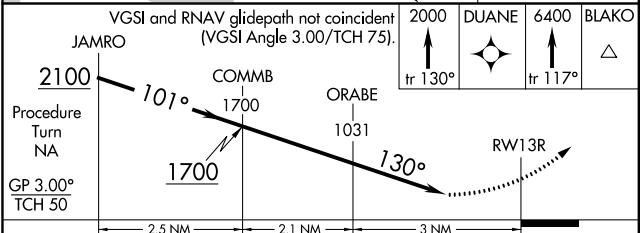
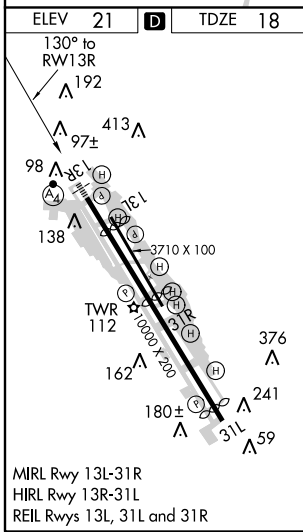
<p>▼ GPS and RF required. For uncompensated Baro-VNAV systems, procedure NA below -3°C (26°F) or above 48°C (119°F).</p> <p>▲ For inoperative MALSF, increase RNP 0.15 visibility to 1¼, RNP 0.30 to 2¼.</p>	<p>MALSF</p>	<p>MISSED APPROACH: Climb to 2000 via 130° track to DUANE then climb to 6400 via 117° track to BLAKO and hold. Continue climb-in-hold to 6400.</p>
--	---------------------	---

ATIS 127.75	SEATTLE APP CON 119.2 284.7	BOEING TOWER 120.6 257.8	GND CON 121.9	CLNC DEL 132.4
-----------------------	---------------------------------------	------------------------------------	-------------------------	--------------------------



NW-1, 26 JUN 2014 to 24 JUL 2014

NW-1, 26 JUN 2014 to 24 JUL 2014



CATEGORY	A	B	C	D
RNP 0.15 DA		523-1½	505 (600-1½)	
RNP 0.30 DA		637-2	619 (700-2)	

AUTHORIZATION REQUIRED