

RNAV (GPS) Y RWY 13R

BOEING FIELD/KING COUNTY INTL (BFI)

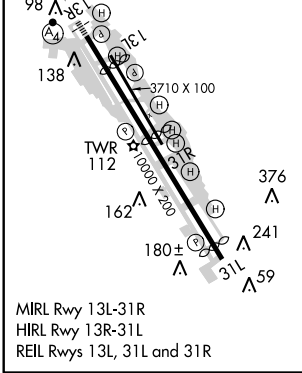
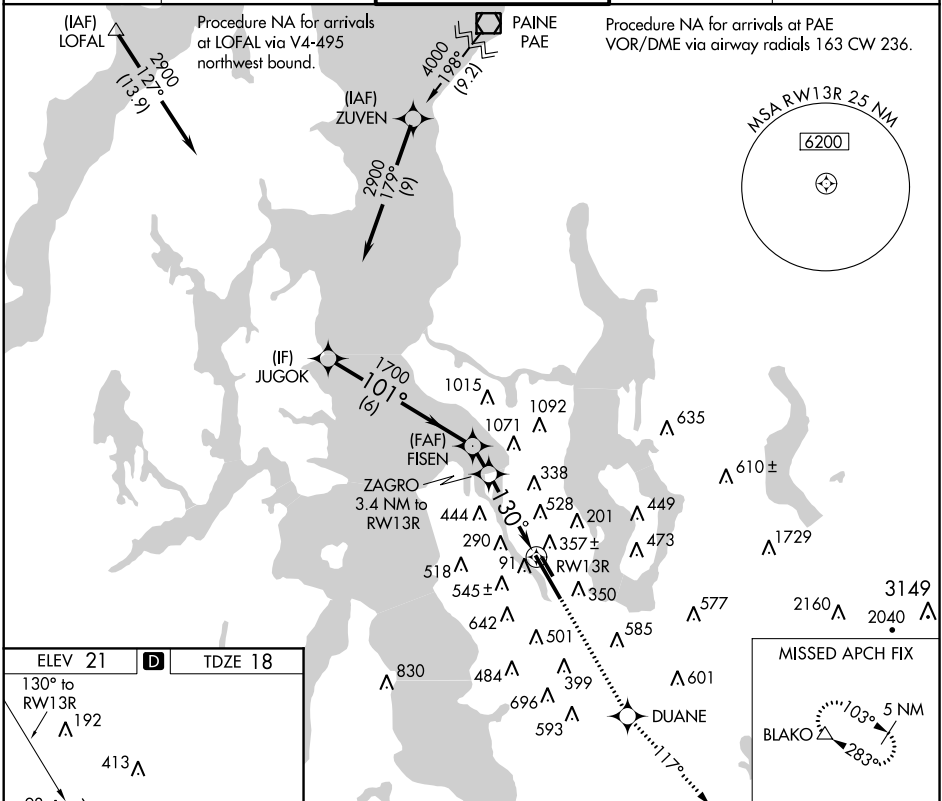
APP CRS 130°	Rwy Idg 9120
	TDZE 18
	Apt Elev 21

▼ Circling to Rwy 13L/31R NA at night.
▲ Inoperative table does not apply. DME/DME RNP -0.3 NA.
 Visibility reduction by helicopters NA.

MALSF

MISSED APPROACH: Climb to 6400 direct DUANE and via 117° track to BLAKO and hold, continue climb-in-hold to 6400.

ATIS 127.75	SEATTLE APP CON 119.2 284.7	BOEING TOWER 120.6 257.8	GND CON 121.9	CLNC DEL 132.4
-----------------------	---------------------------------------	------------------------------------	-------------------------	--------------------------



	JUGOK	VGSIs and descent angles not coincident (VGSi Angle 3.00/TCH 75).		6400	DUANE	BLAKO
		FISEN	ZAGRO			
	2900	1700	1280			
Procedure Turn NA	6 NM	1.1 NM	1.4 NM	2 NM		
CATEGORY	A	B	C	D		
LNNAV MDA	720/50	703 (700-1)	720-2 703 (700-2)	720-2½ 703 (700-2½)		
CIRCLING	780-1 759 (800-1)	840-1¼ 819 (900-1¼)	900-2¾ 879 (900-2¾)	960-3 939 (1000-3)		

NW-1, 26 JUN 2014 to 24 JUL 2014

NW-1, 26 JUN 2014 to 24 JUL 2014