

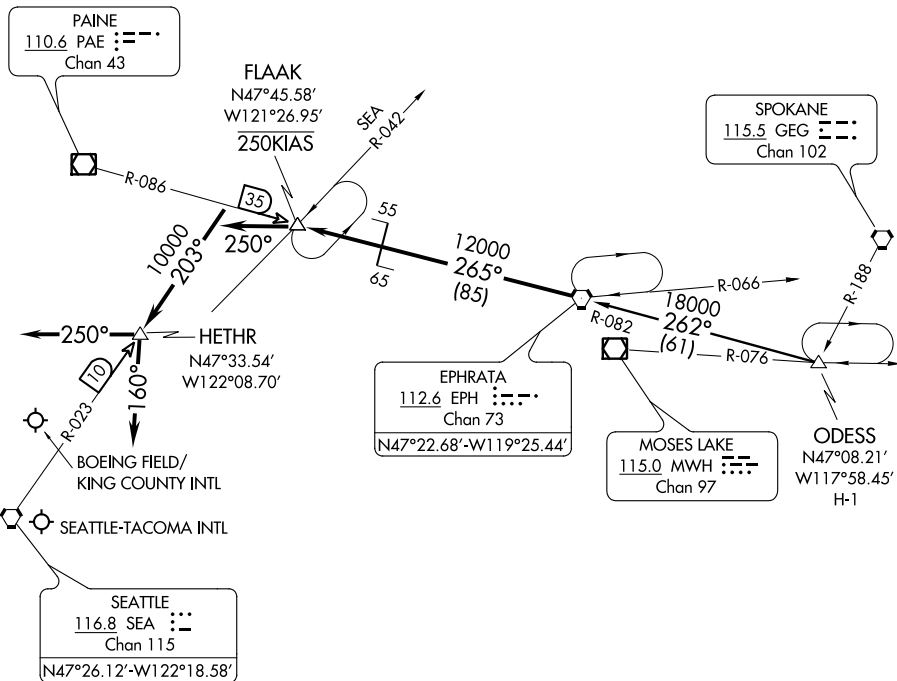
(EPH.EPH6) 10042

EPHRATA SIX ARRIVAL

ST-582 (FAA)

SEATTLE, WASHINGTON

SEATTLE APP CON
123.9 338.2
SEATTLE-TACOMA ATIS
118.0
BOEING FIELD ATIS
127.75



NW-1, 26 JUN 2014 to 24 JUL 2014

NW-1, 26 JUN 2014 to 24 JUL 2014

NOTE: DME and RADAR required.

ODESS TRANSITION (ODESS.EPH6): From over ODESS INT via EPH R-082 to EPH VORTAC. Thence....

....From over EPH VORTAC via EPH R-265 and PAE R-086 to FLAAK INT. Then via heading 250° to intercept the SEA R-023, then via SEA R-023 to HETHR DME Fix, thence....

LANDING NORTH: Heading 160° for vectors to final approach course;

LANDING SOUTH: Heading 250° for vectors to final approach course.

LOST COMMUNICATIONS: From over HETHR DME proceed direct SEA VORTAC.

EPHRATA SIX ARRIVAL

SEATTLE, WASHINGTON

(EPH.EPH6) 10042