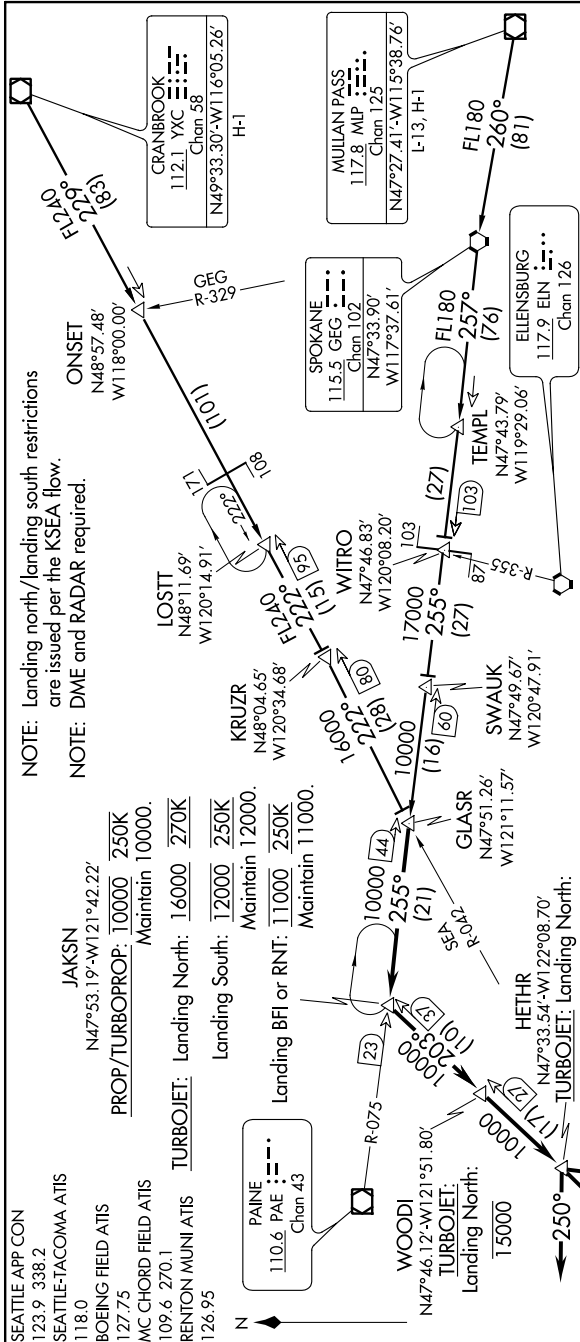


GLASR NINE ARRIVAL

ST-582 (FAA)

SEATTLE, WASHINGTON

NW-1, 26 JUN 2014 to 24 JUL 2014



GLASR NINE ARRIVAL

SEATTLE, WASHINGTON

NOTE: Landing north/landing south restrictions are issued per the KSEA flow.

NOTE: DME and RADAR required.

CRANBROOK TRANSITION (YXC.GLASR9): From over YXC VOR/DME on YXC R-229 to ONSET INT, then on YXC R-229 and SEA R-042 to LOSTT DME, then on SEA R-042 GLASR DME. Thence. . . .

MULIAN PASS TRANSITION (MLP.GLASR9): From over MLP VOR/DME on MLP R-260 to GEG VORTAC, then on GEG R-257 to WITRO INT, then on PAE R-075 to GLASR DME. Thence. . . . from over GLASR/PAE 44 DME on PAE R-075 to JAKSN INT/PAE 23 DME, then on the SEA R-023 to WOODI/SEA 27 DME, then on SEA R-023 to HETHR/SEA 10 DME. Thence. . . .

LANDING NORTH: . . . heading 160° for vectors to final approach course.

LANDING SOUTH: . . . heading 250° for vectors to final approach course.

LANDING McCHORD FIELD: . . . from over HETHR DME fix, proceed direct SEA VORTAC.

LANDING RENTON MUNI: . . . from over HETHR DME fix, proceed direct SEA VORTAC.

LOST COMMUNICATIONS: From over HETHR DME fix, proceed direct SEA VORTAC.

NW-1, 26 JUN 2014 to 24 JUL 2014