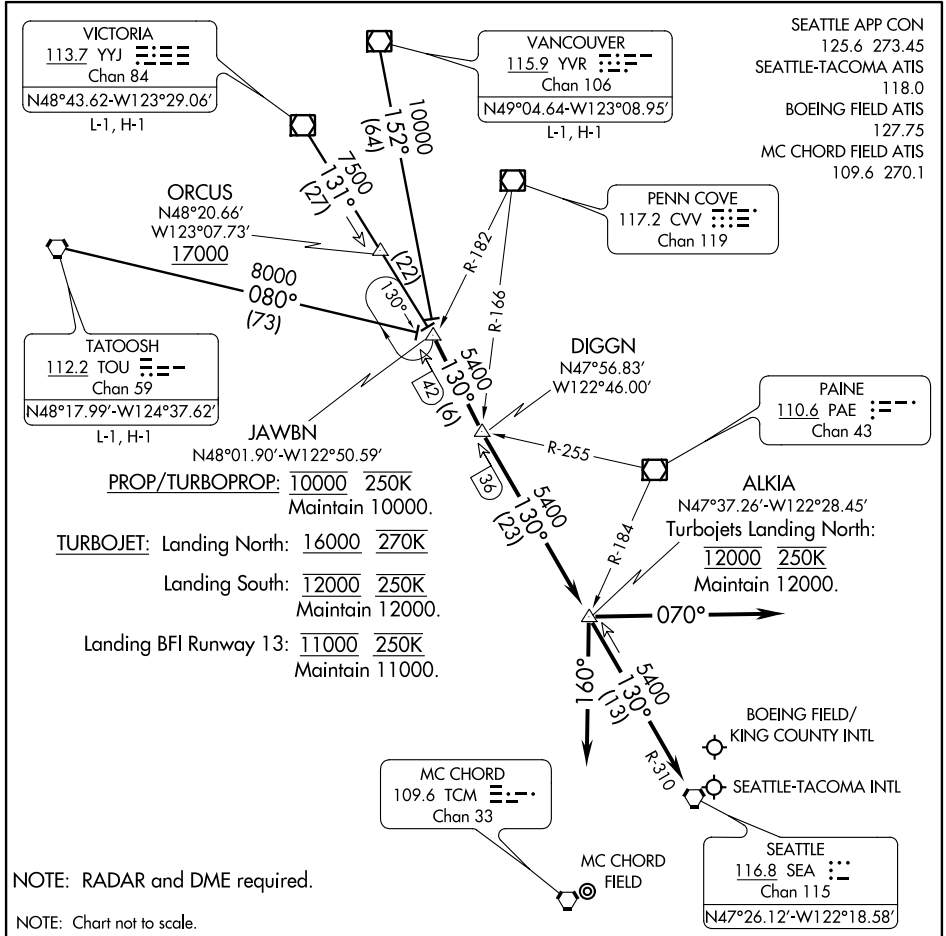


(JAWBN.JAWBN3) 13122
JAWBN THREE ARRIVAL

ST-582 (FAA)

SEATTLE, WASHINGTON



NW-1, 26 JUN 2014 to 24 JUL 2014

NW-1, 26 JUN 2014 to 24 JUL 2014

NOTE: RADAR and DME required.

NOTE: Chart not to scale.

- TATOOSH TRANSITION (TOU.JAWBN3): From over TOU VORTAC on TOU R-080 to JAWBN INT. Thence. . . .
- VANCOUVER TRANSITION (YVR.JAWBN3): From over YVR VOR/DME on YVR R-152 to JAWBN INT. Thence. . . .
- VICTORIA TRANSITION (YYJ.JAWBN3): From over YYJ VOR/DME on YYJ R-131 to JAWBN INT. Thence. . . .
-from over JAWBN INT/SEA 42 DME on SEA R-310 to DIGGN INT/SEA 36 DME then on SEA R-310 to ALKIA INT/SEA 13 DME, thence. . . .
- LANDING NORTH:depart ALKIA INT heading 160° for vectors to final approach course.
- LANDING SOUTH:depart ALKIA INT heading 070° for vectors to final approach course.
- LANDING McCHORD FIELD:after ALKIA INT proceed direct SEA VORTAC.
- LOST COMMUNICATIONS: After ALKIA INT proceed direct SEA VORTAC.

JAWBN THREE ARRIVAL
 (JAWBN.JAWBN3) 13122

SEATTLE, WASHINGTON