

APP CRS	Rwy Idg	<b>7498</b>
<b>120°</b>	TDZE	<b>4123</b>
	Apt Elev	<b>4124</b>

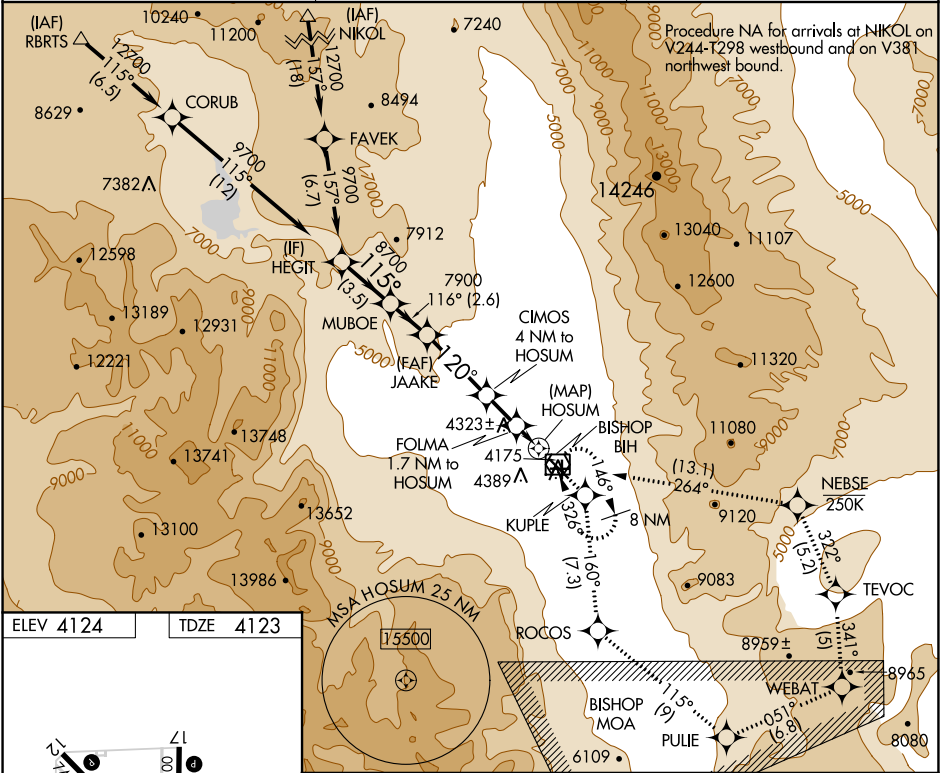
# RNAV (GPS) Z RWY 12

BISHOP (BIH)

**⚠** DME/DME RNP-0.3 NA  
 Missed approach requires minimum climb of 325 feet per NM to 11000; if unable, see RNAV (GPS) Y RWY 12.

**⚠** MISSED APPROACH: (Do not exceed 250 KIAS until NEBSE)  
 Climb to 13000 direct KUPLE and on track 160° to ROCOS and on track 115° to PULIE and on track 051° to WEBAT and on track 341° to TEVOC and on track 322° to NEBSE and on track 264° to BIH VOR/DME and hold.

ASOS <b>119.025</b>	OAKLAND CENTER <b>125.75 284.65</b>	UNICOM <b>123.0 (CTAF)</b>
------------------------	--	-------------------------------



ELEV 4124	TDZE 4123
-----------	-----------

MIRL Rwy 8-26, 12-30, and 17-35  
 REL Rwy 12, 17, 30 and 35

HEGIT	MUBOE	JAAKE	KUPLE	ROCOS
9700	8700	7900	6200	5200
3.5 NM		2.6 NM		4.5 NM
CATEGORY A		CATEGORY B		CATEGORY C
LNAV MDA 4580-1¼		457 (500-1¼)		NA
CIRCLING 6420-1¼		2296 (2300-1¼)		2296 (2300-3)

SW-2, 25 FEB 2021 to 25 MAR 2021

SW-2, 25 FEB 2021 to 25 MAR 2021