

BILOXI, MISSISSIPPI

ILS or LOC RWY 22

LOC I-BIX 109.7	APCH CRS 217°	Rwy ldg TDZE Arprt Elev 6631 19 33
---------------------------	-------------------------	--

AL-49 [USAF]

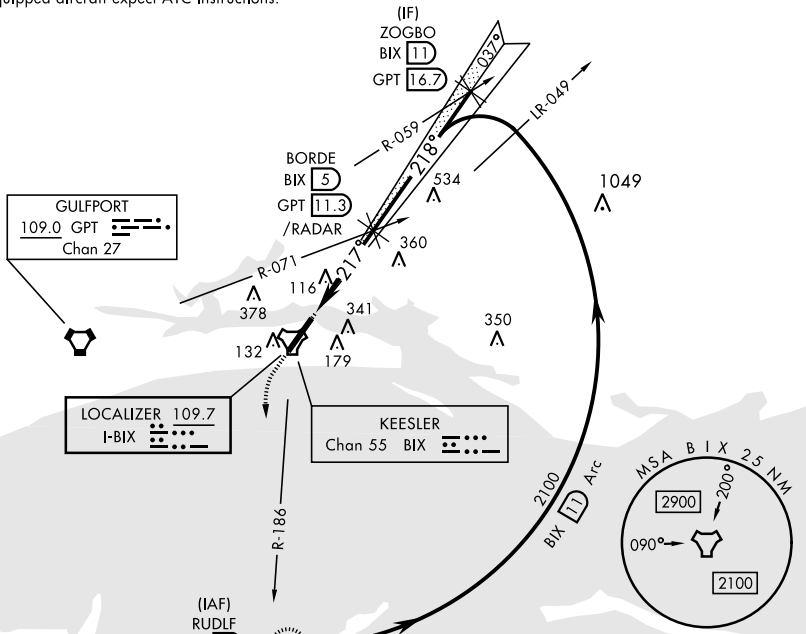
KEESLER AFB (KBIX)

▼ * When ALS inop, increase CAT AB RVR to 55, vis to 1 mile, CAT CD vis to 1 1/2 miles.

ALSF-1 MISSED APPROACH: Climb to 800 tracking 217°, upon reaching 800 turn left to intercept BIX TACAN R-186 climbing to 2200 to 11 DME (RUDLF) and hold.

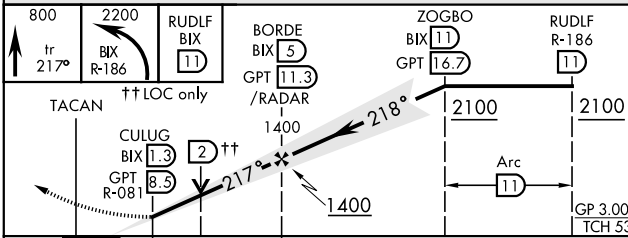
ATIS 281.55	GULFPORT APP CON 124.6 354.1 (130°- 309°) 127.5 254.25 (310°- 129°)	KEESLER TOWER * 120.75 269.075	GND CON 121.8 275.8	CLNC DEL 121.8 275.8
-----------------------	---	--	-------------------------------	--------------------------------

† Missed approach requires use of RNAV or ATC RADAR monitoring.
Non-TACAN equipped aircraft expect ATC instructions.



RADAR or DME REQUIRED

EMERG SAFE ALT 100 NM 3100



ELEV 33	TDZE 19
Rwy 22 2000' non-std apch lgt system	
217° 4.2 NM from FAF	
Rwy 4 ldg 6031', Rwy 22 ldg 6631', REIL Rwy 4, HIRL Rwy 4-22	
FAF to MAP 3.7 NM	
Knots	60 90 120 150 180
Min:Sec	3:42 2:28 1:51 1:29 1:14

CATEGORY	A	B	C	D
S-ILS 21	219/40		200	(200-3/4)
S-LOC 21*	460/40	441 (500-3/4)	460/55	441 (500-1)
CIRCLING	600-1	680-1	700-1 3/4	700-2
	567 (600-1)	647 (700-1)	667 (700-1 3/4)	667 (700-2)

BILOXI, MISSISSIPPI

30° 25' N-88° 55' W

KEESLER AFB (KBIX)

Orig 27FEB20

ILS or LOC RWY 22

SC-4, 25 FEB 2021 to 25 MAR 2021

SC-4, 25 FEB 2021 to 25 MAR 2021