

BILOXI, MISSISSIPPI

# RNAV (GPS) RWY 4

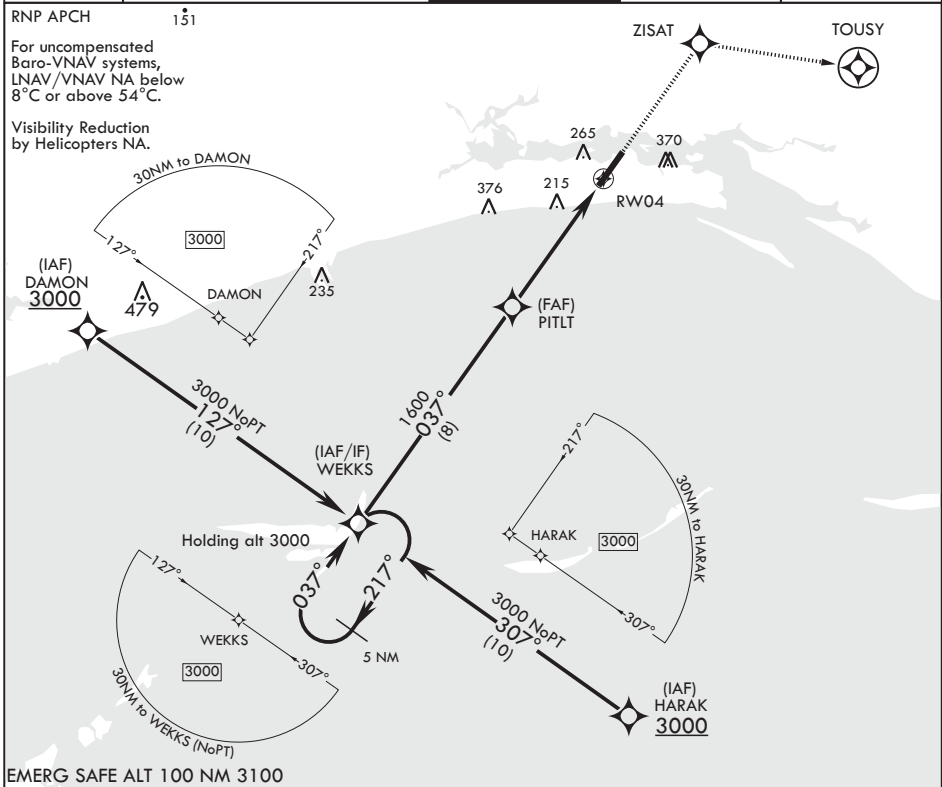
APCH CRS <b>037°</b>	Rwy ldg <b>6031</b>
	TDZE <b>23</b>
	Arprt Elev <b>33</b>

AL-49 (USAF)

KEESLER AFB (KBIX)

**▽** MISSED APPROACH: Climb to 2100 direct ZISAT and track 101° to TOUSY. Expect ATC instructions.

ATIS <b>281.55</b>	GULFPORT APP CON/DEP CON <b>124.6 354.1 130° - 309°</b> <b>127.5 254.25 310° - 129°</b>	TOWER* <b>120.75 269.075</b>	GND CON <b>121.8 275.8</b>	CLNC DEL <b>121.8 275.8</b>
-----------------------	---	---------------------------------	-------------------------------	--------------------------------



	2100	ZISAT	ELEV 33	TDZE 23
			Rwy 22 2000' non-std apch lgt system Rwy 4 ldg 6031' Rwy 22 ldg 6631'	

WEKKS

3000

217°

037°

037°

PITLT

1600

\*LNAV only

\*1.4 NM to RWY 04

RWY 04

4.7 NM

GP 3.04° TCH 48

CATEGORY	A	B	C	D
LNAV/VNAV DA	520-1¾		497	(500-1¾)
LNAV MDA	520/55	497 (500-1)	520-1¾	497 (500-1¾)
◻ CIRCLING	600-1 567 (600-1)	680-1 647 (700-1)	700-1¾ 667 (700-1¾)	700-2 667 (700-2)

0.9% DOWN

7831 x 150

TWR

037° to RWY 04

HIRL all Rwws REIL Rwy 4

BILOXI, MISSISSIPPI

30°25'N - 88°55'W

KEESLER AFB (KBIX)

Orig 27FEB20

# RNAV (GPS) RWY 4

SC-4, 25 FEB 2021 to 25 MAR 2021

SC-4, 25 FEB 2021 to 25 MAR 2021