

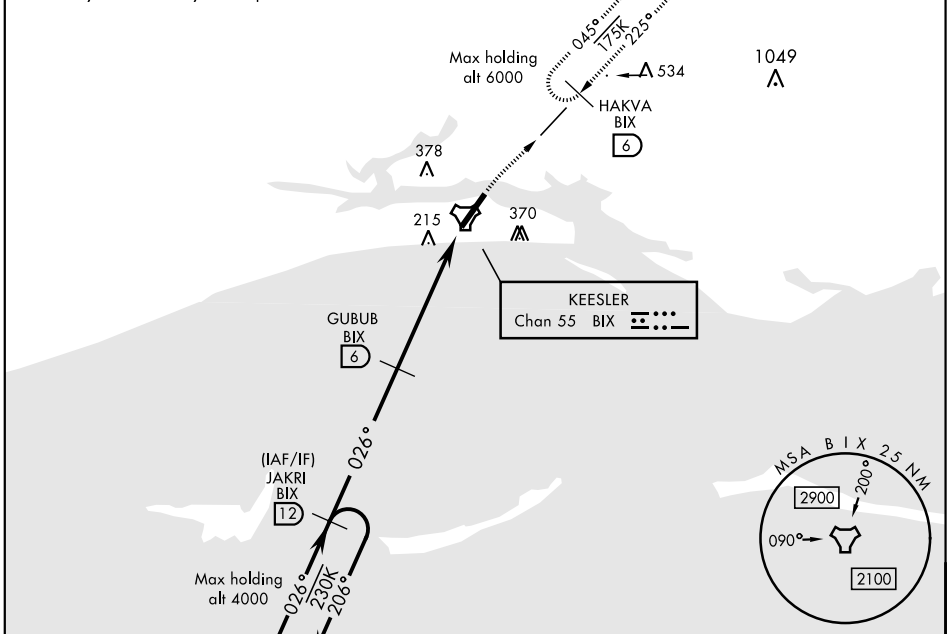
# TACAN RWY 4

TACAN BIX Chan <b>55</b>	APCH CRS <b>026°</b>	Rwy ldg TDZE Arprt Elev <b>6031</b> <b>23</b> <b>33</b>	AL-49 [USAF]	KEESLER AFB (KBIX)
-----------------------------	-------------------------	---	--------------	--------------------

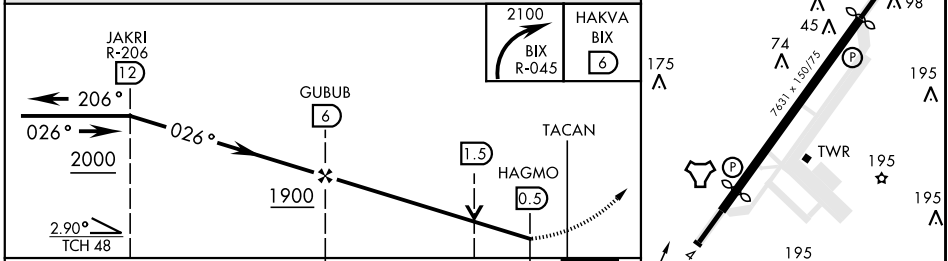
† MISSED APPROACH: Turn right climbing to 2100 to intercept BIX TACAN R-045 to 6 DME (HAKVA) and hold.

ATIS <b>281.55</b>	GULFPORT APP CON <b>124.6 354.1</b> (130°- 309°) <b>127.5 254.25</b> (310°- 129°)	KEESLER TOWER ★ <b>120.75 269.075</b>	GND CON <b>121.8 275.8</b>	CLNC DEL <b>121.8 275.8</b>
-----------------------	---	--	-------------------------------	--------------------------------

† Missed Approach requires use of RNAV or ATC RADAR monitoring.  
Visibility reduction by helicopters NA.



ELEV 33	TDZE 23
Rwy 22 2000' non-std apch lgt system	



EMERG SAFE ALT 100 NM 3100	<table border="1"> <tr> <td>2100</td> <td>HAKVA BIX 6</td> </tr> <tr> <td>BIX R-045</td> <td></td> </tr> </table>				2100	HAKVA BIX 6	BIX R-045	
2100	HAKVA BIX 6							
BIX R-045								
CATEGORY	A	B	C	D				
S-4	520/55 497 (500-1)	680-1	520-1 3/8 497 (500-1 3/8)	700-2				
600-1	647 (700-1)	667 (700-1 3/4)	667 (700-2)					
CIRCLING	567 (600-1)	647 (700-1)	667 (700-1 3/4)	667 (700-2)				

# TACAN RWY 4

SC-4, 25 FEB 2021 to 25 MAR 2021

SC-4, 25 FEB 2021 to 25 MAR 2021