

TACAN-A

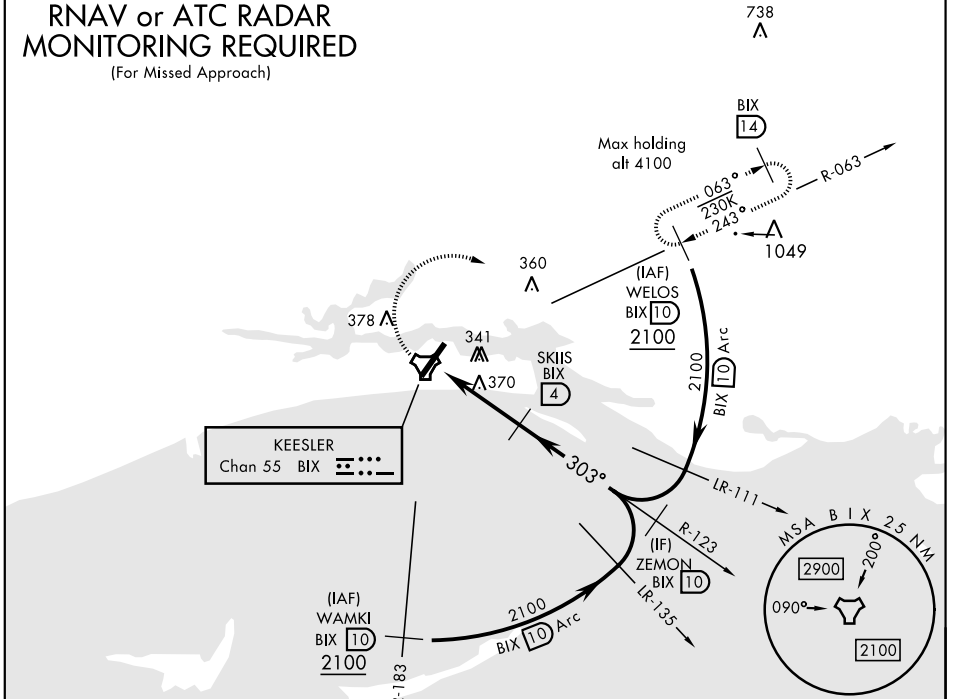
TACAN BIX Chan 55	APCH CRS 303°	Rwy ldg THRE Arprt Elev N/A N/A 33	AL-49 [USAF]	KEESLER AFB (KBIX)
-----------------------------	-------------------------	--	--------------	--------------------

▽ MISSED APPROACH: Climb tracking 303° to BIX TACAN then right turn to intercept BIX R-063 climbing to 2100 to 10 DME (WELOS) and hold.

ATIS 281.55	GULFPORT APP CON 124.6 354.1 (130°-309°) 127.5 254.25 (310°-129°)	KEESLER TOWER ★ 120.75 269.075	GND CON 121.8 275.8	CLNC DEL 121.8 275.8
-----------------------	---	--	-------------------------------	--------------------------------

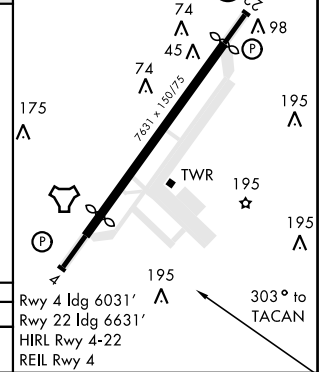
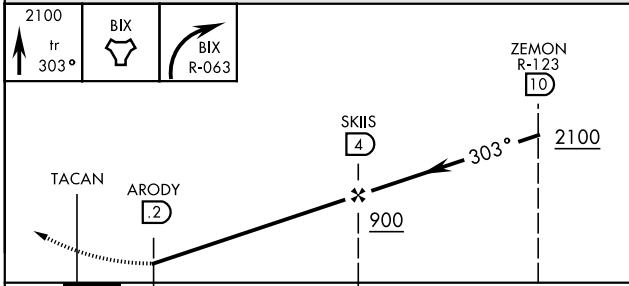
RNAV or ATC RADAR MONITORING REQUIRED

(For Missed Approach)



EMERG SAFE ALT 100 NM 3100

ELEV 33
Rwy 22 2000' non-std apch lgt system



CATEGORY	A	B	C	D
CIRCLING	640-1 607 (700-1)	680-1 647 (700-1)	700-1 3/4 667 (700-1 3/4)	700-2 667 (700-2)

TACAN-A

SC-4, 25 FEB 2021 to 25 MAR 2021

SC-4, 25 FEB 2021 to 25 MAR 2021