

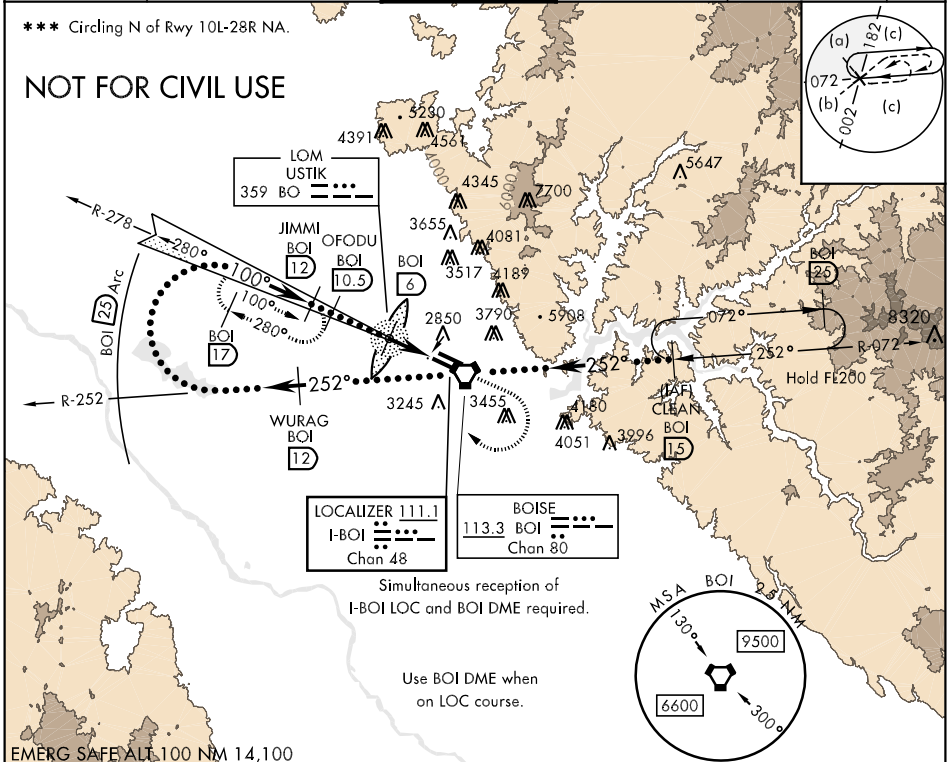
HI-ILS or LOC/DME RWY 10R

LOC I-BOI 111.1	APCH CRS 100°	Rwy Idg TDZE Arpt Elev 9763 2836 2871	JAL-57 [USAF]	BOISE AIR TERMINAL (GOWEN FLD) (KBOI)
---------------------------	-------------------------	---	---------------	---------------------------------------

* When ALS inop, increase RVR to 40 and vis to 3/4 mile.
 ** When ALS inop, increase CAT CD RVR to 50 and vis to 1 mile, CAT E RVR to 60 and vis to 1 1/4 miles.

ALSF-2 MISSED APPROACH: Climb to 3700 then climbing right turn to 5000 via heading 320° to intercept BOI VORTAC R-278 then direct JIMMI INT and hold.

ATIS 123.9 290.4	BIG SKY APP CON 119.6 269.4	BOISE TOWER 118.1 257.8	GND CON 121.7 348.6	CLNC DEL 125.9 323.2	ASOS
----------------------------	---------------------------------------	-----------------------------------	-------------------------------	--------------------------------	------



NW-1, 26 JUN 2014 to 24 JUL 2014

NW-1, 26 JUN 2014 to 24 JUL 2014

3700	5000	JIMMI BOI 12	WURAG BOI R-252 12	VGSI and descent angles not coincident	CLEAN R-072 BOI 15	ELEV 2871	TDZE 2836
↑	hdg 320°					100° 3.6 NM from FAF	
Right at 12,000 remain within 25 NM of BOI VORTAC	700°	JIMMI BOI 12	OFODU BOI 10.5	LOM 6 3.3	AVVUV 2.7	2948	2908
GS 3.00° TCH 58	5900	5500	4100	4028		2887	2897
CATEGORY	C	D	E				
S-ILS 10R *	3036/24		200 (200-1/2)				
S-LOC 10R **	3160/24	324 (400-1/2)	3160/40	324 (400-3/4)			
CIRCLING ***	3440-1 1/2	569 (600-1 1/2)	3440-2	569 (600-2)	3820-3	FAF to MAP 3.3 NM	
						Knots	120 140 160 180 200
						Min:Sec	1:39 1:25 1:14 1:06 0:59

TDZL/CL Rwy 10R-28L
 HIRL Rwy 10L-28R, 10R-28L
 REL Rwy 10L
 TWR 3136
 FAF to MAP 3.3 NM

BOISE, IDAHO 43°34'N-116°13'W BOISE AIR TERMINAL (GOWEN FLD) (KBOI)

HI-ILS or LOC/DME RWY 10R