

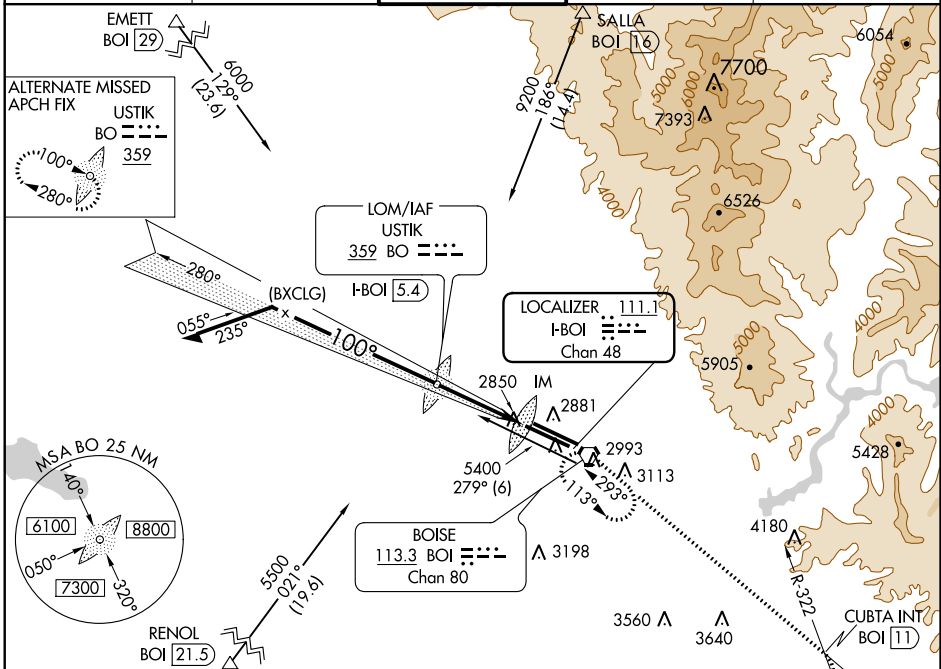
LOC/DME I-BOI 111.1 Chan 48	APP CRS 100°	Rwy Idg TDZE Apt Elev 9763 2836 2871
---	------------------------	--

ILS RWY 10R (CAT II & III)

BOISE AIR TERMINAL/GOWEN FIELD (BOI)

ALSF-2 MISSED APPROACH: Climb to 6000 via BOI VORTAC R-113 to CUBTA INT/BOI 11 DME, and right turn direct BOI VORTAC and hold.	
---	--

ATIS 123.9 290.4	BIG SKY APP CON 119.6 269.4	BOISE TOWER 118.1 257.8	GND CON 121.7 348.6	CLNC DEL 125.9 323.2
----------------------------	---------------------------------------	--	-------------------------------	--------------------------------

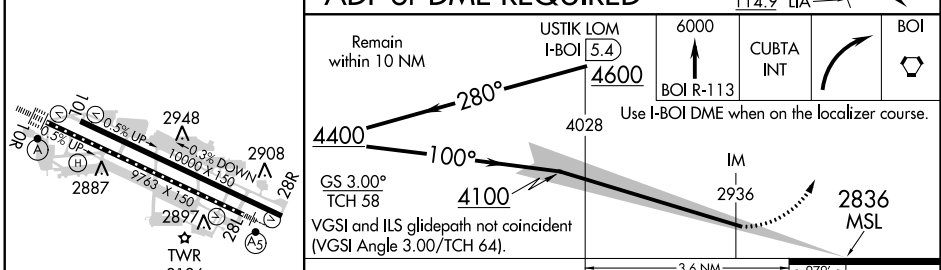


NW-1, 26 JUN 2014 to 24 JUL 2014

NW-1, 26 JUN 2014 to 24 JUL 2014

ELEV 2871	D	TDZE 2836
-----------	----------	-----------

ADF or DME REQUIRED



CATEGORY	A	B	C	D
S-ILS 10R	CAT II RA 102/12 100 DA 2936			
S-ILS 10R	CAT IIIa RVR 07			
S-ILS 10R	CAT IIIb RVR 06			
S-ILS 10R	CAT IIIc NA			

CATEGORY II & III ILS - SPECIAL AIRCREW & AIRCRAFT CERTIFICATION REQUIRED

REIL Rwy 10L
TDZ/CL Rwys 10R and 28L
HIRL Rwys 10L-28R and 10R-28L