

LOC/DME I-AAD <b>110.15</b> Chan <b>38 (Y)</b>	APP CRS <b>280°</b>	Rwy ldg <b>10000</b> THRE <b>2871</b> Apt Elev <b>2871</b>
--	------------------------	---

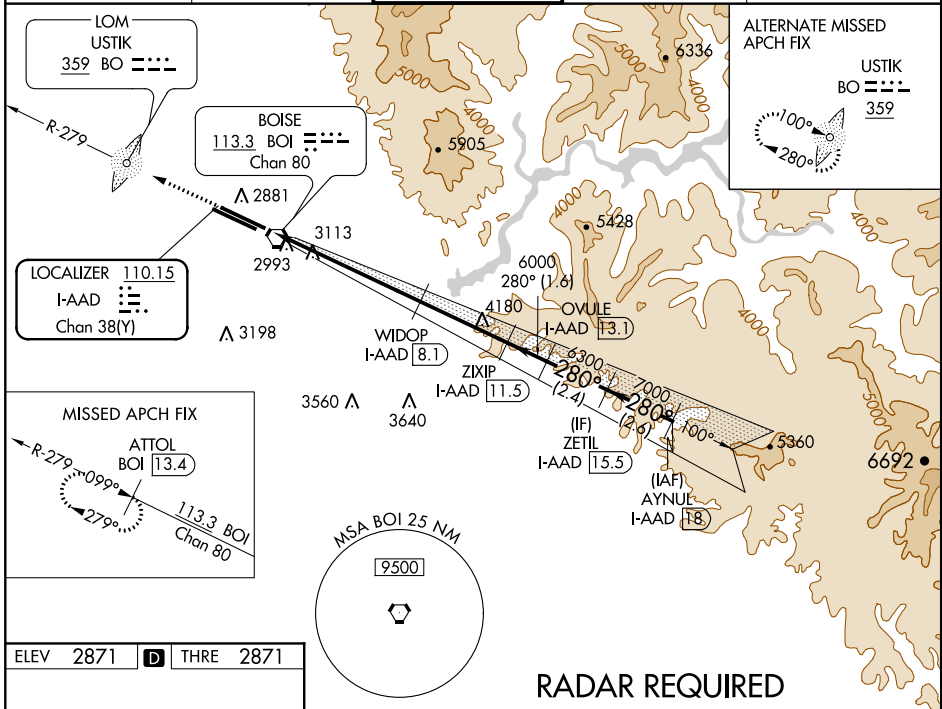
# ILS or LOC/DME RWY 28R

BOISE AIR TERMINAL/GOWEN FIELD (BOI)

**⚠** Circling NA north of Rwy 10L-28R.  
**⚠** RADAR Required.

MISSED APPROACH: Climb to 6000 on BOI VORTAC R-279 to ATTOL/BOI 13.4 DME and hold.

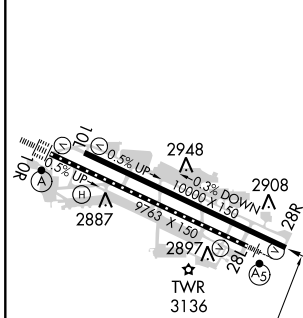
ATIS <b>123.9 290.4</b>	BIG SKY APP CON <b>119.6 269.4</b>	BOISE TOWER <b>118.1 257.8</b>	GND CON <b>121.7 348.6</b>	CLNC DEL <b>125.9 323.2</b>
----------------------------	---------------------------------------	-----------------------------------	-------------------------------	--------------------------------



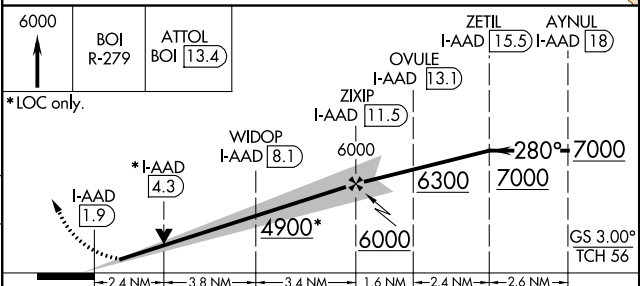
NW-1, 26 JUN 2014 to 24 JUL 2014

NW-1, 26 JUN 2014 to 24 JUL 2014

ELEV 2871	<b>D</b>	THRE 2871
-----------	----------	-----------



REIL Rwy 10L  
TDZ/CL Rwy 10R and 28L  
HIRL Rwy 10L-28R and 10R-28L



CATEGORY	A	B	C	D
S-ILS 28R	3121/40		250 (300-3/4)	
S-LOC 28R	3700/55 829 (900-1/4)	3700/60 829 (900-1/4)	3700-2 1/2	829 (900-2 1/2)
CIRCLING	3700-1 1/4	829 (900-1/4)	3700-2 1/2 829 (900-2 1/2)	3700-2 3/4 829 (900-2 3/4)