

APP CRS	Rwy Idg	10000
100°	TDZE	2844
	Apt Elev	2871

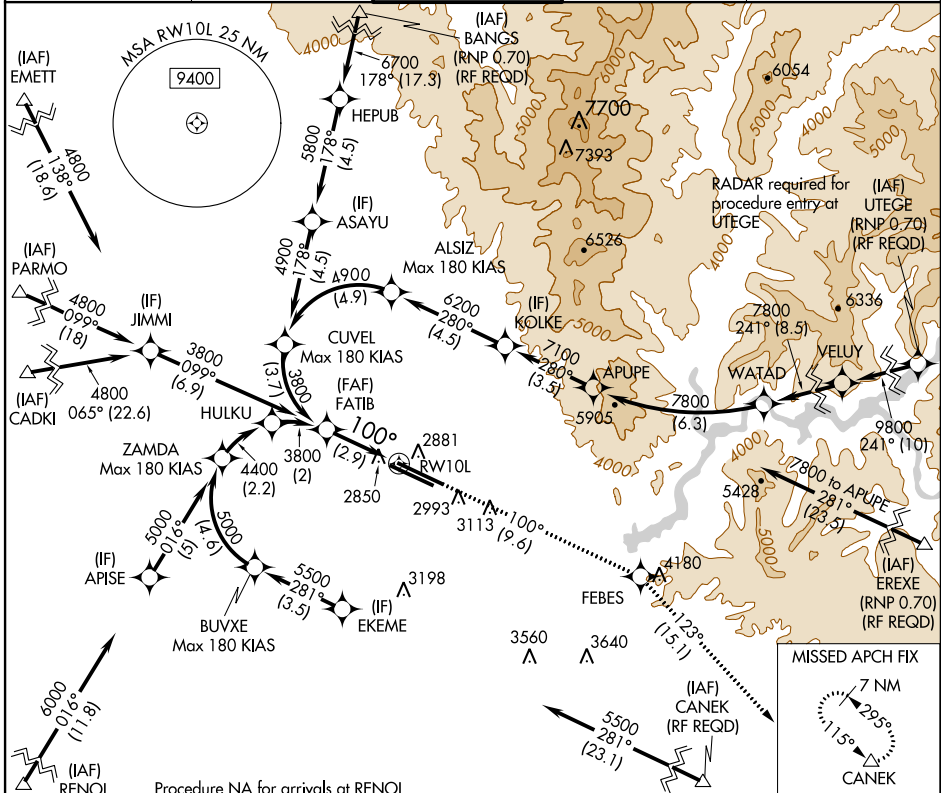
RNAV (RNP) Z RWY 10L

BOISE AIR TERMINAL/GOWEN FIELD (BOI)

V GPS required. For uncompensated Baro-VNAV systems, procedure NA below -14°C (7°F) or above 41°C (107°F). When VGSI inoperative, procedure NA at night.

MISSED APPROACH: Climb to 7200 via track 100° to FEBES and via track 123° to CANEK and hold.

ATIS 123.9 290.4	BIG SKY APP CON 119.6 269.4	BOISE TOWER 118.1 257.8	GND CON 121.7 348.6	CLNC DEL 125.9 323.2
----------------------------	---------------------------------------	-----------------------------------	-------------------------------	--------------------------------

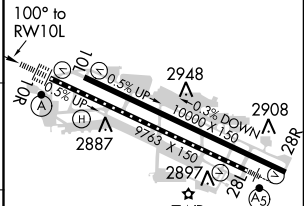
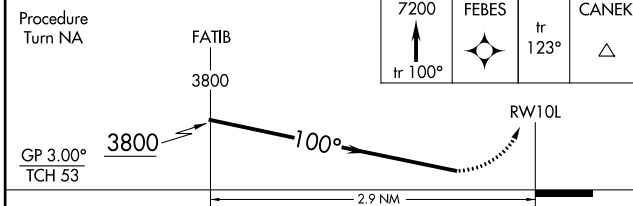


NW-1, 26 JUN 2014 to 24 JUL 2014

NW-1, 26 JUN 2014 to 24 JUL 2014

Procedure NA for arrivals at RENOL via V113 southwest bound.

ELEV	2871	D	TDZE	2844
------	------	----------	------	------



CATEGORY	A	B	C	D
RNP 0.18 DA		3145-1	301 (300-1)	
RNP 0.30 DA		3175-1¼	331 (400-1¼)	

AUTHORIZATION REQUIRED

REIL Rwy 10L
TDZ/CL Rwys 10R and 28L
HIRL Rwys 10L-28R and 10R-28L