

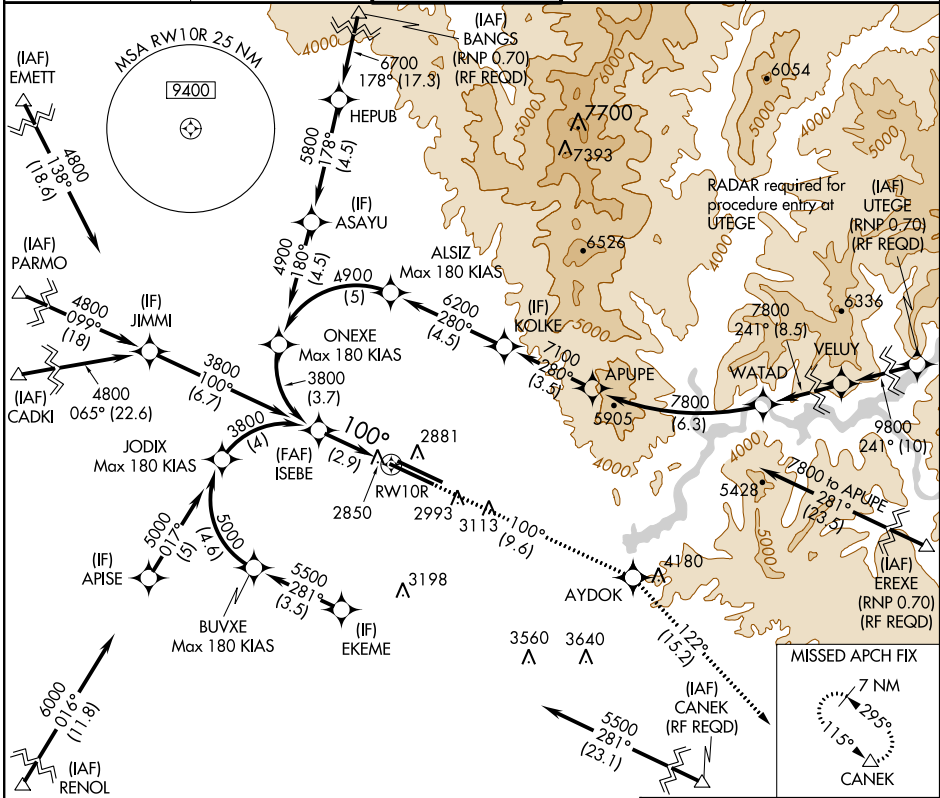
APP CRS	Rwy Idg	<b>9763</b>
<b>100°</b>	TDZE	<b>2836</b>
	Apt Elev	<b>2871</b>

# RNAV (RNP) Z RWY 10R

BOISE AIR TERMINAL/GOWEN FIELD (BOI)

<p><b>▼</b> GPS required. For uncompensated Baro-VNAV systems, procedure NA below -14°C (7°F) or above 42°C (107°F). For inoperative SSALR increase RNP 0.15 and RNP 0.30 visibility all Cats to RVR 5000.</p>	<p>ALSIF-2</p>	<p>MISSED APPROACH: Climb to 7200 via track 100° to AYDOK and via track 122° to CANEK and hold.</p>
--	----------------	---

ATIS <b>123.9 290.4</b>	BIG SKY APP CON <b>119.6 269.4</b>	BOISE TOWER <b>118.1 257.8</b>	GND CON <b>121.7 348.6</b>	CLNC DEL <b>125.9 323.2</b>
----------------------------	---------------------------------------	-----------------------------------	-------------------------------	--------------------------------

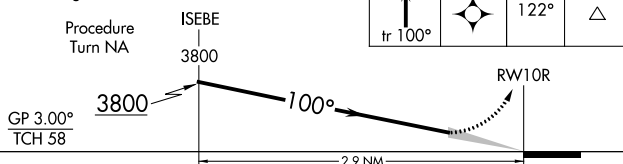


NW-1, 26 JUN 2014 to 24 JUL 2014

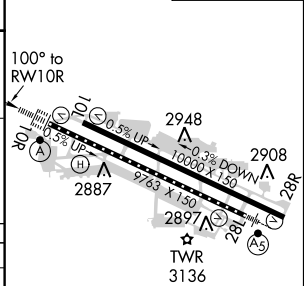
NW-1, 26 JUN 2014 to 24 JUL 2014

Procedure NA for arrivals at RENOL via V113 southwest bound.

VGSI and RNAV glidepath not coincident (VGSI Angle 3.00/TCH 64).



ELEV 2871	<b>D</b>	TDZE 2836
-----------	----------	-----------



REIL Rwy 10L  
TDZ/CL Rwys 10R and 28L  
HIRL Rwys 10L-28R and 10R-28L

## AUTHORIZATION REQUIRED