

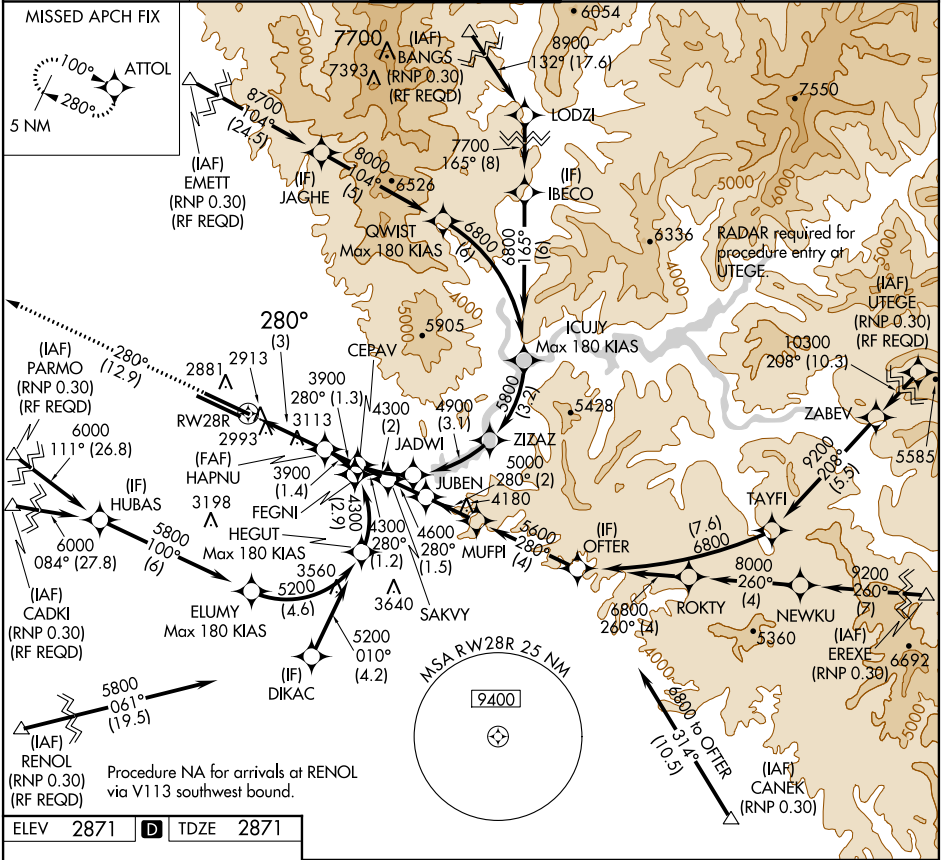
APP CRS <b>280°</b>	Rwy Idg TDZE Apt Elev	<b>10000</b> <b>2871</b> <b>2871</b>
------------------------	-----------------------------	--

# RNAV (RNP) Z RWY 28R

BOISE AIR TERMINAL/GOWEN FIELD (BOI)

**GPS required.** For uncompensated Baro-VNAV systems, procedure NA below -14°C (7°F) or above 42°C (107°F). **MISSED APPROACH:** Climb to 6000 via track 280° to ATTOL and hold, continue climb-in-hold to 6000.

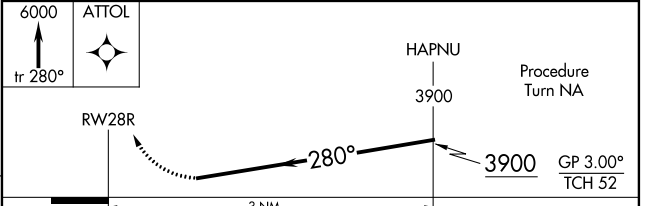
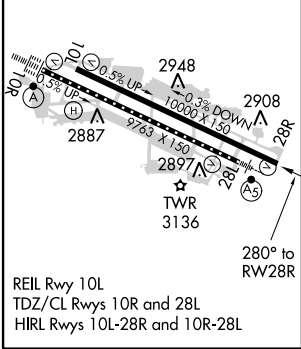
ATIS <b>123.9 290.4</b>	BIG SKY APP CON <b>119.6 269.4</b>	BOISE TOWER <b>118.1 257.8</b>	GND CON <b>121.7 348.6</b>	CLNC DEL <b>125.9 323.2</b>
----------------------------	---------------------------------------	-----------------------------------	-------------------------------	--------------------------------



NW-1, 26 JUN 2014 to 24 JUL 2014

NW-1, 26 JUN 2014 to 24 JUL 2014

ELEV 2871	<b>D</b>	TDZE 2871
-----------	----------	-----------



CATEGORY	A	B	C	D
RNP 0.15 DA		3204/60	333 (400-1¼)	
RNP 0.30 DA		3304-1½	433 (500-1½)	

## AUTHORIZATION REQUIRED