

RNAV (GPS) Y RWY 10L

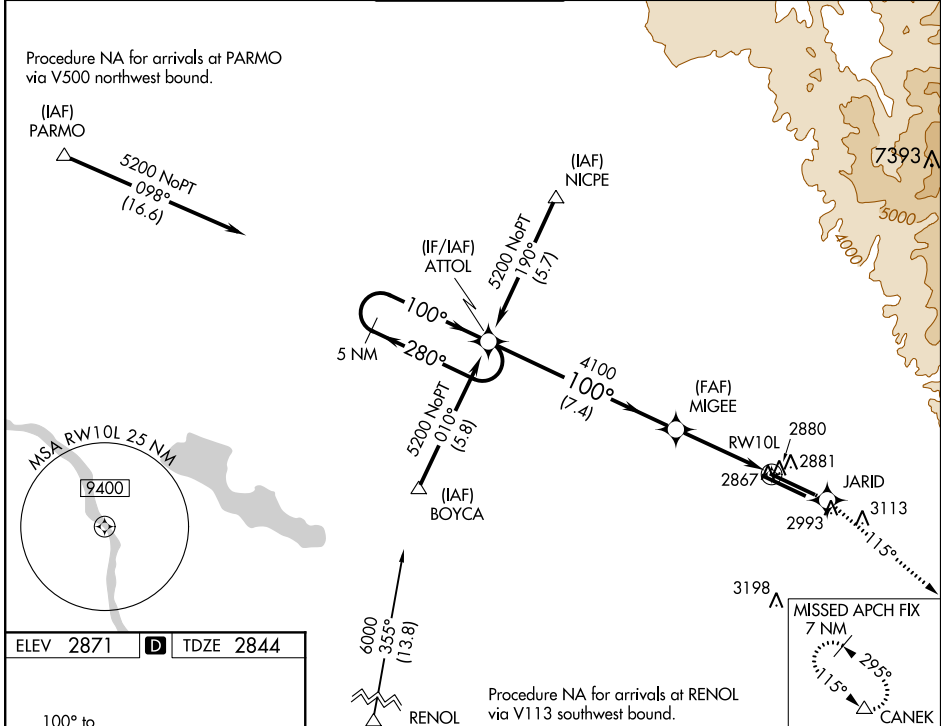
BOISE AIR TERMINAL/GOWEN FIELD (BOI)

WAAS CH 78102 W 10A	APP CRS 100°	Rwy Idg 10000 TDZE 2844 Apt Elev 2871
---	------------------------	--

▽ For uncompensated Baro-VNAV systems, LNAV/VNAV NA below -20°C (-4°F) or above 42°C (108°F).
Circling NA north of Rwys 10L and 28R. DME/DME RNP- 0.3 NA.
Visibility reduction by helicopters NA.

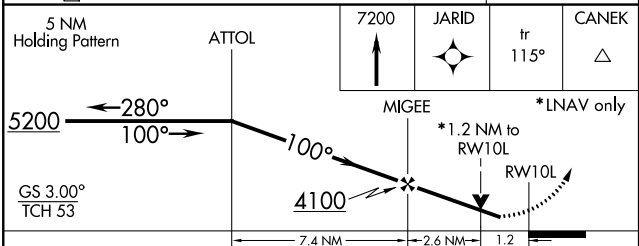
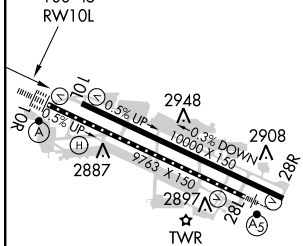
MISSED APPROACH: Climb to 7200 direct JARID and via track 115° to CANEK and hold.

ATIS 123.9 290.4	BIG SKY APP CON 119.6 269.4	BOISE TOWER 118.1 257.8	GND CON 121.7 348.6	CLNC DEL 125.9 323.2
----------------------------	---------------------------------------	-----------------------------------	-------------------------------	--------------------------------



NW-1, 26 JUN 2014 to 24 JUL 2014

NW-1, 26 JUN 2014 to 24 JUL 2014



CATEGORY	A	B	C	D
LPV DA	3094-1		250 (300-1)	
LNAV/VNAV DA	3173-1¼		329 (400-1¼)	
LNAV MDA	3280-1	436 (500-1)	3280-1¼ 436 (500-1¼)	3280-1½ 436 (500-1½)
CIRCLING	3440-1	569 (600-1)	3440-1½ 569 (600-1½)	3440-2 569 (600-2)