

BOISE, IDAHO

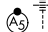
AL-57 (FAA)

# RNAV (GPS) Y RWY 28L

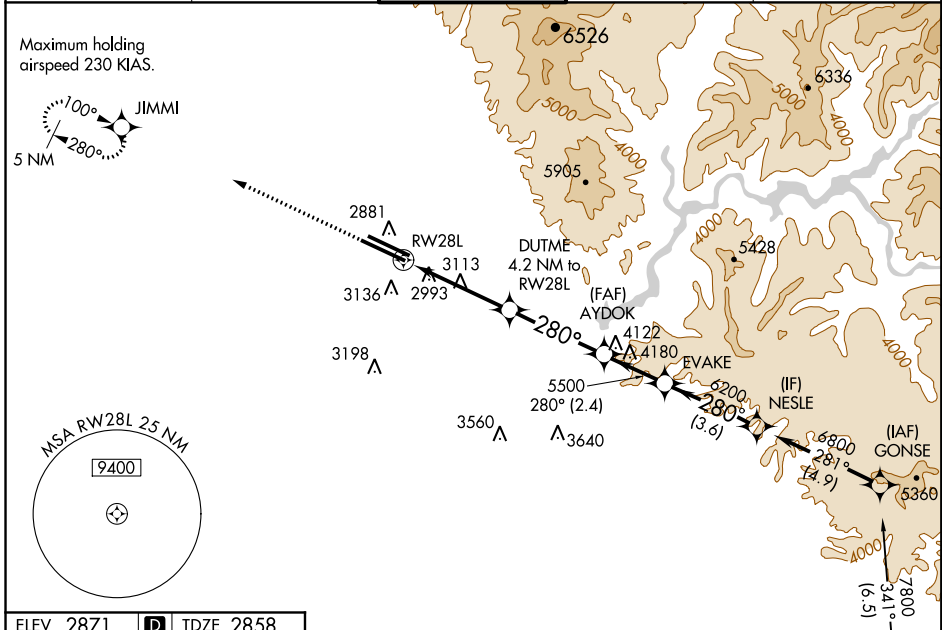
BOISE AIR TERMINAL/GOWEN FIELD (BOI)

WAAS CH <b>77702</b> <b>W28A</b>	APP CRS <b>280°</b>	Rwy Idg TDZE Apt Elev	<b>9763</b> <b>2858</b> <b>2871</b>
--	------------------------	-----------------------------	---

**⚠** Circling NA north of Rwy 10L-28R. For uncompensated Baro-VNAV systems, LNAV/VNAV NA below -20°C (-4°F) or above 43°C (109°F). DME/DME RNP-0.3 NA.  
**⚠** For inoperative MALSR, increase LPV visibility to RVR 5000 all Cats, LNAV/VNAV Cat E to 1½, and LNAV Cat E to 2¼.

MALSR  
  
 MISSED APPROACH: Climb to 6000 direct JIMMI and hold, continue climb-in-hold to 6000.

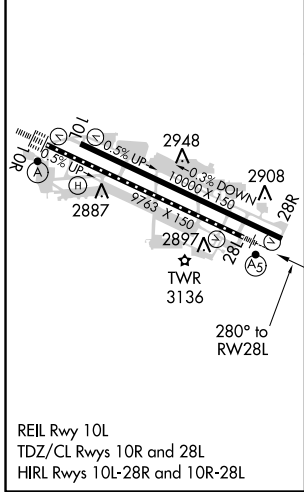
ATIS <b>123.9 290.4</b>	BIG SKY APP CON <b>119.6 269.4</b>	<b>BOISE TOWER</b> <b>118.1 257.8</b>	GND CON <b>121.7 348.6</b>	CLNC DEL <b>125.9 323.2</b>
----------------------------	---------------------------------------	--	-------------------------------	--------------------------------



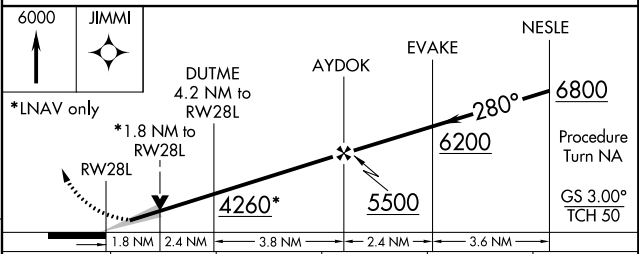
NW-1, 26 JUN 2014 to 24 JUL 2014

NW-1, 26 JUN 2014 to 24 JUL 2014

ELEV 2871	<b>D</b>	TDZE 2858
-----------	----------	-----------



Procedure NA for arrivals at CANEK via V4-253-330 southeast bound.



CATEGORY	A	B	C	D	E
LPV DA		3183/24		325 (400-½)	
LNAV/VNAV DA		3274/50		416 (500-1)	
LNAV MDA	3480/24	622 (700-½)	3480/60 622 (700-1¼)	3480-1½ 622 (700-1½)	3480-1¾ 622 (700-1¾)
CIRCLING	3480-1	609 (700-1)	3480-1¾ 609 (700-1¾)	3480-2 609 (700-2)	3860-3 989 (1000-3)

BOISE, IDAHO  
 Amdt 4 13290

43°34'N-116°13'W

BOISE AIR TERMINAL/GOWEN FIELD (BOI)

# RNAV (GPS) Y RWY 28L