

VORTAC BOI 113.3 Chan 80	APP CRS 098°	Rwy Idg THRE 2824 Apt Elev 2871
----------------------------------------------	------------------------	--------------------------------------------------------

VOR/DME RWY 10R

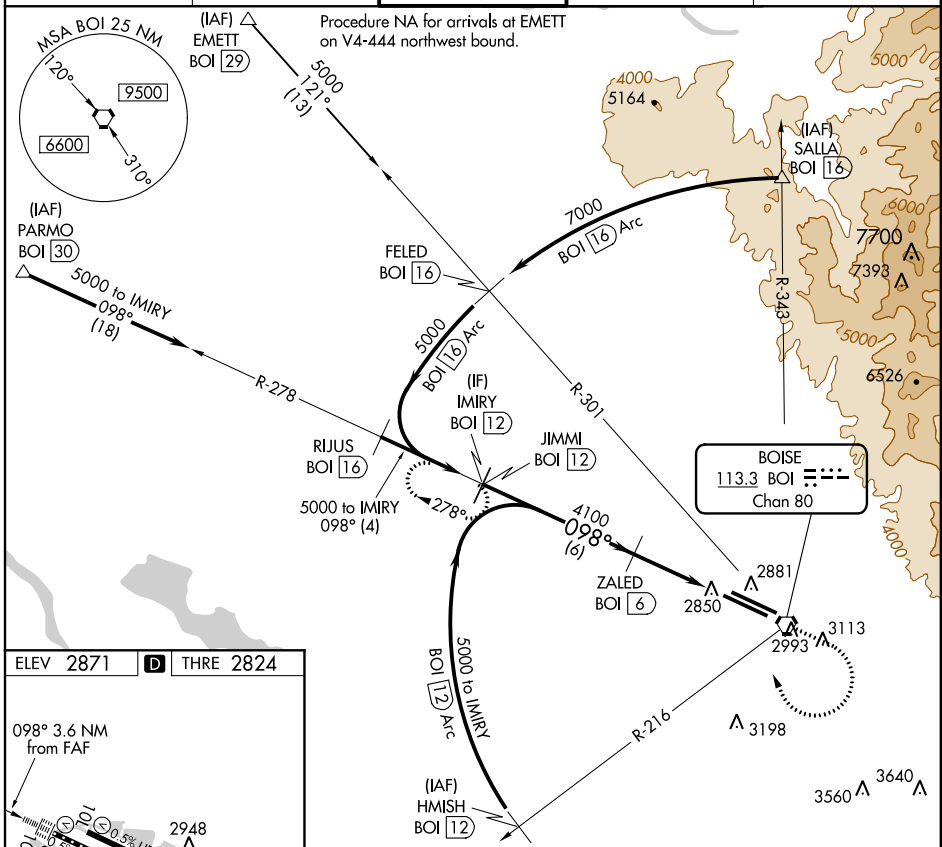
BOISE AIR TERMINAL/GOWEN FIELD (BOI)

For inoperative ALSF-2, increase S-10R all Cats visibility to 1. Circling NA north of Rwy 10L-28R.

ALSF-2

MISSED APPROACH: Climb to 3700 then climbing right turn to 5000 on heading 320° and BOI VORTAC R-278 to JIMMI/BOI 12 DME and hold.

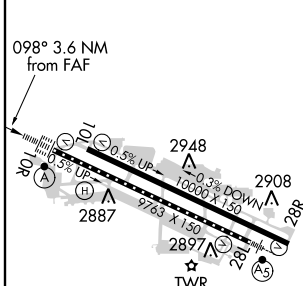
ATIS 123.9 290.4	BIG SKY APP CON 119.6 269.4	BOISE TOWER 118.1 257.8	GND CON 121.7 348.6	CLNC DEL 125.9 323.2
----------------------------	---------------------------------------	-----------------------------------	-------------------------------	--------------------------------



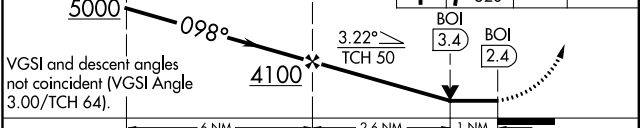
NW-1, 26 JUN 2014 to 24 JUL 2014

NW-1, 26 JUN 2014 to 24 JUL 2014

ELEV 2871	D	THRE 2824
-----------	----------	-----------



Procedure Turn NA	IMIRY BOI 12	ZALED BOI 6	3700	5000	BOI R-278	JIMMI BOI 12
-------------------	--------------	-------------	------	------	-----------	--------------



VGSI and descent angles not coincident (VGSI Angle 3.00/TCH 64).				
CATEGORY	A	B	C	D
S-10R	3200/24	376 (400-½)	3200/40	376 (400-¾)
CIRCLING	3440-1	569 (600-1)	3440-1½ 569 (600-1½)	3440-2 569 (600-2)

REIL Rwy 10L
TDZ/CL Rws 10R and 28L
HIRL Rws 10L-28R and 10R-28L