

VORTAC BOI 113.3 Chan 80	APP CRS 101°	Rwy Idg THRE Apt Elev	10000 2831 2871
--	------------------------	-----------------------------	--

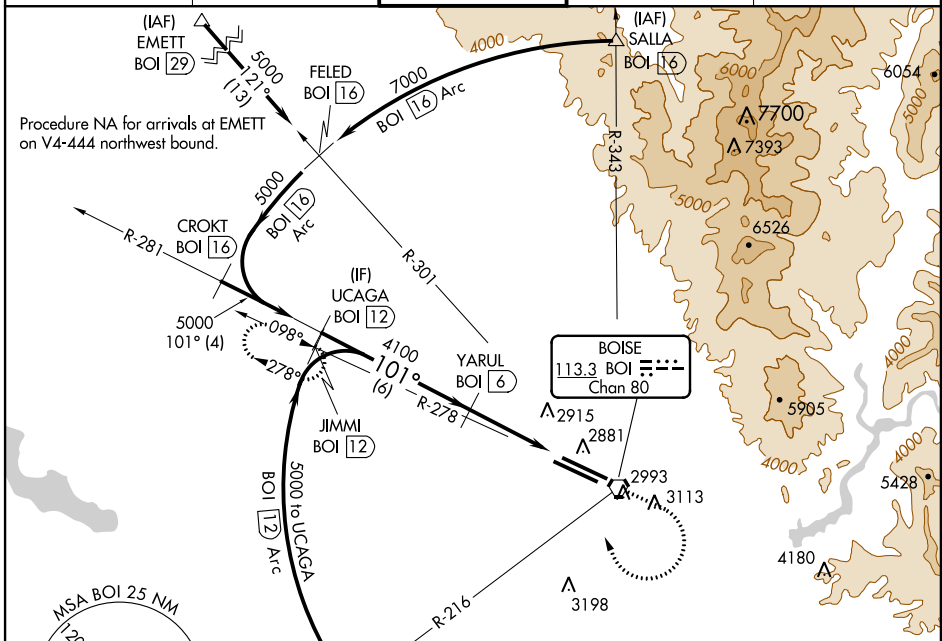
VOR/DME or TACAN RWY 10L

BOISE AIR TERMINAL/GOWEN FIELD (BOI)

⚠ Circling NA north of Rwy 10L-28R.
 Visibility reduction by helicopters NA.

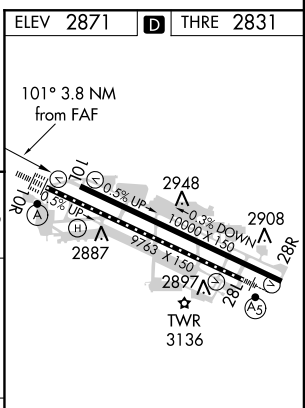
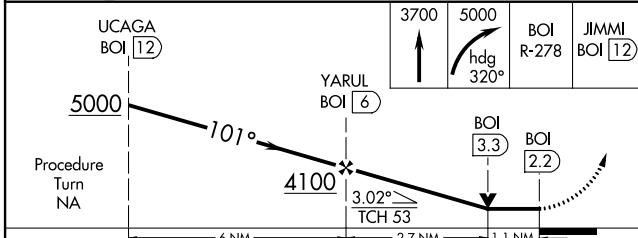
MISSED APPROACH: Climb to 3700 then climbing right turn to 5000 on heading 320° and BOI VORTAC R-278 to JIMMI/BOI 12 DME and hold.

ATIS 123.9 290.4	BIG SKY APP CON 119.6 269.4	BOISE TOWER 118.1 257.8	GND CON 121.7 348.6	CLNC DEL 125.9 323.2
----------------------------	---------------------------------------	-----------------------------------	-------------------------------	--------------------------------



NW-1, 26 JUN 2014 to 24 JUL 2014

NW-1, 26 JUN 2014 to 24 JUL 2014



CATEGORY	A	B	C	D	E
S-10L	3240-1	409 (400-1)	3240-1½ 409 (400-1½)		
CIRCLING	3440-1	569 (600-1)	3440-1½ 569 (600-1½)	3440-2 569 (600-2)	3860-3 989 (1000-3)

REIL Rwy 10L
 TDZ/CL Rwys 10R and 28L
 HIRL Rwys 10L-28R and 10R-28L