

(BLZZR2.BLZZR) 14093

GENERAL EDWARD LAWRENCE LOGAN INTL (BOS)

BLZZR TWO DEPARTURE (RNAV)

SL-58 (FAA)

BOSTON, MASSACHUSETTS

NE-1, 26 JUN 2014 to 24 JUL 2014

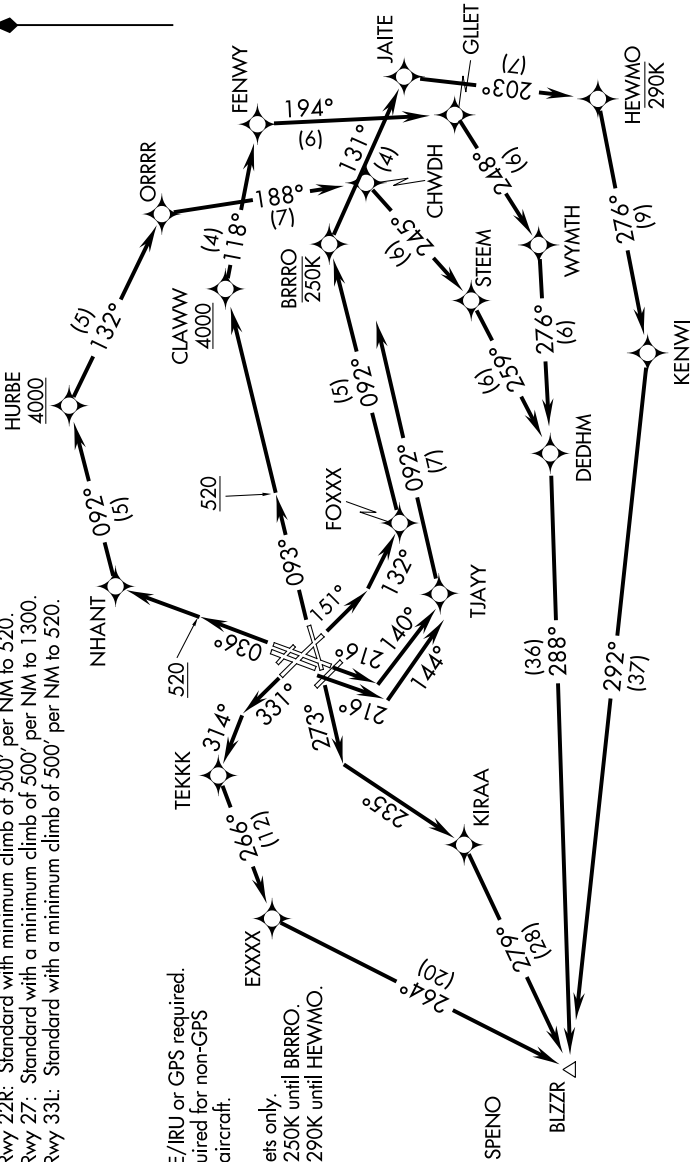
TAKEOFF MINIMUMS:
 Rvys 4L, 14, 15L, 32, 33R: NA-ATC.
 Rvy 4R: Standard with minimum climb of 500' per NM to 3600.
 Rvy 9: Standard with minimum climb of 500' per NM to 4000.
 Rvy 15R: Standard with minimum climb of 500' per NM to 520.
 Rvy 22L: 300-1 with minimum climb of 500' per NM to 520, or standard with minimum climb of 500' per NM to 520 if fewer reports no tall vessels in the departure area.
 Rvy 22R: Standard with minimum climb of 500' per NM to 520.
 Rvy 27: Standard with a minimum climb of 500' per NM to 1300.
 Rvy 33L: Standard with a minimum climb of 500' per NM to 520.

ATIS 127.875
 CLNC DEL 121.65 257.8
 GND CON 121.9
 BOSTON TOWER 128.8 257.8
 BOSTON DEP CON 133.0

NOTE: DME/DME/IRU or GPS required.
 NOTE: Radar required for non-GPS equipped aircraft.
 NOTE: RNAV 1.
 NOTE: For Turbojets only.
 NOTE: At/Below 250K until BRRRO.
 NOTE: At/Below 290K until HEWMO.

NOTE: Departure hdg/RNAV tracks/vectors are predicated on avoiding noise sensitive areas. Flight crew awareness and compliance is important in minimizing noise impacts on surrounding communities.

NOTE: Rvy 15R, 22L, 22R: Do not exceed 210K until 520' MSL.



(NARRATIVE ON FOLLOWING PAGE)

NOTE: Chart not to scale.

BLZZR TWO DEPARTURE (RNAV) (BLZZR2.BLZZR) 14093

BOSTON, MASSACHUSETTS

GENERAL EDWARD LAWRENCE LOGAN INTL (BOS)

NE-1, 26 JUN 2014 to 24 JUL 2014