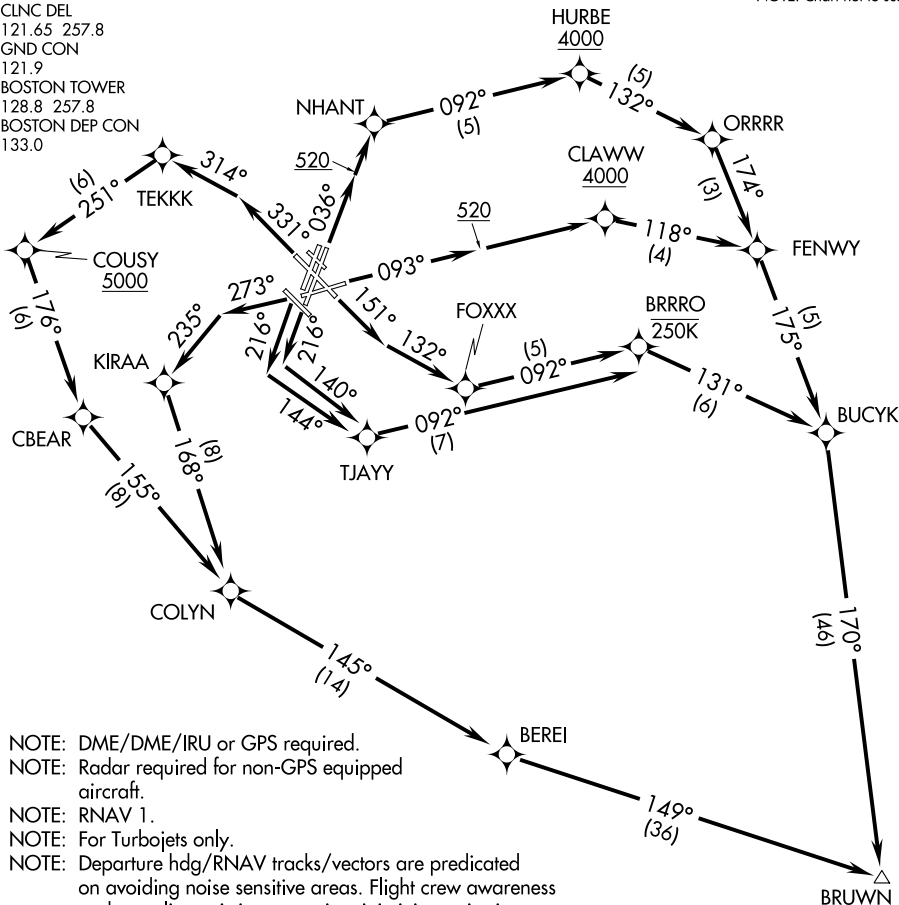


BRUWN THREE DEPARTURE (RNAV) SL-58 (FAA)

BOSTON, MASSACHUSETTS

ATIS 127.875  
CLNC DEL  
121.65 257.8  
GND CON  
121.9  
BOSTON TOWER  
128.8 257.8  
BOSTON DEP CON  
133.0

NOTE: Chart not to scale.



NE-1, 26 JUN 2014 to 24 JUL 2014

NE-1, 26 JUN 2014 to 24 JUL 2014

NOTE: DME/DME/IRU or GPS required.  
NOTE: Radar required for non-GPS equipped aircraft.

NOTE: RNAV 1.

NOTE: For Turbojets only.

NOTE: Departure hdg/RNAV tracks/vectors are predicated on avoiding noise sensitive areas. Flight crew awareness and compliance is important in minimizing noise impacts on surrounding communities.

NOTE: Rwy 15R, 22L, 22R: Do not exceed 210K until 520' MSL.

NOTE: At/Below 250K until BRRRO.

TAKEOFF MINIMUMS:

Rwys 4L, 14, 15L, 32, 33R: NA-ATC.

Rwy 4R: Standard with minimum climb of 500' per NM to 3600.

Rwy 9: Standard with minimum climb of 500' per NM to 4000.

Rwy 15R: Standard with minimum climb of 500' per NM to 520.

Rwy 22L: 300-1 with minimum climb of 500' per NM to 520, or Standard with minimum climb of 500' per NM to 520 if tower reports no tall vessels in the departure area.

Rwy 22R: Standard with minimum climb of 500' per NM to 520.

Rwy 27: Standard with a minimum climb of 500' per NM to 1300.

Rwy 33L: Standard with a minimum climb of 500' per NM to 4900.

NANTUCKET  
ACK

(NARRATIVE ON FOLLOWING PAGE)

BRUWN THREE DEPARTURE (RNAV)

BOSTON, MASSACHUSETTS