

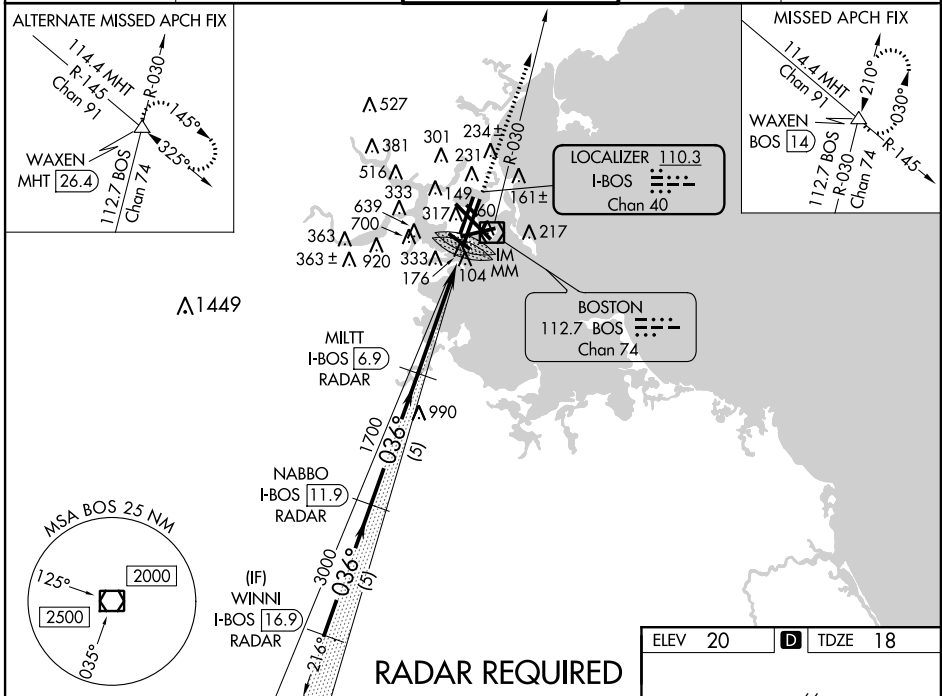
LOC/DME I-BOS 110.3 Chan 40	APP CRS 036°	Rwy Idg 8851 TDZE 18 Apt Elev 20
---	------------------------	---

ILS RWY 4R (CAT II & III)

GENERAL EDWARD LAWRENCE LOGAN INTL (BOS)

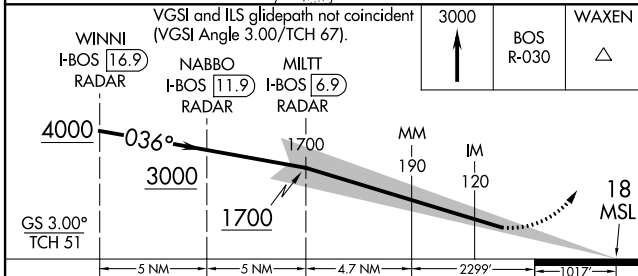
<p>▼ When control tower reports tall vessels in approach area, procedure NA. ▲ CAT II: RVR 1000 authorized with specific OPSPEC, MPSEC, or LOA approval and use of autoland or HUD to touchdown.</p>	<p>ALSF-2 </p>	<p>MISSED APPROACH: Climb to 3000 on BOS VOR/DME R-030 to WAXEN INT/ BOS 14 DME and hold.</p>
---	---------------------	---

<p>ATIS ARR 135.0 DEP 127.875</p>	<p>BOSTON APP CON 120.6 263.1</p>	<p>BOSTON TOWER 128.8 257.8</p>	<p>GND CON 121.9</p>	<p>CLNC DEL 121.65 257.8</p>
---	--	--	---------------------------------	---

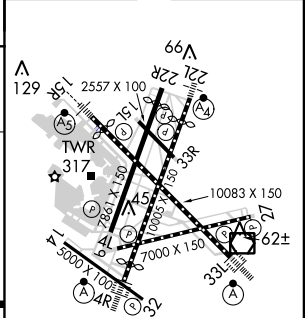


NE-1, 26 JUN 2014 to 24 JUL 2014

NE-1, 26 JUN 2014 to 24 JUL 2014



ELEV 20	D	TDZE 18
---------	----------	---------



CATEGORY	A	B	C	D
S-ILS 4R	CAT II RA 99/12 100 DA 118			
S-ILS 4R	CAT IIIa RVR 07			
S-ILS 4R	CAT IIIb RVR 06			
S-ILS 4R	CAT IIIc NA			

TDZ/CL Rwys
4R, 15R and 33L
 REIL Rwys 4L, 27 and 32
 MIRL Rwy 15L-33R
 HIRL Rwys 4L-22R, 4R-22L,
 14-32, 15R-33L and 9-27

CATEGORY II & III ILS - SPECIAL AIRCREW & AIRCRAFT CERTIFICATION REQUIRED