

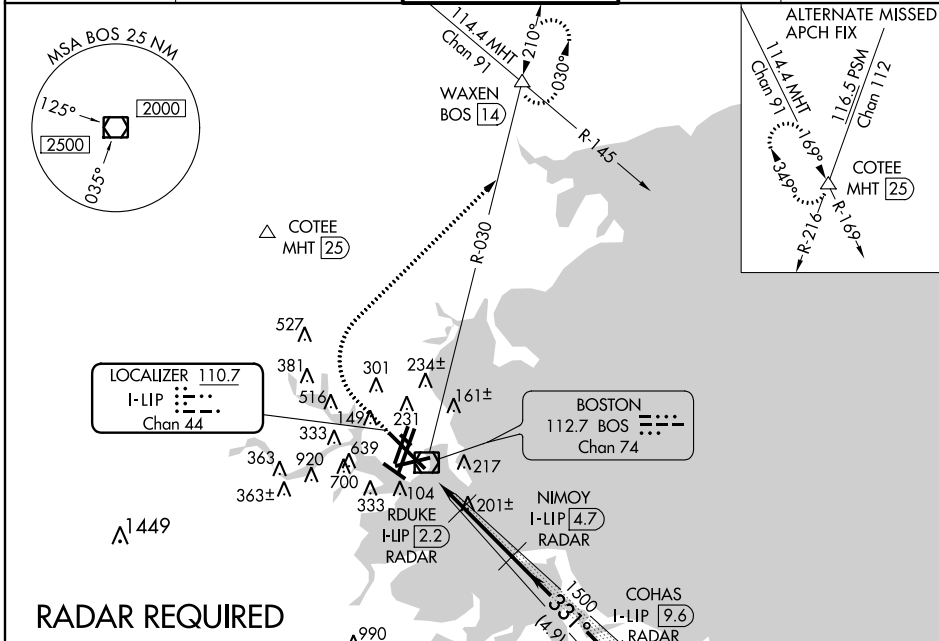
LOC/DME I-LIP	APP CRS	Rwy Idg	<b>10083</b>
<b>110.7</b>	<b>331°</b>	TDZE	<b>16</b>
Chan <b>44</b>		Apt Elev	<b>20</b>

# ILS or LOC RWY 33L

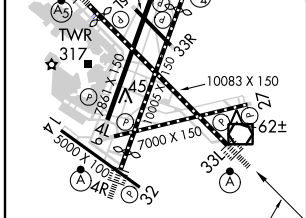
GENERAL EDWARD LAWRENCE LOGAN INTL (BOS)

<b>⚠</b> DME or Radar required. Circling NA for Cats C and D west of Rwy 4L and 15R. Circling NA to Rwy 14.	ALSF-2 	MISSED APPROACH: Climb to 1500 then climbing right turn to 3000 on BOS VOR/DME R-030 to WAXEN INT/BOS 14 DME and hold.
---	------------	--

ATIS ARR <b>135.0</b> DEP <b>127.875</b>	BOSTON APP CON <b>120.6 263.1</b>	BOSTON TOWER <b>128.8 257.8</b>	GND CON <b>121.9</b>	CLNC DEL <b>121.65 257.8</b>
--	--------------------------------------	------------------------------------	-------------------------	---------------------------------



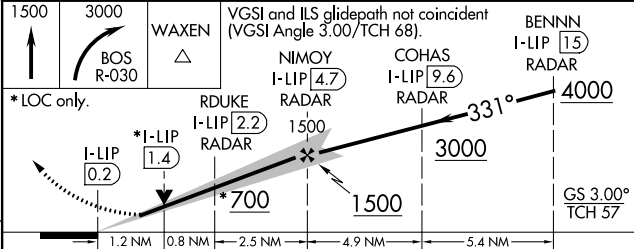
ELEV <b>20</b>	<b>D</b>	TDZE <b>16</b>
----------------	----------	----------------



TDZ/CL Rwy 4R, 15R and 33L  
REIL Rwy 4L, 27 and 32  
MIRL Rwy 15L-33R  
HIRL Rwy 4L-22R, 4R-22L, from FAF  
14-32, 15R-33L and 9-27

FAF to MAP 4.5 NM

Knots	60	90	120	150	180
Min:Sec	4:30	3:00	2:15	1:48	1:30



CATEGORY	A	B	C	D
S-ILS 33L	216/18 200 (200-½)			
S-LOC 33L	460/24	444 (500-½)	460/45	444 (500-¾)
CIRCLING	940-1¼ 920 (1000-1¼)	1060-1½ 1040 (1100-½)	640-1¾ 620 (700-¾)	640-2 620 (700-2)

NE-1, 26 JUN 2014 to 24 JUL 2014

NE-1, 26 JUN 2014 to 24 JUL 2014