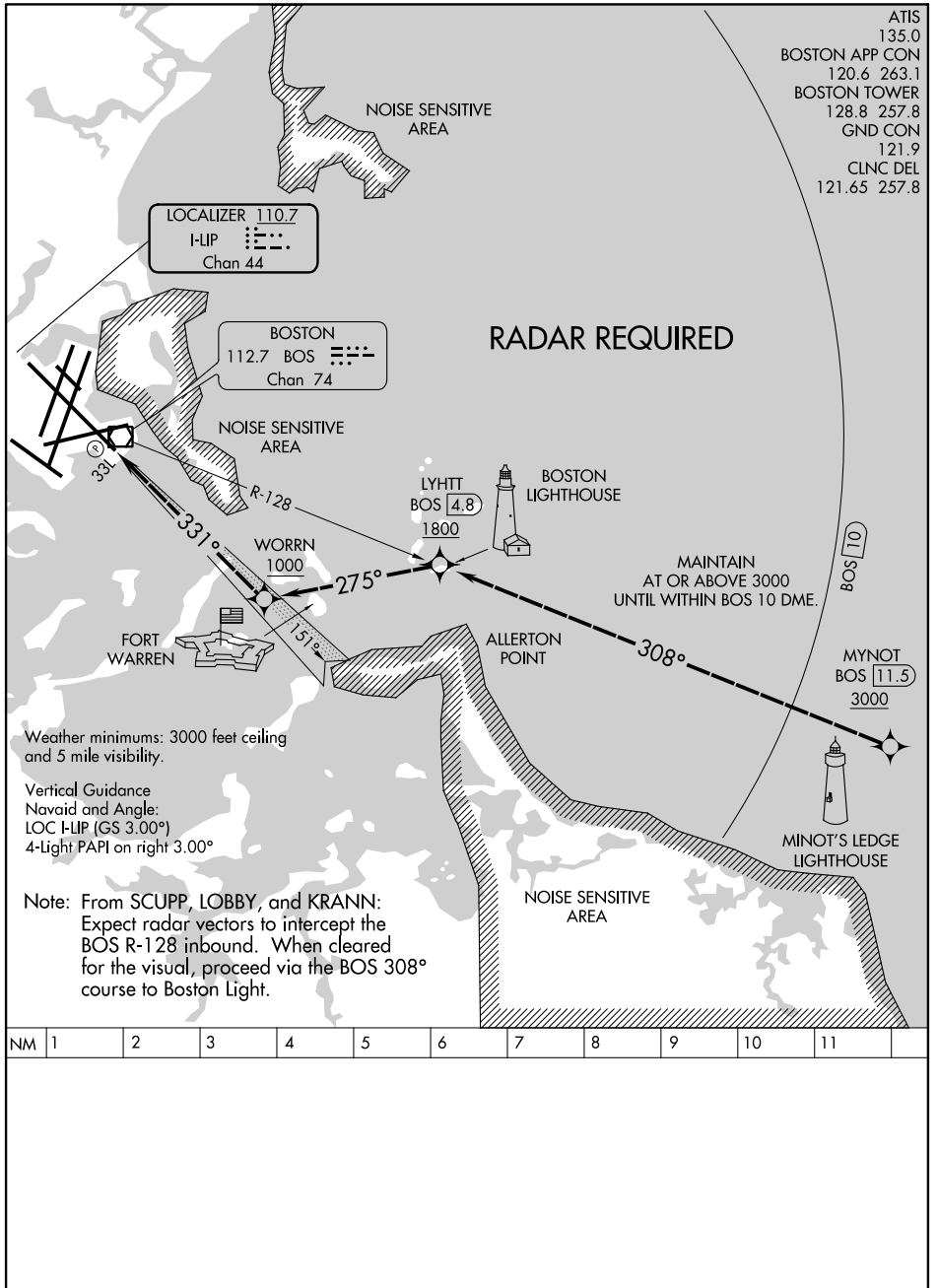


LIGHT VISUAL RWY 33L

GENERAL EDWARD LAWRENCE LOGAN INTL (BOS)
AL-58 (FAA) BOSTON, MASSACHUSETTS



NE-1, 26 JUN 2014 to 24 JUL 2014

NE-1, 26 JUN 2014 to 24 JUL 2014

LIGHT VISUAL RWY 33L

BOSTON, MASSACHUSETTS
GENERAL EDWARD LAWRENCE LOGAN INTL (BOS)
42°22'N-71°00'W