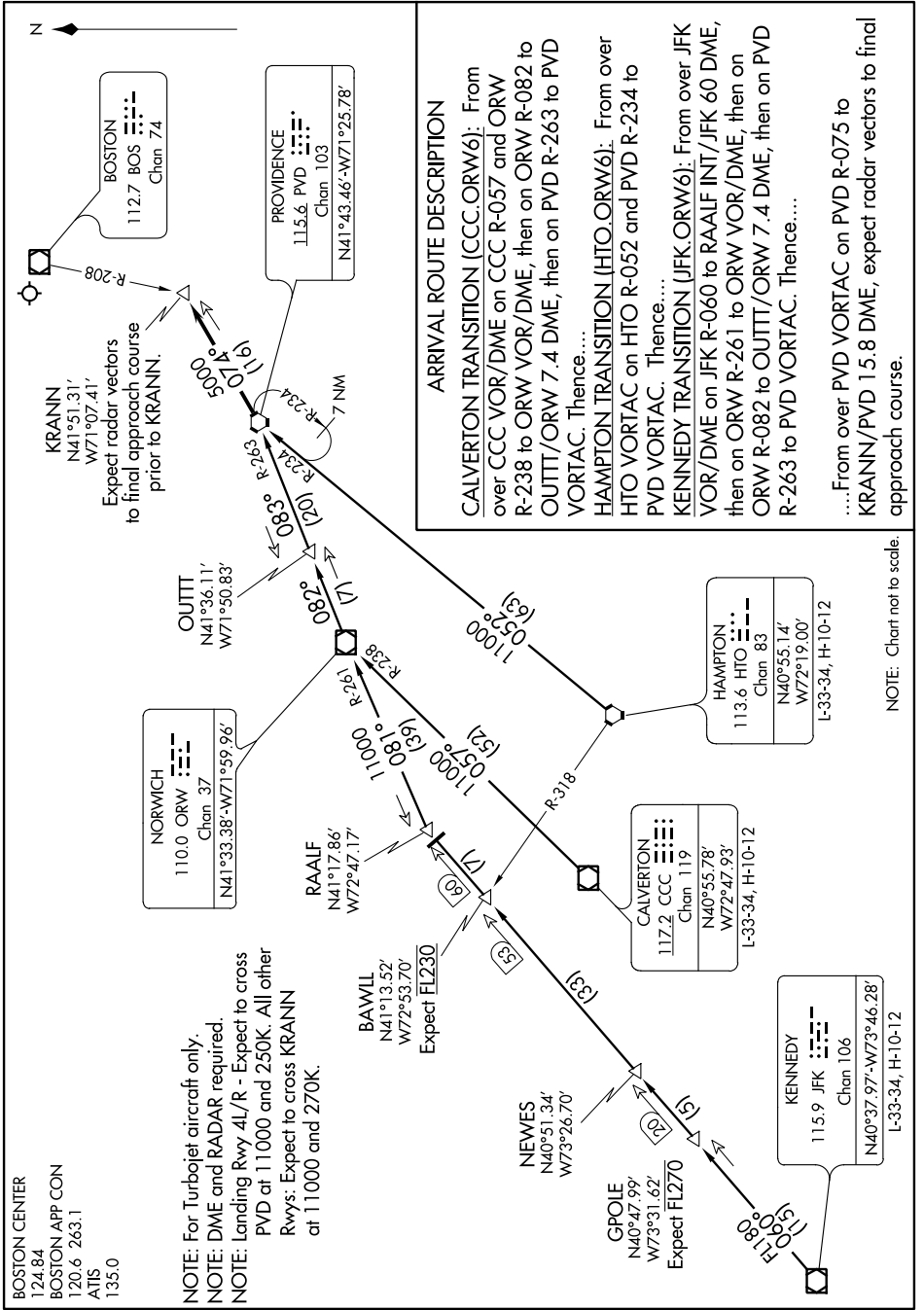


NORWICH SIX ARRIVAL

NE-1, 26 JUN 2014 to 24 JUL 2014



BOSTON CENTER
124.84
BOSTON APP CON
120.6 263.1
ATIS
135.0

NOTE: For Turbojet aircraft only.
NOTE: DME and RADAR required.
NOTE: Landing Rwy 4L/R - Expect to cross PVD at 11000 and 250K. All other Rwy's: Expect to cross KRANN at 11000 and 270K.

ARRIVAL ROUTE DESCRIPTION

CALVERTON TRANSITION (CCC.ORW6): From over CCC VOR/DME on CCC R-057 and ORW R-238 to ORW VOR/DME, then on ORW R-082 to OUITT/ORW 7.4 DME, then on PVD R-263 to PVD VORTAC. Thence....

HAMPTON TRANSITION (HTO.ORW6): From over HTO VORTAC on HTO R-052 and PVD R-234 to PVD VORTAC. Thence....

KENNEDY TRANSITION (JFK.ORW6): From over JFK VOR/DME on JFK R-060 to RAALF INT/JFK 60 DME, then on ORW R-261 to ORW VOR/DME, then on ORW R-082 to OUITT/ORW 7.4 DME, then on PVD R-263 to PVD VORTAC. Thence....

...From over PVD VORTAC on PVD R-075 to KRANN/PVD 15.8 DME, expect radar vectors to final approach course.

NOTE: Chart not to scale.

NORWICH SIX ARRIVAL

NE-1, 26 JUN 2014 to 24 JUL 2014