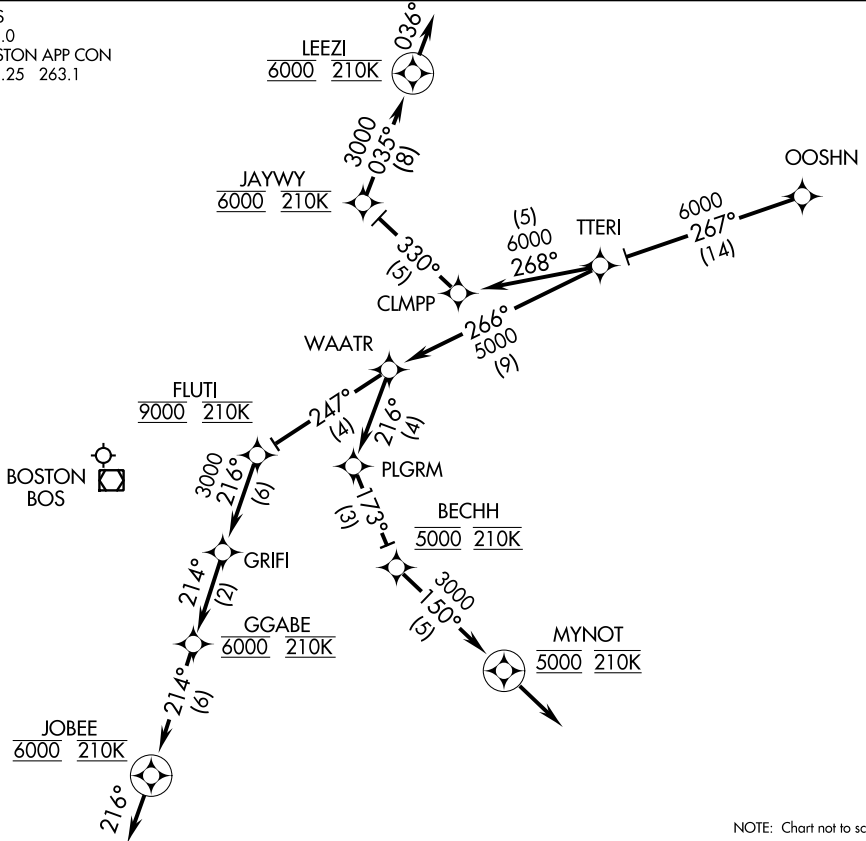


OOSH.N TWO ARRIVAL (RNAV) Arrival Routes

ATIS
135.0
BOSTON APP CON
118.25 263.1



NOTE: Chart not to scale.

ARRIVAL ROUTE DESCRIPTION

From over OOSH.N on track 267° to TTERI, thence. . . .

Landing Rwy 4L, 15R, 27, 32: From over TTERI on track 266°, expect radar vectors to final approach course.

Landing Rwy 4R: From over TTERI on track 266° to WAATR, then on track 247° to cross FLUTI at 9000 and 210K, then on track 216° to GRIFI, then on track 214° to cross GGABE at 6000 and 210K, then on track 214° to cross JOBBE at 6000 and 210K, then on track 216°, expect radar vectors to final approach course.

Landing Rwy 22R: From over TTERI on track 268°, expect radar vectors to final approach course.

Landing Rwy 22L: From over TTERI on track 268° to CLMPP then on track 330° to cross JAYWY at 6000 and 210K, then on track 035° to cross LEEZI at 6000 and 210K, then on track 036°, expect radar vectors to final approach course.

Landing Rwy 33L: From over TTERI on track 266° to WAATR, then on track 216° to PLGRM, then on track 173° to cross BECHH at 5000 and 210K, then on track 150° to cross MYNOT at 5000 and 210K, then on track 150°, expect radar vectors to final approach course.

NE-1, 26 JUN 2014 to 24 JUL 2014

NE-1, 26 JUN 2014 to 24 JUL 2014