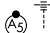


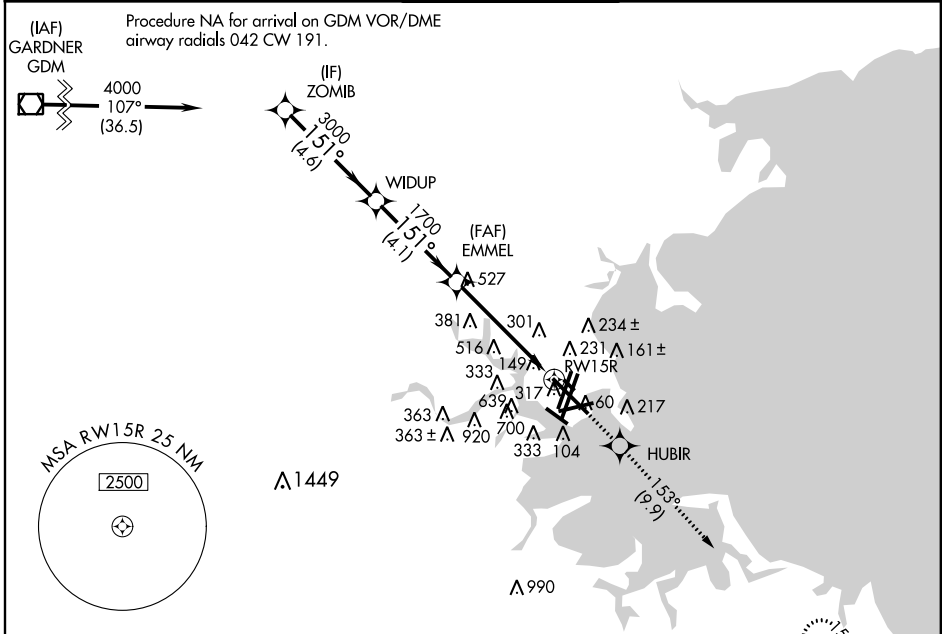
WAAS CH <b>42925</b> <b>W15A</b>	APP CRS <b>151°</b>	Rwy ldg <b>9202</b> TDZE <b>17</b> Apt Elev <b>20</b>
--	------------------------	---

# RNAV (GPS) RWY 15R

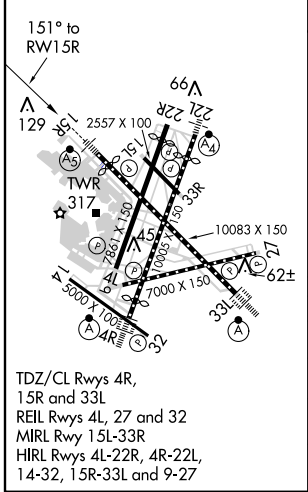
GENERAL EDWARD LAWRENCE LOGAN INTL (BOS)

⚠ DME/DME RNP-0.3 NA. Circling NA to Rwy 14. Circling NA for Cats C and D west of Rwys 4L and 15R. For inoperative MALSR, increase LNAV Cats C and D visibility to 1¾ mile. For uncompensated Baro-VNAV systems, LNAV/VNAV NA below -13°C (9°F) or above 43°C (109°F).	MALSR 	MISSED APPROACH: Climb to 3000 direct HUBIR and on track 153° to CELTS and hold.
	(IAS) Procedure NA for arrival on GDM VOR/DME airway radials 042 CW 191.	

ATIS ARR DEP <b>135.0</b> <b>127.875</b>	BOSTON APP CON <b>120.6 263.1</b>	BOSTON TOWER <b>128.8 257.8</b>	GND CON <b>121.9</b>	CLNC DEL <b>121.65 257.8</b>
--	--------------------------------------	------------------------------------	-------------------------	---------------------------------



ELEV 20	<b>D</b>	TDZE 17
---------	----------	---------



VGSi and RNAV glidepath not coincident (VGSi Angle 3.00/TCH 71).			
ZOMB	WIDUP	EMMEL	CELTS
4000	1700	1700	tr 153°
*LNNAV only.			
GS 3.00° TCH 60			
4.6 NM    4.1 NM    3.4 NM    1.7 NM			
CATEGORY	A	B	C
LPV DA	217/24		
LNAV/ VNAV DA	567-1¾		
LNAV MDA	620/24	603 (600-½)	620-1¾
CIRCLING	940-1¼ 920 (1000-1¼)	1060-1½ 1040 (1100-½)	640-1¾ 620 (700-1¾)

NE-1, 26 JUN 2014 to 24 JUL 2014

NE-1, 26 JUN 2014 to 24 JUL 2014