

WAAS CH <b>45925</b> <b>W22A</b>	APP CRS <b>216°</b>	Rwy Idg TDZE <b>16</b> Apt Elev <b>20</b>	<b>8806</b>
--	------------------------	---	-------------

# RNAV (GPS) RWY 22L

GENERAL EDWARD LAWRENCE LOGAN INTL (BOS)

<p><b>▼</b> DME/DME RNP-0.3 NA. Circling NA to Rwy 14. Circling NA for Cats C and D west of Rwys 4L and 15R. For inoperative MALSF, increase LNAV/VNAV Cat D visibility to RVR 6000 and LNAV Cat D visibility to 1½ mile. For uncompensated Baro-VNAV systems, LNAV/VNAV NA below -1.3°C (9°F) or above 43°C (109°F).</p>	<p><b>▲</b> MALSF</p>	<p>MISSED APPROACH: Climb to 3000 direct WINNI and hold.</p>
---	-----------------------	--

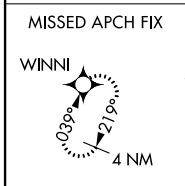
<p>ARR ATIS <b>135.0</b> DEP <b>127.875</b></p>	<p>BOSTON APP CON <b>120.6 263.1</b></p>	<p>BOSTON TOWER <b>128.8 257.8</b></p>	<p>GND CON <b>121.9</b></p>	<p>CLNC DEL <b>121.65 257.8</b></p>
---	--	--	---------------------------------	---

## RADAR REQUIRED

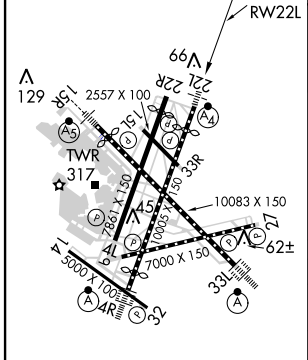


NE-1, 26 JUN 2014 to 24 JUL 2014

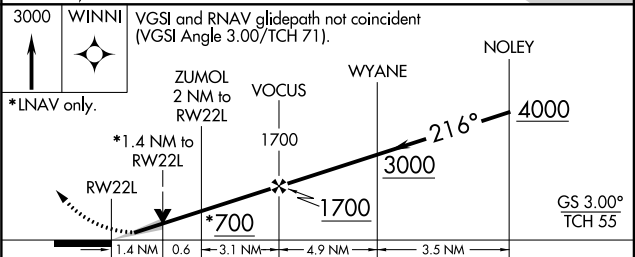
NE-1, 26 JUN 2014 to 24 JUL 2014



ELEV <b>20</b>	<b>D</b>	TDZE <b>16</b>
----------------	----------	----------------



TDZ/CL Rwys 4R, 15R and 33L  
REIL Rwys 4L, 27 and 32  
MIRL Rwy 15L-33R  
HIRL Rwys 4L-22R, 4R-22L,  
14-32, 15R-33L and 9-27



CATEGORY	A	B	C	D
LPV DA		216/40	200 (200-¾)	
LNAV/VNAV DA		392/50	376 (400-1)	
LNAV MDA	540/40	524 (600-¾)	540-1¼	524 (600-1¼)
CIRCLING	940-1¼ 920 (1000-1¼)	1060-1½ 1040 (1100-½)	640-1¾ 620 (700-1¾)	640-2 620 (700-2)