

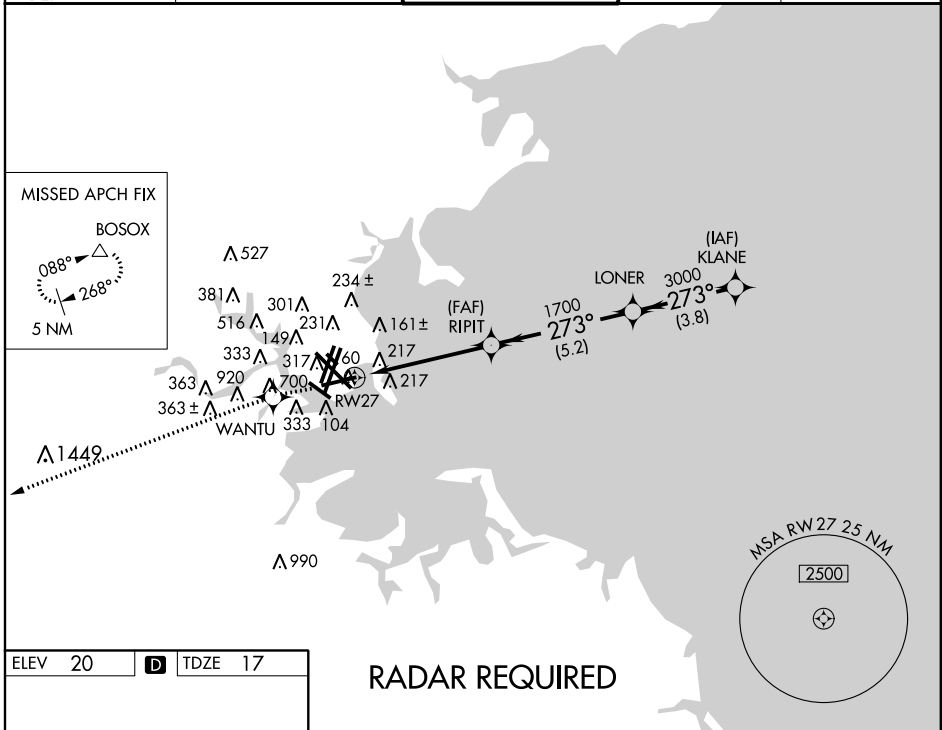
APP CRS	Rwy Idg	7000
273°	TDZE	17
	Apt Elev	20

RNAV (GPS) RWY 27

GENERAL EDWARD LAWRENCE LOGAN INTL (BOS)

	MISSED APPROACH: Climb to 3000 direct WANTU WP and 267° track to BOSOX WP and hold.
--	---

ATIS	BOSTON APP CON	BOSTON TOWER	GND CON	CLNC DEL
ARR 135.0	120.6 263.1	128.8 257.8	121.9	121.65 257.8
DEP 127.875				

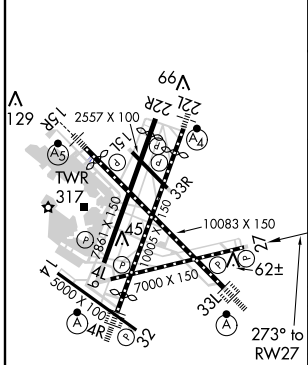


NE-1, 26 JUN 2014 to 24 JUL 2014

NE-1, 26 JUN 2014 to 24 JUL 2014

ELEV 20	D	TDZE 17
---------	----------	---------

RADAR REQUIRED



TDZ/CL Rwys 4R, 15R and 33L
 REIL Rwys 4L, 27 and 32
 MIRL Rwy 15L-33R
 HIRL Rwys 4L-22R, 4R-22L, 14-32, 15R-33L and 9-27

3000	↑	WANTU	tr 267°	BOSOX	△	VGSi and RNAV glidepath not coincident (VGSi Angle 3.00/TCH 71).	KLANE
*LNAV only		*1.7 NM to RWY27		RIPIT	LONER		4000
RWY27		1.7 NM		3.3 NM	5.2 NM	3.8 NM	GS 3.00° TCH 57
3000	1700		273°		3000		4000
CATEGORY	A		B		C		D
GLS PA DA	NA						
LNAV/VNAV DA	504-1 3/4 487 (500-1 3/4)						
LNAV MDA	640-1		623 (700-1)		640-1 3/4		640-2
	920 (1000-1 1/4)		1040 (1100-1 1/2)		623 (700-1 3/4)		623 (700-2)
CIRCLING	940-1 1/4		1060-1 1/2		640-1 3/4		640-2
	920 (1000-1 1/4)		1040 (1100-1 1/2)		620 (700-1 3/4)		620 (700-2)