

WAAS CH 69525 W33A	APP CRS 331°	Rwy ldg 10083 TDZE 16 Apt Elev 20
--	------------------------	--

RNAV (GPS) RWY 33L

GENERAL EDWARD LAWRENCE LOGAN INTL (BOS)

DME/DME RNP-0.3 NA. Circling NA to Rwy 14. Circling NA for Cats C and D west of Rwys 4L and 15R. For uncompensated Baro-VNAV systems, LNAV/VNAV NA below -14°C (7°F) or above 54°C (130°F).	ALSIF-2	MISSED APPROACH: Climb to 600 then climbing right turn to 3000 direct WAXEN and hold.

ATIS ARR 135.0 DEP 127.875	BOSTON APP CON 120.6 263.1	BOSTON TOWER 128.8 257.8	GND CON 121.9	CLNC DEL 121.65 257.8
--	--------------------------------------	------------------------------------	-------------------------	---------------------------------

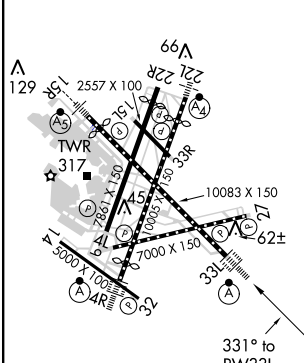
RADAR REQUIRED



NE-1, 26 JUN 2014 to 24 JUL 2014

NE-1, 26 JUN 2014 to 24 JUL 2014

ELEV 20	D	TDZE 16
---------	----------	---------



TDZ/CL Rwys 4R, 15R and 33L
 REIL Rwys 4L, 27 and 32
 MIRL Rwy 15L-33R
 HIRL Rwys 4L-22R, 4R-22L, 14-32, 15R-33L and 9-27

600	3000	WAXEN	VGSI and RNAV glidepath not coincident (VGSI Angle 3.00/TCH 68).	BENNN
*LNAV only		*1.1 NM to RDUKE RW33L	2 NM to RW33L	
RW33L		700	1500	3000
1.1 NM		0.9 NM	2.5 NM	4.9 NM
				5.4 NM

CATEGORY	A	B	C	D
LPV DA		216/24	200 (200-½)	
LNAV/ VNAV DA		324/24	308 (400-½)	
LNAV MDA	440/24	424(500-½)	440/40	424 (500-¾)
CIRCLING	940-1¼ 920 (1000-1¼)	1060-1½ 1040 (1100-1½)	640-1¾ 620 (700-1¾)	640-2 620 (700-2)