

REVSS TWO DEPARTURE (RNAV)

SL-58 (FAA)

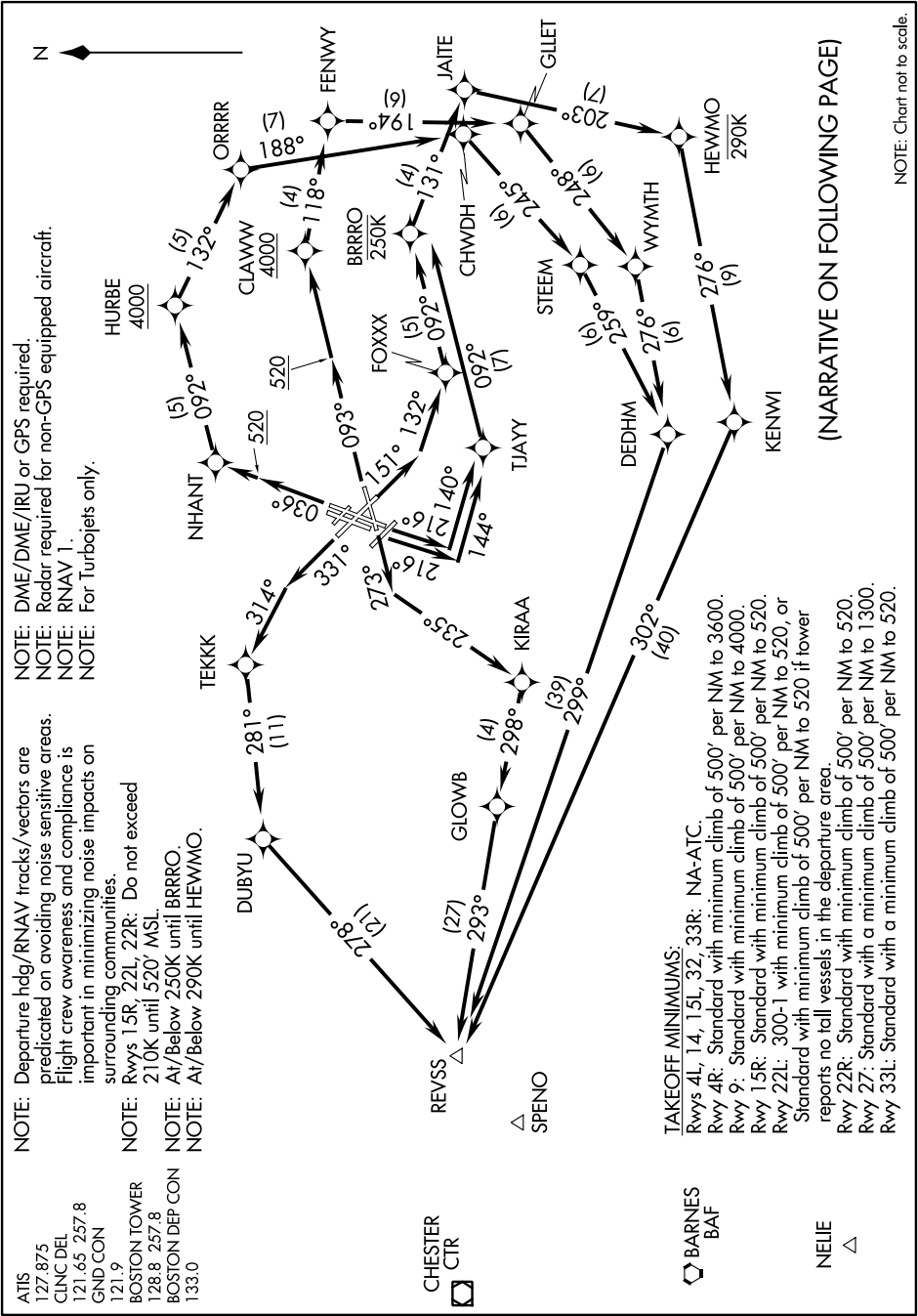
BOSTON, MASSACHUSETTS

NE-1, 26 JUN 2014 to 24 JUL 2014

ATIS 127.875
 CLNC DEL 121.65 257.8
 GND CON 121.9
 BOSTON TOWER 128.8 257.8
 BOSTON DEP CON 133.0

NOTE: Departure hdg/RNAV tracks/vectors are predicated on avoiding noise sensitive areas. Flight crew awareness and compliance is important in minimizing noise impacts on surrounding communities.
 NOTE: Rwy 15R, 22L, 22R: Do not exceed 210K until 520' MSL.
 NOTE: At/Below 250K until BRRRO.
 NOTE: At/Below 290K until HEWMO.

NOTE: DME/DME/IRU or GPS required.
 NOTE: Radar required for non-GPS equipped aircraft.
 NOTE: RNAV 1.
 NOTE: For Turbojets only.



(NARRATIVE ON FOLLOWING PAGE)

NOTE: Chart not to scale.

NE-1, 26 JUN 2014 to 24 JUL 2014

REVSS TWO DEPARTURE (RNAV)