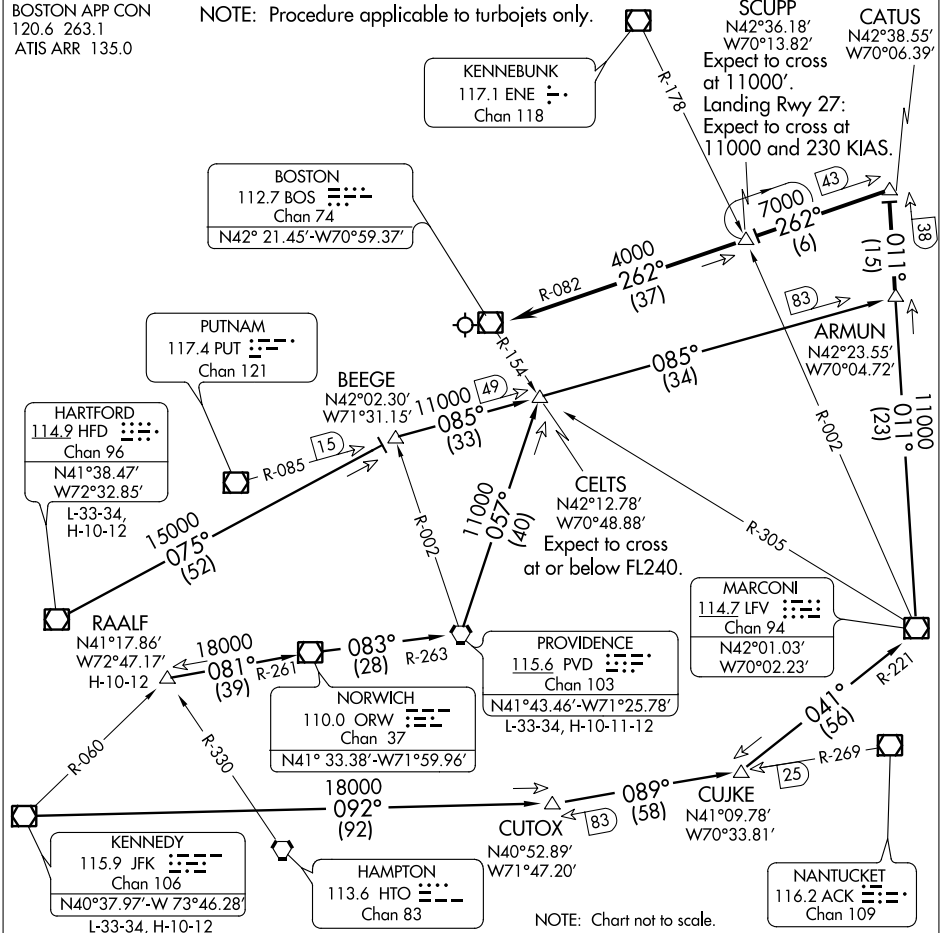


# SCUPP FOUR ARRIVAL

BOSTON APP CON  
120.6 263.1  
ATIS ARR 135.0

NOTE: Procedure applicable to turbojets only.



NE-1, 26 JUN 2014 to 24 JUL 2014

NE-1, 26 JUN 2014 to 24 JUL 2014

NOTE: Chart not to scale.

**HARTFORD TRANSITION (HFD.SCUPP4):** From over HFD VOR/DME via HFD R-075 to BEEGE INT, then via PUT R-085 to ARMUN INT. Thence....

**KENNEDY TRANSITION (JFK.SCUPP4):** From over JFK VOR/DME via JFK R-092 to CUTOX INT, then via ACK R-269 to CUJKE INT, then via LFV R-221 to LFV VOR/DME, then via LFV R-011 to ARMUN INT. Thence....

**PROVIDENCE TRANSITION (PVD.SCUPP4):** From over the PVD VORTAC via PVD R-057 to CELTS INT, then via PUT R-085 to ARMUN INT. Thence....

**RAALF TRANSITION (RAALF.SCUPP4):** From over RAALF INT via ORW R-261 to ORW VOR/DME, then via PVD R-263 to PVD VORTAC, then via PVD R-057 to CELTS INT, then via PUT R-085 to ARMUN INT. Thence....

....From over ARMUN INT via LFV VOR/DME R-011 to CATUS INT, then via BOS VOR/DME R-082 to SCUPP INT, then via BOS R-082 to BOS VOR/DME. Expect radar vectors to final approach course prior to BOS VOR/DME.

# SCUPP FOUR ARRIVAL