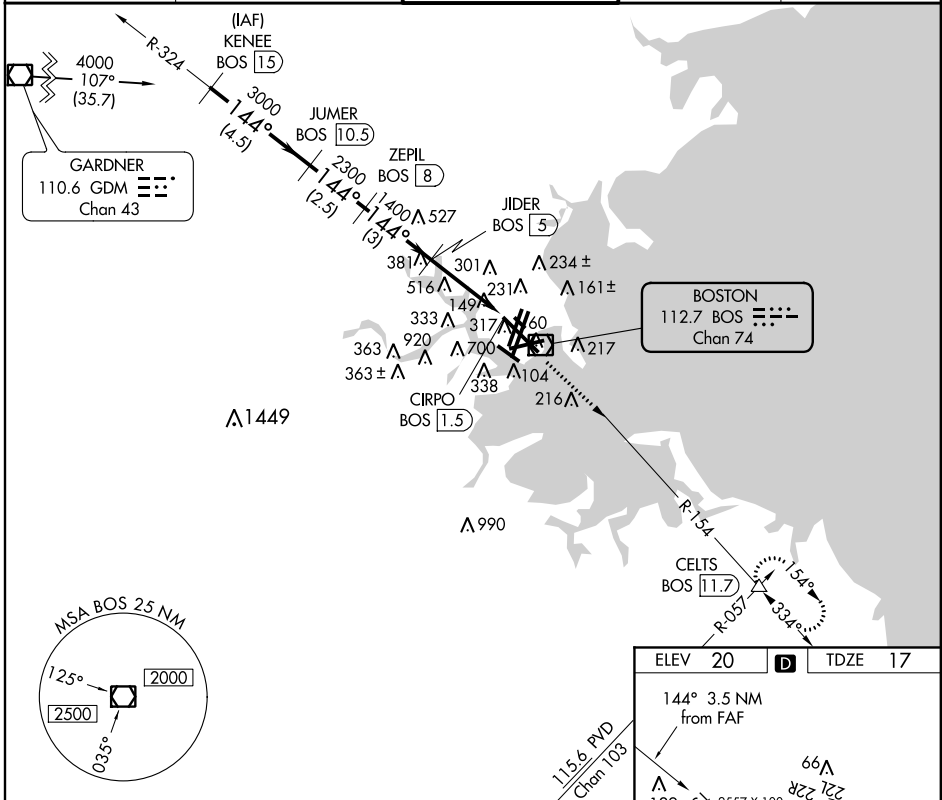


VOR/DME BOS 112.7 Chan 74	APP CRS 144°	Rwy Ldg 9202 TDZE 17 Apt Elev 20
---	------------------------	---

VOR/DME RWY 15R

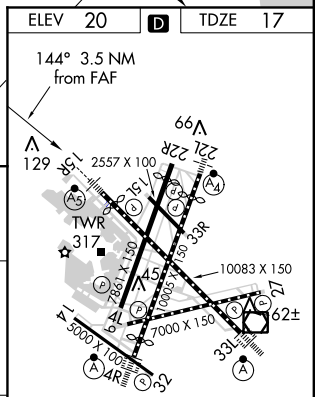
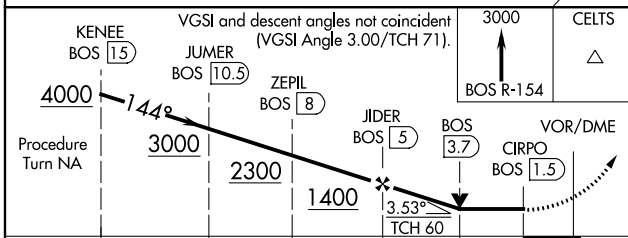
GENERAL EDWARD LAWRENCE LOGAN INTL (BOS)

<p>⚠ For inoperative MALS, increase S-15R Cat A visibility to RVR 5000 ⚠ Cat C and D Circling NA west of Rwy 4L-15R. Circling to Rwy 14 NA.</p>		<p>MALS </p>	<p>MISSED APPROACH: Climb to 3000 via BOS R-154 to CELTS INT/BOS 11.7 DME and hold.</p>	
<p>ATIS ARR 135.0 DEP 127.875</p>	<p>BOSTON APP CON 120.6 263.1</p>	<p>BOSTON TOWER 128.8 257.8</p>	<p>GND CON 121.9</p>	<p>CLNC DEL 121.65 257.8</p>



NE-1, 26 JUN 2014 to 24 JUL 2014

NE-1, 26 JUN 2014 to 24 JUL 2014



CATEGORY	A	B	C	D
S-15R	780-40 763 (800-3/4)	780-1 3/4 763 (800-1 3/4)	780-2 763 (800-2)	780-2 1/2 763 (800-2 1/2)
CIRCLING	960-1 1/4 940 (1000-1 1/4)	1060-1 1/2 1040 (1100-1 1/2)	780-2 1/4 760 (800-2 1/4)	780-2 1/2 760 (800-2 1/2)

TDZ/CL Rwy 4R, 15R and 33L
 REIL Rwy 4L, 27, and 32
 MIRL Rwy 15L-33R
 HIRL Rwy 4L-22R, 4R-22L,
 14-32, 15R-33L, and 9-27.