

# WYLYY ONE DEPARTURE (RNAV)

SL-58 (FAA)

BOSTON, MASSACHUSETTS

NE-1, 26 JUN 2014 to 24 JUL 2014

**DEPARTURE ROUTE DESCRIPTION**

**TAKEOFF RWY 27:** Climb heading 273° to intercept course 235° to cross WYLYY at or above 2300, then on depicted route to CYOTI, thence. . . .

. . . .expect vectors to assigned fix/NAVAID (see notes). Maintain 5000 or lower assigned altitude. Expect clearance to filed altitude/flight level within ten (10) minutes after departure.

**NOTE:** DME/DME/IRU or GPS required. **NOTE:** RNAV 1. **NOTE:** For turbojets only. Radar required. **NOTE:** ATC assigned. Do not file.

**NOTE:** Departure hdg/RNAV tracks/vectors are predicated on avoiding noise sensitive areas. Flight crew awareness and compliance is important in minimizing noise impacts on surrounding communities.

**NOTE:** Departures assigned routing via LBSTA, PSM VOR/DME, MHT VOR/DME, HYLIND, or REVSS direct SPENO; BLZZR direct ONEPS; PATSS, GLYDE or BOSOX expect radar vectors to the right to assigned route/fix.

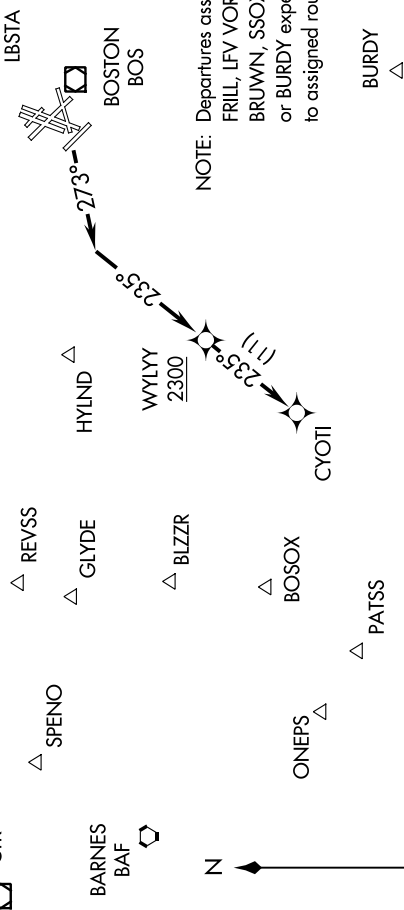
**BOSTON TOWER**  
127.875  
**CINC DEL**  
121.65 257.8  
**GND CON**  
121.9

**BOSTON DEP CON**  
128.8 257.8  
133.0 343.6

**CHESTER**  
CTR

**MANCHESTER**  
MHT

**PEASE**  
PSM



**NOTE:** Departures assigned routing via CELTK, FRILL, LFV VOR/DME, ACK VOR/DME, BRUWN, SSOXS, LUCOS, SEY VOR/DME, or BURDY expect radar vectors to the left to assigned route/fix.

**TAKEOFF MINIMUMS:**  
Rwy 4L, 4R, 9, 14, 15L, 15R, 22L, 22R, 32, 33L, 33R: NA-ATC.  
Rwy 27: Standard with minimum climb of 474' per NM to 2300.

**TAKEOFF OBSTACLE NOTES:**  
Rwy 27: Light pole and rod beginning 1690' from DER, 759' right of centerline, up to 60' AGL/100' MSL.

NOTE: Chart not to scale.

# WYLYY ONE DEPARTURE (RNAV)

BOSTON, MASSACHUSETTS

GENERAL EDWARD LAWRENCE LOGAN INTL (BOS)

NE-1, 26 JUN 2014 to 24 JUL 2014