

BUFFALO, WYOMING

AL-5705 (FAA)

VOR/DME RWY 31

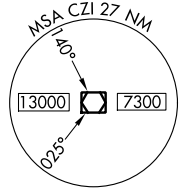
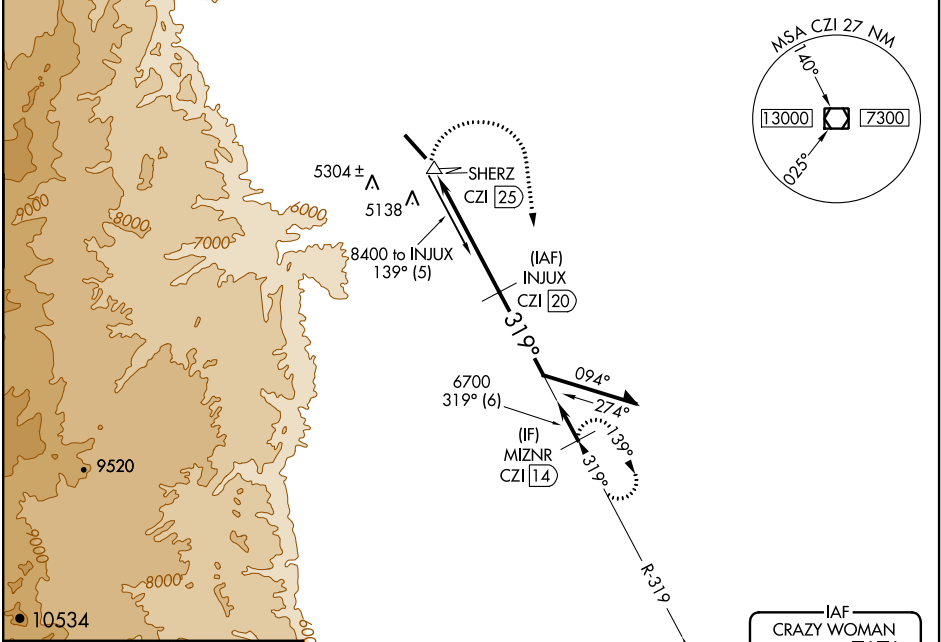
JOHNSON COUNTY (BYG)

VOR/DME CZI 117.3 Chan 120	APP CRS 319°	Rwy Idg 6143 TDZE 4937 Apt Elev 4968
--	------------------------	---

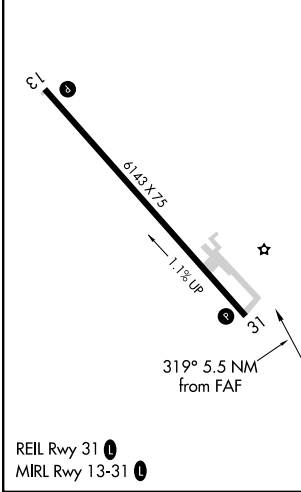
▼ Visibility reduction by helicopters NA. If local altimeter setting not received, use Sheridan altimeter setting and increase all MDAs 600 feet. When VGSI inoperative, procedure NA at night.

▲ MISSED APPROACH: Climbing right turn to 7600 via heading 160° and CZI VOR/DME R-319 to MIZNR/14 DME and hold.

ASOS 135.425	CASPER RADIO 122.025	UNICOM 122.8 (CTAF) 0
------------------------	--------------------------------	---------------------------------

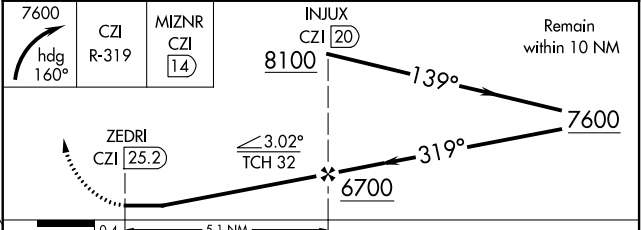


ELEV 4968	TDZE 4937
-----------	-----------



Procedure NA for arrivals at CZI VOR/DME via V247 southbound.

IAF CRAZY WOMAN 117.3 CZI Chan 120



CATEGORY	A	B	C	D
S-31	5680-1 743 (800-1)	5680-1¼ 743 (800-1¼)	5680-2¼ 743 (800-2¼)	5680-2½ 743 (800-2½)
CIRCLING	5680-1 712 (800-1)	5680-1¼ 712 (800-1¼)	5680-2¼ 712 (800-2¼)	5680-2½ 712 (800-2½)

BUFFALO, WYOMING
Amdt 6 13290

44°23'N-106°43'W

VOR/DME RWY 31

NW-1, 26 JUN 2014 to 24 JUL 2014

NW-1, 26 JUN 2014 to 24 JUL 2014