

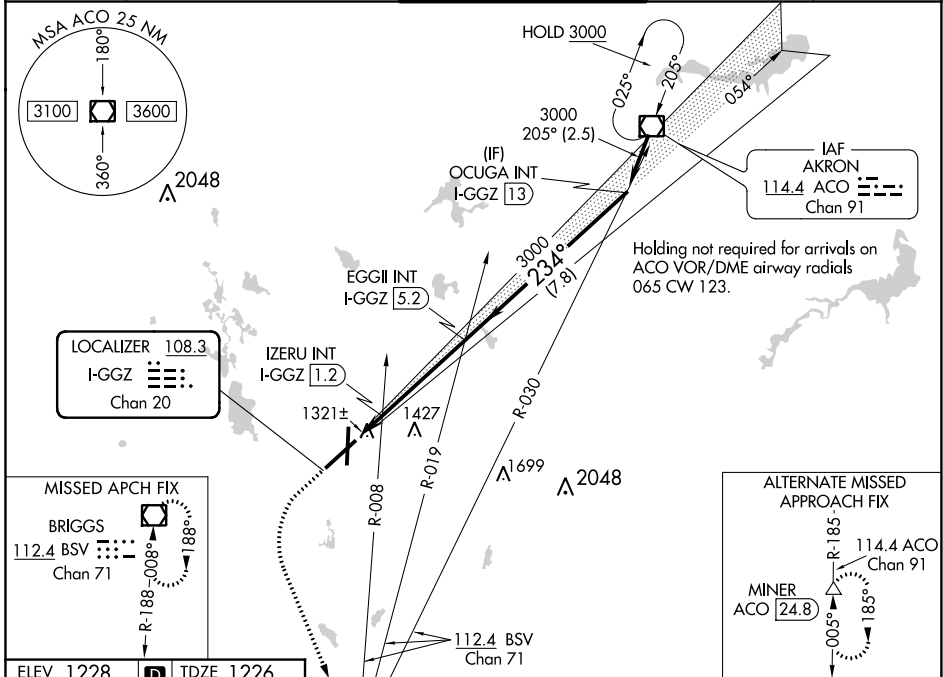
LOC/DME I-GGZ 108.3 Chan 20	APP CRS 234°	Rwy Idg TDZE Apt Elev	8204 1226 1228
--	------------------------	-----------------------------	---

ILS or LOC RWY 23

AKRON-CANTON RGNL (CAK)

MALSR MISSED APPROACH: Climb to 2500 then climbing left turn to 3000 direct BSV VOR/DME and hold.

ATIS 121.05	CLEVELAND APP CON * 125.5 269.25	AKRON-CANTON TOWER 134.75 279.575	GND CON 121.7 348.6	CLNC DEL 132.05
-----------------------	--	---	-------------------------------	---------------------------

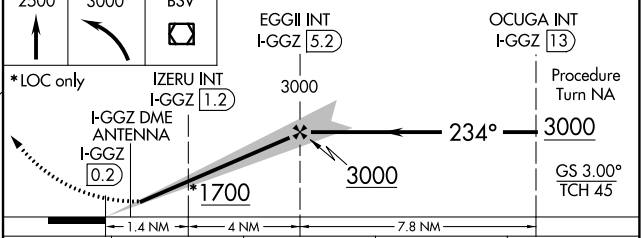
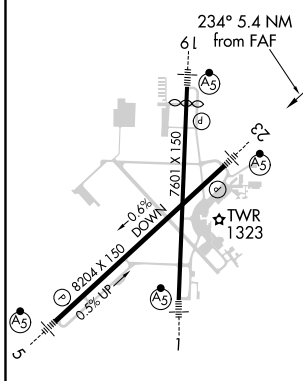


LOCALIZER 108.3
I-GGZ
Chan 20

MISSED APCH FIX
BRIGGS 112.4 BSV Chan 71
R-188-008°

ALTERNATE MISSED APPROACH FIX
MINER ACO 114.4 ACO Chan 91
R-185
R-005°

ELEV 1228	D	TDZE 1226
-----------	----------	-----------



CATEGORY	A	B	C	D
S-ILS 23	**1426/24 200 (200-½)			
S-LOC 23	1700/24	474 (500-½)	1700/50 474 (500-1)	
CIRCLING	1760-1	532 (600-1)	1760-1½ 532 (600-1½)	1780-2 552 (600-2)
IZERU FIX MINIMUMS				
S-LOC 23	1580/24 354 (400-½)		1580/40 354 (400-¾)	
CIRCLING	1760-1	532 (600-1)	1760-1½ 532 (600-1½)	1780-2 552 (600-2)

HIRL Rwys 1-19 and 5-23

FAF to MAP 5.4 NM

Knots	60	90	120	150	180
Min:Sec	5:24	3:36	2:42	2:10	1:48

EC-2, 25 FEB 2021 to 25 MAR 2021

EC-2, 25 FEB 2021 to 25 MAR 2021