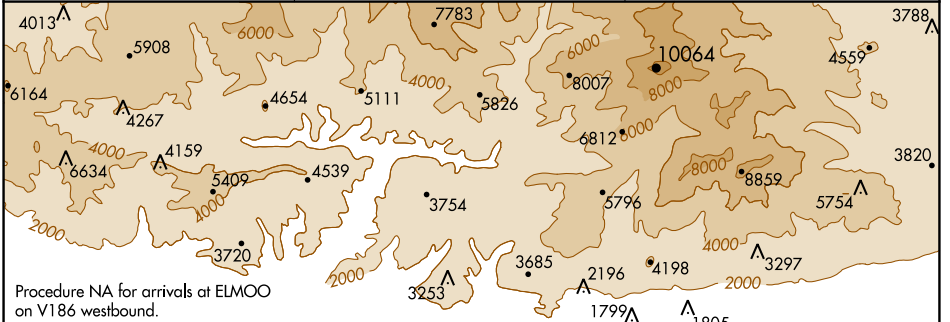


WAAS CH <b>45934</b> <b>W06A</b>	APP CRS <b>054°</b>	Rwy Idg TDZE Apt Elev	<b>3757</b> <b>1430</b> <b>1444</b>
--	------------------------	-----------------------------	---

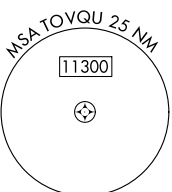
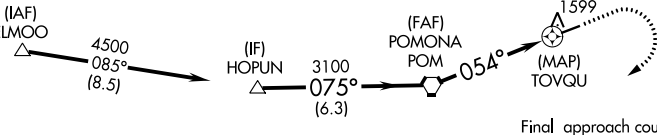
# RNAV (GPS) RWY 6

CABLE (CCB)

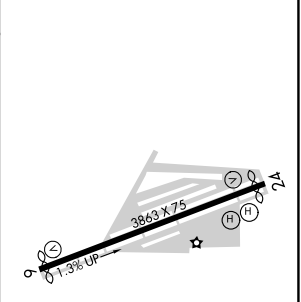
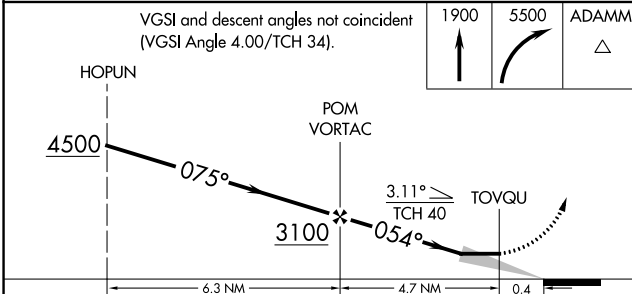
RNP APCH.		MISSED APPROACH: Climb to 1900 then climbing right turn to 5500 direct ADAMM and hold, continue climb-in-hold to 5500.
AWOS-3P <b>119.525</b>	SOCAL APP CON <b>125.5 349.0</b>	UNICOM <b>123.0</b> (CTAF) <b>1</b>



Procedure NA for arrivals at ELMOO on V186 westbound.



ELEV 1444	TDZE 1430
-----------	-----------



CATEGORY	A	B	C	D
LP MDA	1780-1	350 (400-1)	1780-1½ 350 (400-1½)	NA
LNAV MDA	1940-1	510 (500-1)	1940-1½ 510 (500-1½)	NA
CIRCLING	2020-1	576 (600-1)	2140-2 696 (700-2)	NA

MIRL Rwy 6-24 **1**

SW-3, 25 FEB 2021 to 25 MAR 2021

SW-3, 25 FEB 2021 to 25 MAR 2021